



© Lana Grossa GmbH

Design 22 – Classici 27

---

**PULLOVER**  
**ALTA MODA CASHMERE 16**



# PULLOVER ·

## ALTA MODA CASHMERE 16

### Design 22 – Classici 27



**Size** 36/38 (40/42, 44)

Instructions are given for first size. Figures in parenthesis refer to larger sizes. When only one figure is given, it applies to all sizes.

**Materials:** 750 (800, 850) g of Lana Grossa **Alta Moda Cashmere 16** (78% Merino wool, 12% cashmere, 10% polyamide; 110 m/50 g) in Nut Brown (**col 64**). Size 6 mm needles; 2 cable needles [cn].

**Rib patt:** K1, p1.

**Half-brioche rib:** Multiple of 2 + 1. Work according to chart 1. Numbers at right edge of chart indicate RS rows, numbers at left edge of chart indicate WS rows. Work rows 1 – 4 once, then rep rows 3 and 4. **Note:** 1 stitch and 1 yo are treated as 1 stitch.

**17-st cable:** Work according to chart 2. Number at right edge of chart indicates RS row, number at left edge of chart indicates WS row. Work rows 3 and 4 once.

**Selvage sts:** On every row: Knit first and last st.

**Slip stitch selvage:** On every row: Ktbl first st, sl last st pwise wyif.

**Full-fashion dbl decrease:** At beg of RS row, sl st selvage, ptog slipped st with its yo, k1] 2 times, ptog slipped st with its yo, sk2p); at end of RS row, work to last 9 sts, k3tog, [ptog slipped st with its yo, k1] 2 times, ptog slipped st with its yo, sl st selvage.

**Gauge:** 16 sts and 32 rows = 10 x 10 cm in half-brioche rib on size 6 mm needles.

**Back:** With size 6 mm needles cast on 103 (107, 111) sts. Next row (WS): Selvage st, \* k1, p1; rep from \* to last 2 sts, k1, selvage st. Work in rib patt as set by last row until piece meas 5 cm from cast-on, ending with a WS row. Maintaining selvage sts [not shown on chart], work chart 1 until piece meas 55 (56, 57) cm from cast-on, ending with a WS row.

Shape shoulders and neck: At each shoulder edge bind off 4 sts 4 times, 5 sts 4 times (4 sts 2 times, 5 sts 6 times / 5 sts 8 times). At same time, when piece meas 3 cm from beg of shoulder shaping, shape neck as foll: Next row (RS): Bind off center 21 sts. Working each side separately, bind off 3 sts at each neck edge 1 time, 2 sts 1 time. No sts rem.

**Front:** Work same as back until piece meas 34 (35, 36) cm from cast-on, ending with a WS row. Divide for V-neck: Next row (RS): Patt over first 50 (52, 54) sts, sl 1 st to cn and hold in front of work, k2tog, sl st from cn to left needle and turn, leaving rem 51 (53, 55) sts on hold. Left front: Working full-fashion dbl dec, dec 2 st at neck edge on next RS row, then every 12th row 3 times and when same length as back to shoulder, shape shoulder at right edge same as for back = 7 sts rem for neckband. Cast on 1 st at right edge of neckband (work as selvage st throughout) = 8 sts for neckband and cont in patt for 10 cm. Bind off all sts. Right front: Return 51 (53, 55) held sts to needle and with RS facing rejoin yarn. Complete as given for left front, reversing all shaping.

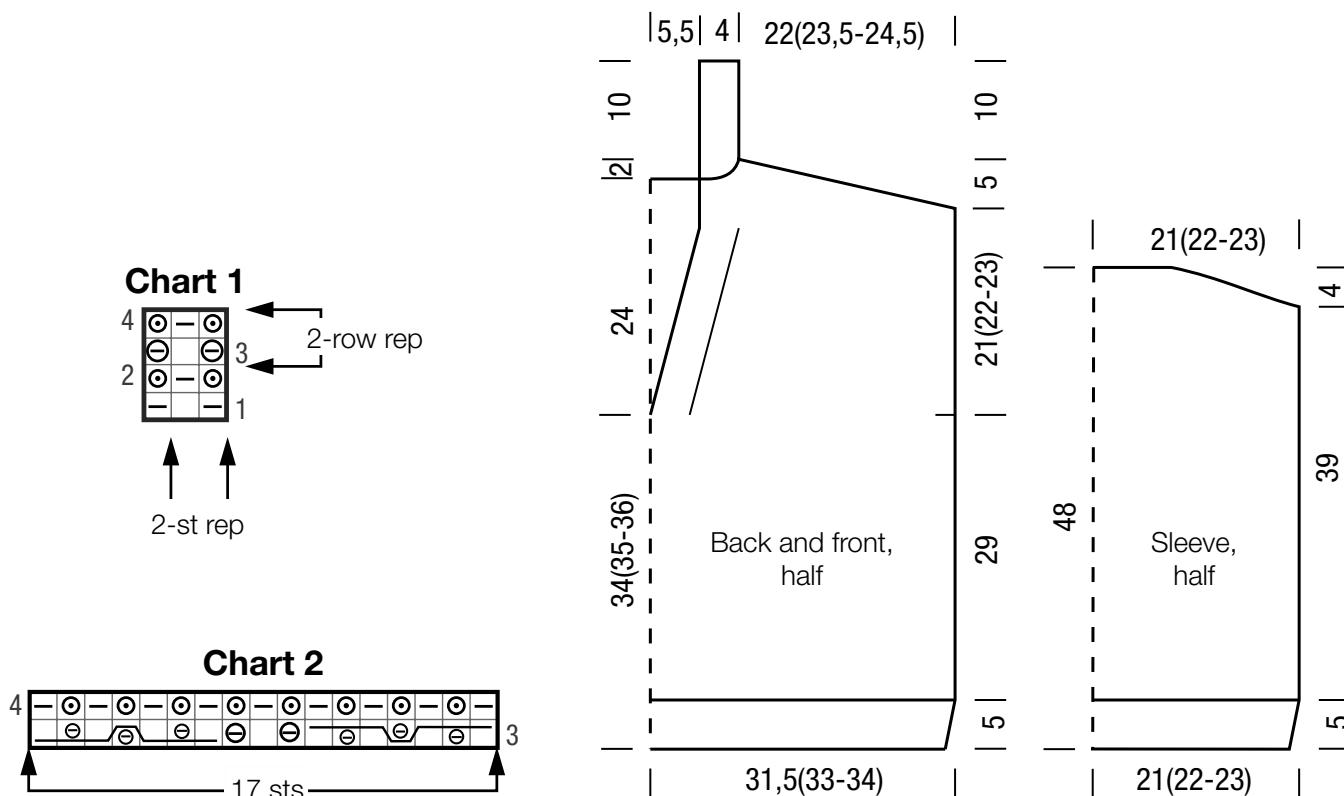
**Sleeves:** With size 6 mm needles cast on 69 (73, 77) sts. Next row (WS): Selvage st, \* k1, p1; rep from \* to last 2 sts, k1, selvage st. Work in rib patt as set by last row until piece meas 5 cm from cast-on, ending with a WS row. Maintaining selvage sts [not shown on chart], work chart 1 for 20 rows, ending with a WS row. \* Next row (RS): Patt over first 26 (28, 30) sts, work row 3 of chart 2 over next 17 sts, patt to end. Next row (WS): Patt over first 26 (28, 30) sts, work row 4 of chart 2 over next 17 sts, patt to end. Work chart 1 for 40 rows, ending with a WS row. Rep from \* once more. Next 2 rows: Work rows 3 and 4 of chart 2 over center 17 sts as before. Work chart 1 across all sts until piece meas 44 cm from cast-on, ending with a WS row. Shape sleeve cap: Bind off 4 sts at beg of next 10 rows, 5 sts at beg of next 2 rows. Bind off rem 19 (23, 27) sts.

**Finishing:** Pin pieces to measurements and block. Sew shoulder seams. Sew bound-off edges of neckbands tog, then sew neckband to back neck. Place markers 21 (22, 23) cm down from shoulders on front and back. Sew on sleeves between markers. Sew side and sleeve seams.

# PULLOVER ·

## ALTA MODA CASHMERE 16

### Design 22 – Classici 27



#### Chart key:

- = k1
- = p1
- = make a yo, then sl next st pwise
- = ptog slipped st with its yo



= sl 3 sts to first cn and hold in back of work, sl 1 st to 2nd cn and hold in back of work, work 3 sts in half-brioche rib, ptog slipped st with its yo from 2nd cn, work 3 sts in half-brioche rib from first cn

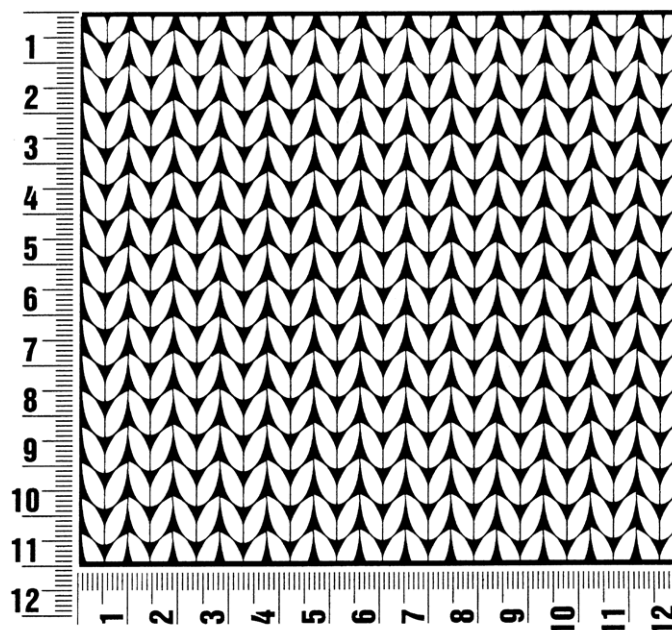


= sl 3 sts to first cn and hold in front of work, sl 1 st to 2nd cn and hold in front of work, work 3 sts in half-brioche rib, ptog slipped st with its yo from 2nd cn, work 3 sts in half-brioche rib from first cn

## Gauge Swatch

### Before you begin ...

...make a gauge swatch. Use the recommended needles, yarns and pattern stitch for your gauge swatch. It should measure approx. 12 cm x 12 cm. Cast-on and bind-off rows, as well as selvedge stitches should not be included in the measurement. Pin your swatch and block it as you would the finished pieces of the garment. Count stitches and rows over 10 cm. If your gauge swatch is too small, switch to larger needles. If your gauge swatch is too big, switch to smaller needles.



## Abbreviations

**beg** = begin(ning) · **ch** = chain · **cont** = continue · **dec** = decreas(e)(ing) · **inc** = increas(e)(ing) · **k** = knit · **kwise** = as if to knit  
**meas** = measures · **M1L** = lift strand between sts from front to back and knit this strand through the back loop · **M1R** = lift strand between sts from the back and knit this strand through the front loop · **patt** = pattern · **pm** = place marker · **p** = purl  
**pwise** = as if to purl · **rem** = remain(ing) · **rep** = repeat(s) · **rev St st** = reverse stockinette stitch · **rnd(s)** = round(s) · **RS** = right side · **sc** = single crochet · **skp** = slip 1 stitch as if to knit, knit 1 stitch, pass slipped stitch over knitted stitch · **sk2p** = slip 1 stitch as if to knit, knit 2 together, pass slipped stitch over knitted stitch · **s2kp** = slip 2 stitches as if to knit, k 1 stitch, pass slipped stitches over knitted stitch · **sl** = slip · **st(s)** = stitch(es) · **St st** = stockinette stitch · **tbl** = through the back loop · **tog** = together · **wyib** = with yarn in back of work · **wyif** = with yarn in front of work · **WS** = wrong side · **yo(s)** = yarn over(s)

### Publisher's Info

**Publisher:** Lana Grossa GmbH, Gaimersheim, [www.lana-grossa.com](http://www.lana-grossa.com)

**Photographer:** Susan Buth