



© Lana Grossa GmbH

Design 1 – natural KNITS 01

CROCHET PULLOVER ECOPUNO

CROCHET PULLOVER · ECOPUNO

Design 1 – natural KNITS 01



Size 36 – 40 (42 – 46)

Instructions are given for smaller size. Figure in parenthesis refers to larger size. When only one figure is given, it applies to both sizes.

Materials: 350 (400) g of Lana Grossa **Ecopuno** (72% cotton, 17% Merino wool, 11% baby alpaca; 215 m/50 g) in Sand Beige (**col 64**). Size 4 mm crochet hook; size 3.5 mm needles.

Main patt: Work according to chart A. Multiple of 6 + 2 + 1 t-ch (does not count as sc). Numbers at right and left edge of chart indicate rows. Work first sc on first row in 2nd ch from hook. Work to patt rep, work sts between arrows for patt rep, work to end of chart. Work sc on rows 2, 4, 6 and 8 into ch-sp on row below. Thin lines on chart show direction of work.

Work rows 1 – 8 once, rep rows 5 – 8, end with row a.

Neck shaping: Work according to chart B.

Two-stitch selvage: At beg of row, k1, sl 1 pwise wyif. At end of row, k1, sl 1 pwise wyif.

Rib patt: K1, p1.

Gauge: 4 patt reps and 10 rows = 10 x 10 cm in main patt with size 4 mm hook, measured after blocking.

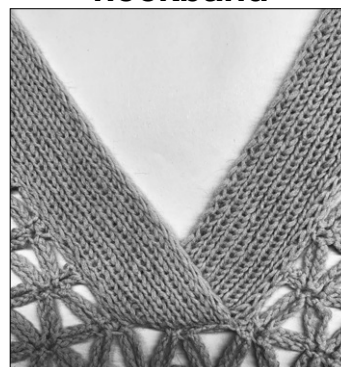
Note: Pullover is worked in one piece starting with front and sleeves. The back is then worked down to the lower edge.

Front and sleeves: Using size 4 mm hook ch 122 (134) + 1 t-ch = 20 (22) patt reps. Work chart A for 36 rows, ending with a chart row 8 and piece meas 36 cm from beg. Ch 84 + 1 t-ch at end of row 36 for left sleeve, turn. Next row: Work chart row 5 to center 2 patt reps, working 14 patt reps over the chain and 23 (24) patt reps total. Turn and work **left front and left sleeve** first. Cont in patt for 19 rows, ending with a chart row 8 and sleeve meas 20 cm. Place marker in last row to indicate shoulder line. Cont in patt for 14 rows, ending with a chart row 6 and piece meas 14 cm from shoulder marker.

Put work aside, do not fasten off. **Right front and right sleeve:** With RS facing, join yarn with a sl st to left edge of right front, ch 85 for sleeve and fasten off. With RS facing and leaving center 2 patt reps unworked, join yarn with a sl st in sc at neck edge [see chart B]. Work chart row 5 over right front and chain = 23 (24) patt reps. Complete as given for left front, ending with a chart row 6. Ch 10 at end of row for back neck edge and with WS facing, sl st in row end of row 6 of left front. Fasten off. **Back:** Resume work on left front and sleeve. Work chart row 7 across all sts and in each ch = 48 (50) patt reps. Cont in patt across all sts for 5 more rows, ending with a chart row 8. Shape sleeves: Work chart row 5, leaving 14 patt reps unworked at beg and end of row. Cont in patt over rem 20 (22) patt reps for 35 rows, ending with a chart row 8. Work chart row a. Fasten off.

Finishing: Pin piece to measurements and block. With right side tog, join side and sleeve seams: Join yarn with a sl st to bottom edge of front and back. * Ch 4, sl st in „junction“ where loops meet; rep from * to end. **Neckband:** Make 2. With size 3.5 mm needles cast on 17 sts. Working a two-stitch selvage at each edge, work in rib patt for 38 cm. Bind off all sts in patt. Sew bands to neck edge, with right band overlapping left band at bottom of front neck [see photo].

**Overlapped
neckband**



CROCHET PULLOVER · ECOPUNO

Design 1 – natural KNITS 01

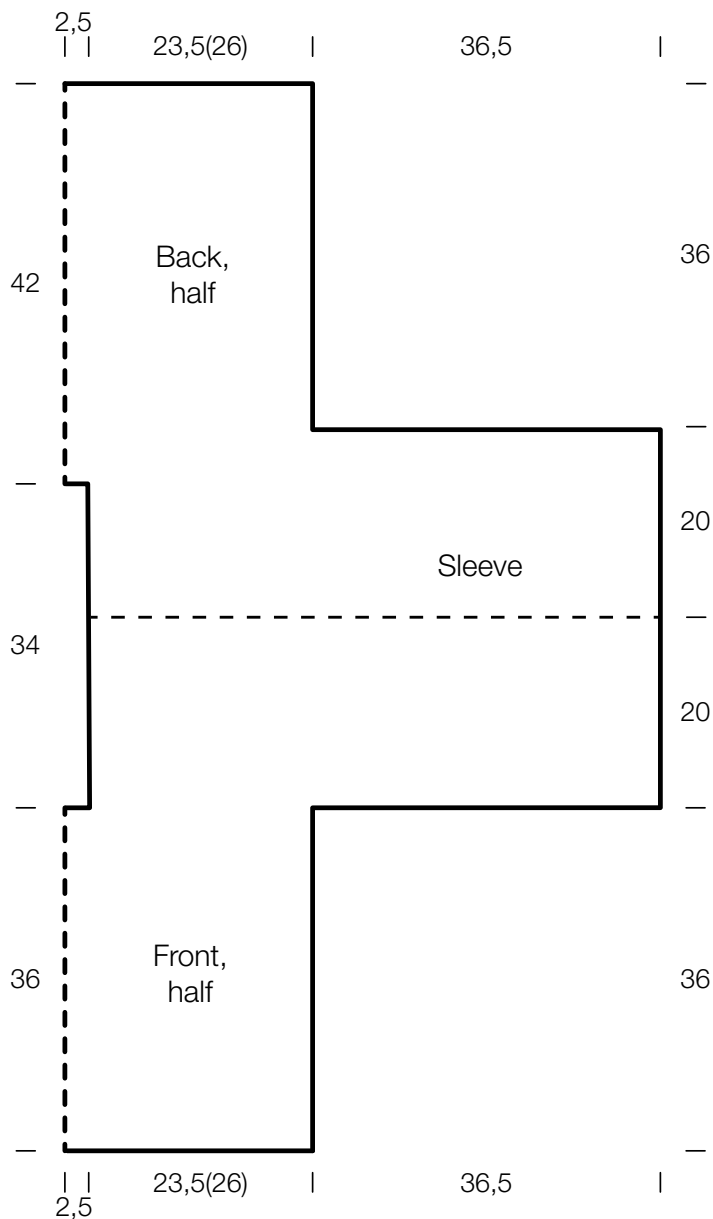


Chart A

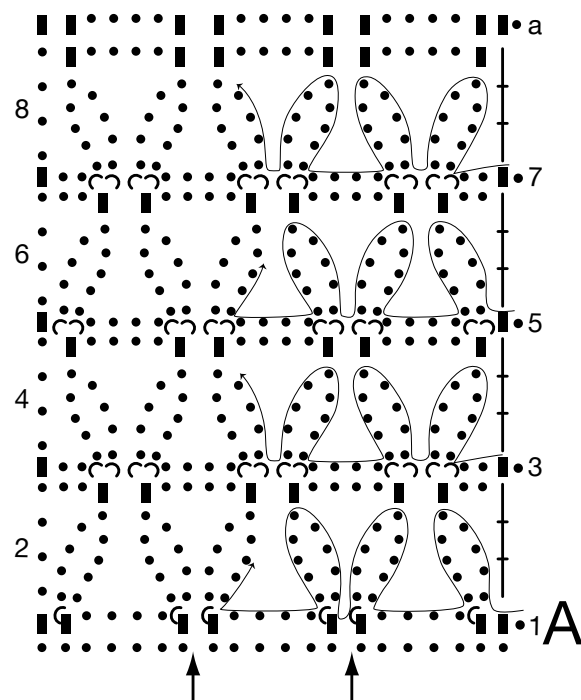
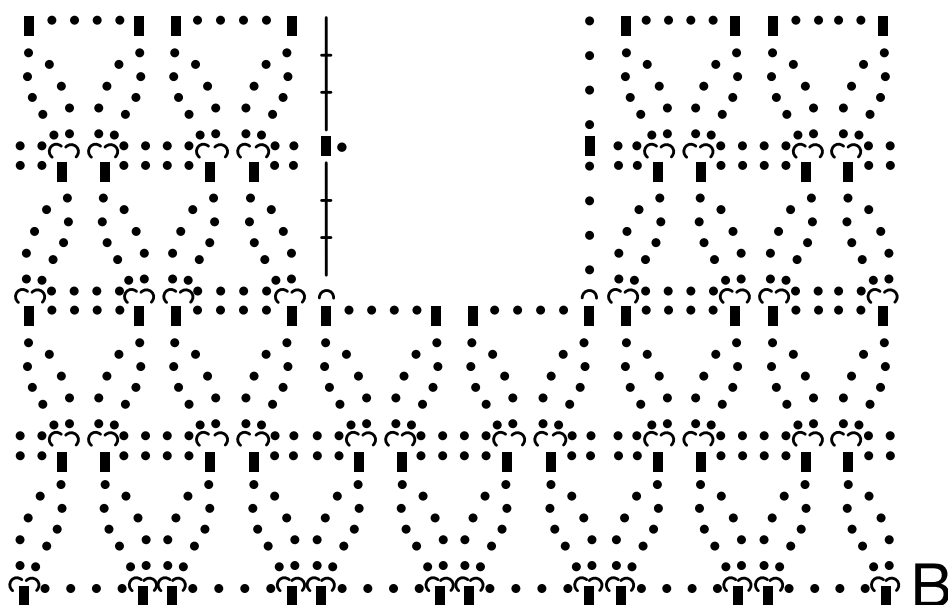


Chart key:

- = chain (ch)
- ⤿ = slip stitch (sl st)
- = single crochet (sc)
- ⋈ = treble crochet (tr)

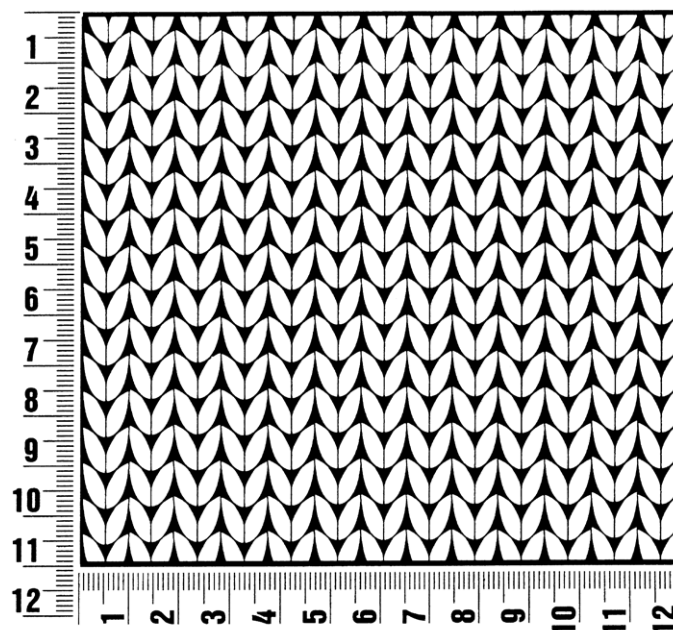
Chart B



Gauge Swatch

Before you begin ...

...make a gauge swatch. Use the recommended needles, yarns and pattern stitch for your gauge swatch. It should measure approx. 12 cm x 12 cm. Cast-on and bind-off rows, as well as selvedge stitches should not be included in the measurement. Pin your swatch and block it as you would the finished pieces of the garment. Count stitches and rows over 10 cm. If your gauge swatch is too small, switch to larger needles. If your gauge swatch is too big, switch to smaller needles.



Abbreviations

beg = begin(ning) · **ch** = chain · **cont** = continue · **dec** = decreas(e)(ing) · **inc** = increas(e)(ing) · **k** = knit · **kwise** = as if to knit
meas = measures · **M1L** = lift strand between sts from front to back and knit this strand through the back loop · **M1R** = lift strand between sts from the back and knit this strand through the front loop · **patt** = pattern · **pm** = place marker · **p** = purl
pwise = as if to purl · **rem** = remain(ing) · **rep** = repeat(s) · **rev St st** = reverse stockinette stitch · **rnd(s)** = round(s) · **RS** = right side · **sc** = single crochet · **skp** = slip 1 stitch as if to knit, knit 1 stitch, pass slipped stitch over knitted stitch · **sk2p** = slip 1 stitch as if to knit, knit 2 together, pass slipped stitch over knitted stitch · **s2kp** = slip 2 stitches as if to knit, k 1 stitch, pass slipped stitches over knitted stitch · **sl** = slip · **st(s)** = stitch(es) · **St st** = stockinette stitch · **tbl** = through the back loop · **tog** = together · **wyib** = with yarn in back of work · **wyif** = with yarn in front of work · **WS** = wrong side · **yo(s)** = yarn over(s)

Publisher's Info

Publisher: Lana Grossa GmbH, Gaimersheim, www.lana-grossa.com

Photographer: Theresa Rudzki, www.theresarudzki.com