



© Lana Grossa GmbH

Design 18 – natural KNITS 01

SHIRT ECOPUNO

SHIRT · ECOPUNO

Design 18 – natural KNITS 01



Size 36 – 40 (42/44)

Instructions are given for smaller size. Figure in parenthesis refers to larger size. When only one figure is given, it applies to both sizes.

Materials: **200 (250) g** of Lana Grossa **Ecopuno** (72% cotton, 17% Merino wool, 11% baby alpaca; 215 m/50 g) in Pearl Beige (**col 66**); **50 g each** in Gentian Blue (**col 213**), Pastel Blue (**col 207**) and Light Blue (**col 13**). Size 4 mm needles; size 4 mm circular needles, 40 and 80 cm long; size 3.5 mm circular needles, 40 and 80 cm long.

Notes: The shirt is worked seamlessly from the top down. First, stitches for the back are cast on and the shoulders are shaped with increases. The back is then worked down to the underarm and stitches are put on hold. Next, stitches are picked up along the back shoulders for the left and right side of the front. Neck shaping is worked next, then each side of the front are joined and worked down to the underarm same as for the back. Front and back are then joined and worked in the round down to the bottom. Stitches for the sleeves are picked up along each armhole edge and the sleeve cap is shaped with short-rows. Sleeves are then worked in the round.

Selvage stitches: On every row: Sl first st kwise, k last st.

Rib patt: K1, p1.

St st in rows: K on RS, p on WS.

St st in rnds: K every rnd.

Seed stitch: Row/rnd 1: K1, p1. Row/rnd 2: Purl the knit sts and knit the purl sts. Rep row/rnd 2 for seed st.

Main patt: Work 12 rows/rnds in seed st in col 207; 18 rows/rnds in St st in Pearl Beige; 12 rows/rnds in seed st in col 13; 18 rows/rnds in St st in Pearl Beige; 12 rows/rnds in seed st in col 207; 18 rows/rnds in St st in Pearl Beige; 12 rows/rnds in seed st in col 213; 18 rows/rnds in St st in Pearl Beige [see also schematic].

Full-fashion increase: On RS row: M1R, 3 sts in from each edge. On WS row: M1L, 3 sts in from each edge.

Short-rows: Always turn with a yo at end of row. Work each yo tog with the next st as k2tog on RS rows, p2tog on WS rows.

Gauge: 21 sts and 30 rows/rnds = 10 x 10 cm in main patt on size 4 mm needles.

Back: With size 4 mm needles and Pearl Beige cast on 48 sts. Knit 1 WS row. Working first and last st as selvage sts, work in St st and shape shoulders: Working full-fashion inc, inc 1 st at each end of next 29 (33) rows = 106 (114) sts. Work even in St st for 7 rows = 2 cm. Work in main patt for 42 rows = 14 cm, ending with a WS row and col 13. Place sts on holder, cut yarn.

Left front: With size 4 mm needles, Pearl Beige and RS facing, pick up and k 29 (33) sts along left shoulder of back. Beg and end with a WS row and working first and last st as selvage sts, work in St st for 9 rows. Shape neck: Working full-fashion inc, inc 1 st at beg of next 10 RS rows = 39 (43) sts. Work 1 WS row. Place sts on holder, cut yarn.

Right front: With size 4 mm needles, Pearl Beige and RS facing, pick up and k 29 (33) sts along right shoulder of back. Beg and end with a WS row and working first and last st as selvage sts, work in St st for 9 rows. Shape neck: Working full-fashion inc, inc 1 st at end of next 10 RS rows = 39 (43) sts. Work 1 WS row. Leave sts on needle, do not cut yarn. Next row (RS): Work in St st across 39 (43) right front sts, cast on 28 sts, work in St st across 39 (43) held left front sts = 106 (114) sts. Work in St st across all sts for 5 rows, ending with a WS row. Work in main patt for 42 rows = 14 cm, ending with a WS row and col 13.

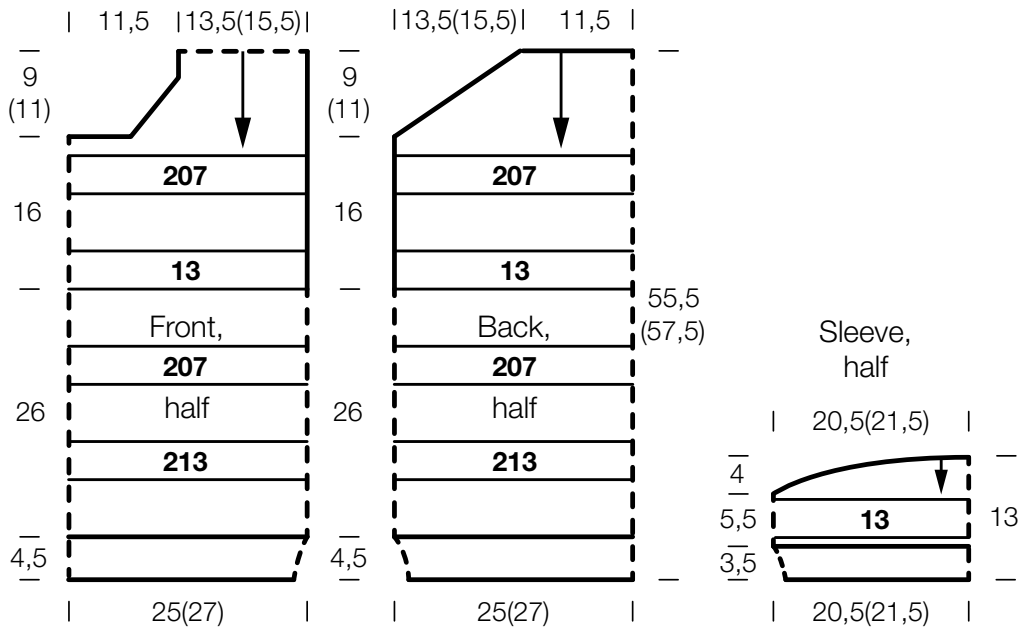
Join front and back: **Note:** Main patt continues now with 18 rnds in St st in Pearl Beige. Using longer size 4 mm circular needle and Pearl Beige, work in St st across 106 (114) front sts and 106 (114) held back sts = 212 (228) sts for body. Join for working in rnds, work to end of main patt and body meas 26 cm. Change to longer size 3.5 mm circular needle. Work in rib patt for 16 rnds = 4.5 cm. Bind off all sts in rib.

Sleeves: Worked from the top down. With shorter size 4 mm circular needle, Pearl Beige, RS facing and beg at center of underarm, pick up and k 86 (90) sts evenly along armhole edge. Working first and last st as selvage sts, work in St st and shape sleeve cap with short-rows: **Short-row 1 (WS):** P53 (56), turn. **Short-row 2 (RS):** Yo, k20 (22), turn. **Short-row 3 (WS):** Yo, p57 (60), turn. **Short-row 4 (RS):** Yo, k28 (30), turn. Cont working short-rows in this manner, working 4 additional sts at end of next 5 WS and RS rows. Work to end of row, then join for working in rnds and cont in St st for 6 rnds. Using col 13, work in seed st for 12 rnds = 4 cm. Using Pearl Beige, work in St st for 4 rnds. Change to shorter size 3.5 mm circular needle. Work in rib patt for 12 rnds = 3.5 cm. Bind off all sts in rib.

Finishing: Pin piece to measurements and block. **Neckband:** With shorter size 3.5 mm circular needle and Pearl Beige, pick up and k 116 sts evenly around neck edge. Place beg of rnd marker and join for working in rnds. Work in rib patt for 3 cm. Bind off all sts in rib. Note that shoulder line is moved slightly to the back.

SHIRT · ECOPUNO

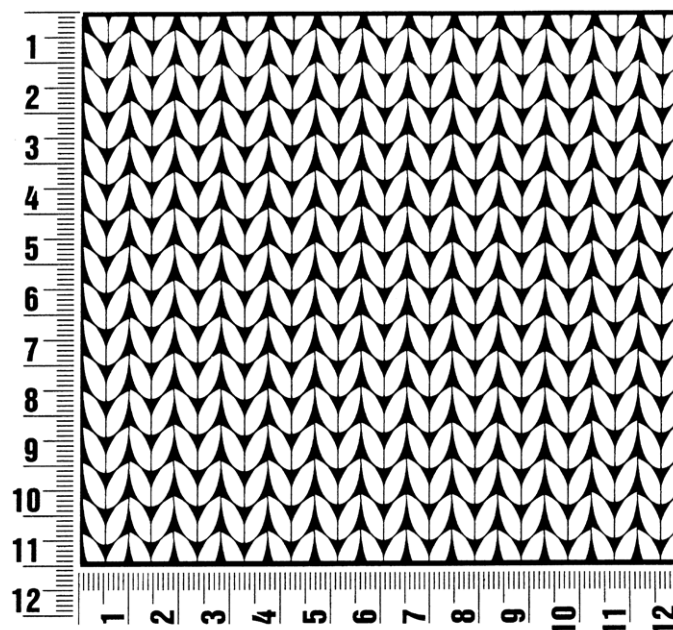
Design 18 – natural KNITS 01



Gauge Swatch

Before you begin ...

...make a gauge swatch. Use the recommended needles, yarns and pattern stitch for your gauge swatch. It should measure approx. 12 cm x 12 cm. Cast-on and bind-off rows, as well as selvedge stitches should not be included in the measurement. Pin your swatch and block it as you would the finished pieces of the garment. Count stitches and rows over 10 cm. If your gauge swatch is too small, switch to larger needles. If your gauge swatch is too big, switch to smaller needles.



Abbreviations

beg = begin(ning) · **ch** = chain · **cont** = continue · **dec** = decreas(e)(ing) · **inc** = increas(e)(ing) · **k** = knit · **kwise** = as if to knit
meas = measures · **M1L** = lift strand between sts from front to back and knit this strand through the back loop · **M1R** = lift strand between sts from the back and knit this strand through the front loop · **patt** = pattern · **pm** = place marker · **p** = purl
pwise = as if to purl · **rem** = remain(ing) · **rep** = repeat(s) · **rev St st** = reverse stockinette stitch · **rnd(s)** = round(s) · **RS** = right side · **sc** = single crochet · **skp** = slip 1 stitch as if to knit, knit 1 stitch, pass slipped stitch over knitted stitch · **sk2p** = slip 1 stitch as if to knit, knit 2 together, pass slipped stitch over knitted stitch · **s2kp** = slip 2 stitches as if to knit, k 1 stitch, pass slipped stitches over knitted stitch · **sl** = slip · **st(s)** = stitch(es) · **St st** = stockinette stitch · **tbl** = through the back loop · **tog** = together · **wyib** = with yarn in back of work · **wyif** = with yarn in front of work · **WS** = wrong side · **yo(s)** = yarn over(s)

Publisher's Info

Publisher: Lana Grossa GmbH, Gaimersheim, www.lana-grossa.com

Photographer: Theresa Rudzki, www.theresarudzki.com