

CLASSICI NO. 28

FILATI

Design 2

PULLOVER



## PULLOVER

Size 36/38, 40/42, 44/46 und 48

The information for size 40/42, 44/46 and 48 is in brackets. If only one information is given, it applies to all sizes.

Material: Lana Grossa Cotton Wool (53% virgin wool (extra-fine Merino), 47% cotton, running length 195 m/50 g), 500 (550 – 600 – 650) g, cream (color 12); size 4, 4.5, and 5 knitting needles and 1 size 4 circular knitting needle, 40 cm long.

ATTENTION: Always work with double threads!

Stockinette stitch: RS k, WS p

Lace pattern: Number of stitches divisible by 13 + selv sts. See chart.

Only RS rows are shown. In WS rows, knit sts as they appear, yo as p. Repeat rows 1-28.

Double cross cast-on: See tip below these instructions.

Selvage sts: On every row: Knit first and last st.

Gauge: St st on size 4.5 needles: 19 sts and 26 rows = 10 x 10 cm. Lace pattern on size 5 needles: 20 sts and 26 rows = 10 x 10 cm.

Back: Cast on 119 (127 – 132 – 145) sts with size 4 needles, double stranded, using the double cross cast-on. Work in St st and selv st on size 4.5 needles. After 8 (10 – 8 – 10) cm, continue in lace pattern with size 5 needles: selv st, 0 (4 – 0 – 0) sts in St st, repeat the pattern 9 (9 – 10 – 11) times according to chart, 0 (4 – 0 – 0) sts in St st, selv st.

When the piece measures 31 (32 – 33 – 34) cm, mark the beginning of the armholes on both sides. When the piece measures 50 (52 – 54 – 56) cm, cast off all sts.

Front: Work basically the same as the back.

At a total height of 46 (48 – 50 – 52) cm, worked in lace pattern: 3 x rows 1st – 28th and 1 x rows 1st – 14th (3 x rows 1st – 28th and 1 x rows 1st – 14th – 4 x rows 1st – 28th – 4 x rows 1st – 28th). For the neckline, cast off the middle 39 (39 – 40 – 41) sts and finish both necklines separately.

At a total height of 50 (52 – 54 – 56) cm, cast off the remaining 40 (44 – 46 – 52) shoulder sts.

Sleeves: Cast on 57 sts using size 4 needles with double strands and double cross cast-on. Using size 4.5 needles, work in St st and selv st. After 6 cm on the last WS row, inc 10 sts evenly = 67 sts.

Continue working in the lace pattern using size 5 needles: selv st, rep the pattern 5 times according to the chart, selv st.

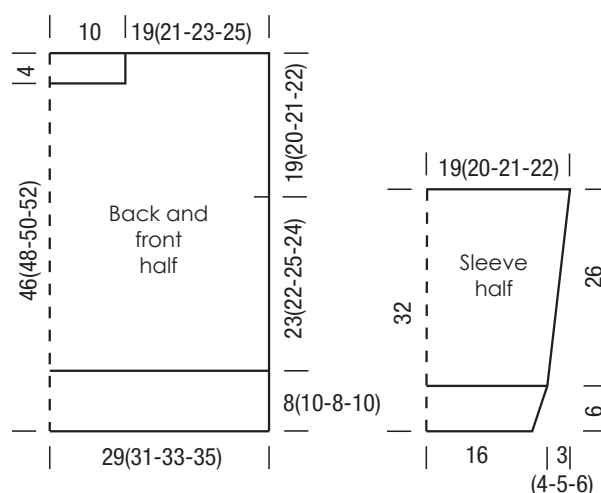
For the sleeve shape, on the 13th (11th – 9th – 7th) row, inc 1 st on both sides once, then alt. in every 10th and 12th row, 4 times 1 st (in the following 10th row, 1 st and in every 8th row, 5 times 1 st – alternately, in every 6th and 8th row, 6 times 1 st and in every 6th row, 2 times 1 st – in every 6th row, 9 times 1 st and in the following 4th row, 1 time 1 st) inc on both sides = 77 (81 – 85 – 89) sts.

Knit the increased sts in St st. When the work measures 32 cm, cast off all sts.

Work 2nd sleeve in the same way.

Finishing: Block the pieces, moisten, and let them dry.

Sew the shoulder seams. For the rolled edge, pick up 90 sts from the neckline with double thread. Using a size 4 circular needle, k in round. After 4 rds, cast off all sts. Sew the sleeves on at 19 (20 – 21 – 22) cm on each side of the shoulder seam. Sew the side and sleeve seams.

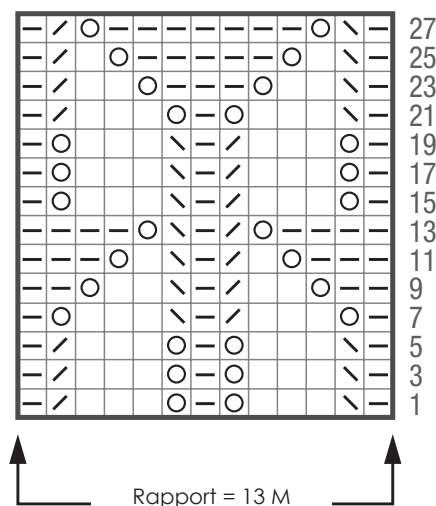


### PULLOVER

Chart

Chart key:

- = k1
- ◻ = p1
- ⊙ = yo
- ⊞ = k2tog
- ⌢ = 1 slip over (= slip 1 kwise, k the next st, then slip the slipped stitch over)



## GAUGE SWATCH

Before you begin knitting...

...make a gauge swatch. Use the recommended needles, yarns and pattern stitch for your gauge swatch. It should measure approx. 12 cm x 12 cm. Cast on and bind off rows, as well as selvage stitches should not be included in the measurement. Pin your swatch and block it as you would the finished pieces of the garment. Count stitches and rows over 10 cm. If your gauge swatch is too small, switch to larger needles. If your gauge swatch is too big, switch to smaller needles.

## ABBREVIATIONS

beg = begin(ning)  
 ch = chain  
 cont = continue  
 dec = decreas(e)(ing)  
 inc = increas(e)(ing)  
 k = knit  
 kwise = as if to knit  
 meas = measures  
 M1L = lift strand between sts from front to back and knit this strand through the back loop

M1R = lift strand between sts from the back and knit this strand through the front loop  
 patt = pattern  
 pm = place marker  
 p = purl  
 pwise = as if to purl  
 rem = remain(ing)  
 rep = repeat(s)  
 rev St st = reverse stockinette stitch  
 rnd(s) = round(s)

RS = right side  
 sc = single crochet  
 skp = slip 1 stitch as if to knit, knit 1 stitch, pass slipped stitch over knitted stitch  
 sk2p = slip 1 stitch as if to knit, knit 2 together, pass slipped stitch over knitted stitch  
 s2kp = slip 2 stitches as if to knit, k 1 stitch, pass slipped stitches over knitted stitch  
 sl = slip

st(s) = stitch(es)  
 St st = stockinette stitch  
 tbl = through the back loop  
 tog = together  
 wyib = with yarn in back of work  
 wyif = with yarn in front of work  
 WS = wrong side  
 yo(s) = yarn over(s)