

FILATI NO. 38

FILATI

Design 38

WRAP IN LACE PATTERN



### WRAP IN LACE PATTERN

Approx. 200 x 72 cm

**Materials:** 75 g of Lana Grossa Silkhair (70% superkid mohair, 30% silk; 210 m/25 g) in Light Turquoise (col 82), 50 g in Light Brown (col 24) and 25 g in Khaki (col 60) and 100 g of Lana Grossa Silkhair Print (70% superkid mohair, 30% silk; 400 m/50 g) in Ice Blue/Lilac/Light Olive/Orange-Red (col 345). Size 5.5 mm needles; size 4.5 mm crochet hook.

**Lace pattern:** Work according to chart. Numbers at right edge of chart indicate RS rows; on WS rows, purl all sts and yos. Beg chart pat with sts before first arrow, work 12 sts between arrows for pat repeat, end with sts after 2nd arrow. Repeat rows 1 – 20 throughout.

**Stripe Sequence:** 60 rows with Silkhair Print, 6 rows with Khaki, 10 rows with Light Turquoise, 40 rows with Light Brown, 40 rows with Silkhair Print, 6 rows with Khaki, 36 rows with Light Turquoise, 44 rows with Silkhair Print, 36 rows with Light Turquoise, 6 rows

with Khaki, 40 rows with Silkhair Print, 40 rows with Light Brown, 10 rows with Light Turquoise, 6 rows with Khaki, 70 rows with Silkhair Print = 450 rows total.

**Gauge:** 16.5 sts and 22.5 rows = 10 x 10 cm in lace pat on size 5.5 mm needles.

**Instructions:** With size 5.5 mm needles and Silkhair Print, very loosely cast on 123 sts. Next WS row: Purl all sts. Next, work in lace pat according to chart, working the 450 rows of the stripe sequence once. Very loosely bind off all sts.

**Finishing:** Pin piece to measurements and block. Make and attach fringe: For each fringe, cut 4 strands of Light Turquoise, each strand 24 cm long. Insert crochet hook into sts from WS, fold 4 strands of yarn in half to form a loop, draw loop through fabric, then draw yarn ends through loop and tighten. Attach 52 fringe each along cast-on and bound-off edge. Trim fringe to 22 cm.

#### Chart key:

⊞ = selvage st

□ = k1

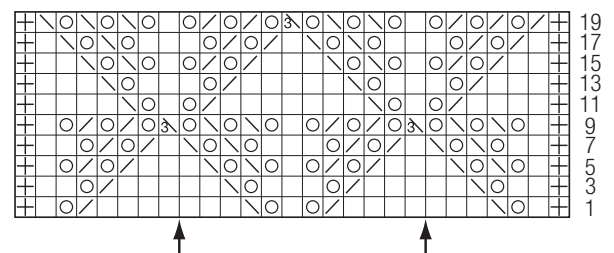
⊗ = yo

⊠ = k2tog

⊞ = SKP: slip 1 st as if to knit, k1, pass slipped st over knitted st

⊞ = SK2P: slip 1 st as if to knit, k2tog, pass slipped st over knitted st

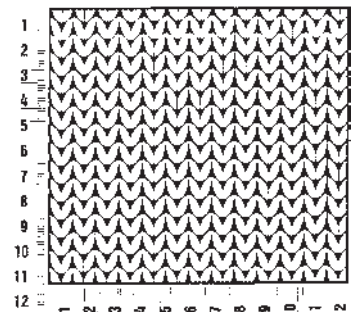
Chart



### GAUGE SWATCH

...make a gauge swatch. Use the recommended needles, yarns and pattern stitch for your gauge swatch. It should measure approx. 12 cm x 12 cm.

Cast on and bind off rows, as well as selvage stitches should not be included in the measurement. Pin your swatch and block it as you would the finished pieces of the garment. Count stitches and rows over 10 cm. If your gauge swatch is too small, switch to larger needles. If your gauge swatch is too big, switch to smaller needles.



### ABBREVIATIONS

**beg** = begin(ning) • **ch** = chain • **cm** = centimeter(s) • **cn** = cable needle  
**cont** = continue • **dc** = double crochet • **dpn** = double-pointed needle • **k** = knit • **k1f&b** = knit into front and back of same stitch  
**m** = meter

**M1L** = lift strand between sts from front to back and k this strand through the back loop • **M1R** = lift strand between sts from the back and k this strand through the front loop • **mm** = millimeter • **p** = purl • **rem** = remaining; remain(s) • **rep** =

repeat • **rnd(s)** = round(s) • **RS** = right side • **sc** = single crochet • **SK2P** = slip 1 stitch, knit 2 together, pass slipped stitch over • **SKP** = slip 1 stitch, knit 1 stitch, pass slipped stitch over •

**S2KP** = slip 2 stitches, k1 stitch, pass slipped stitches over • **sl** = slip • **st (s)** = stitch(es) • **tbl** = through the back loop • **tog** = together • **WS** = wrong side • **yo** = yarnover