

Poncho Pullover



## Poncho Pullover

## ABBREVIATIONS

**beg** = begin(ning) • **ch** = chain • **cont** = continue • **dec** = decrease(s) (ing) • **inc** = increase(s) (ing) • **k** = knit • **kwise** = as if to knit • **meas** = measures • **M1L** = lift strand between sts from front to back and knit this strand through the back loop • **M1R** = lift

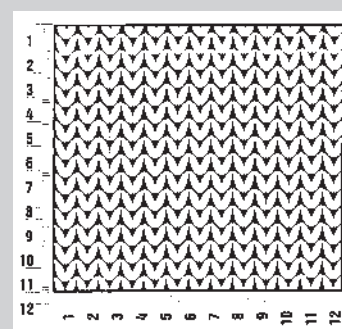
strand between sts from the back and knit this strand through the front loop • **patt** = pattern • **pm** = place marker • **p** = purl • **pwise** = as if to purl • **rem** = remain(ing) • **rep** = repeat(s) • **rev St st** = reverse stockinette stitch • **rnd(s)** = round(s) • **RS** = right side

• **sc** = single crochet • **skp** = slip 1 stitch as if to knit, knit 1 stitch, pass slipped stitch over knitted stitch • **sk2p** = slip 1 stitch as if to knit, knit 2 together, pass slipped stitch over knitted stitch • **s2kp** = slip 2 stitches as if to knit, k 1 stitch, pass slipped

stitches over knitted stitch • **sl** = slip • **sl st** = slip st • **st(s)** = stitch(es) • **St st** = stockinette stitch • **tbl** = through the back loop • **tog** = together • **wyib** = with yarn in back of work • **wyif** = with yarn in front of work • **WS** = wrong side • **yo(s)** = yarn over(s)

## GAUGE SWATCH

Before you begin, make a gauge swatch. Use the recommended needles, yarns and pattern stitch for your gauge swatch. It should measure approx. 12 cm x 12 cm. Cast-on and bind-off rows, as well as selvage stitches should not be included in the measurement. Pin your swatch and block it as you would the finished pieces of the garment. Count stitches and rows over 10 cm. If your gauge swatch is too small, switch to larger needles. If your gauge swatch is too big, switch to smaller needles.



## Poncho Pullover

## Size 36/38 (40/42)

Instructions are given for first size. Figure in parenthesis refers to larger size. When only one figure is given, it applies to both sizes.

**Materials:** 450 (500) g of Lana Grossa **Smokey** (46% Merino wool, 41% cotton, 8% polyamide, 5% yak; 225 m/50 g) in Linen/Beige/Sand (col 206). Size 4.5 and 5.5 mm needles; size 5.5 mm circular needle,

100 cm long; size 4.5 and 5.5 mm circular needles, each 50 cm long; cable needle [cn].

**3-st selvage:** On RS rows, sl first 3 sts pwise wyib, pulling yarn tight and k last 3 sts. On WS rows, sl first 3 sts pwise wyif, pulling yarn tight and p last 3 sts.

**Rib patt:** K1, p1.

**St st:** K on RS, p on WS.

**Chart patt [on page 32]:** Numbers at right edge of chart indicate RS rows; on WS rows, work sts as they appear or

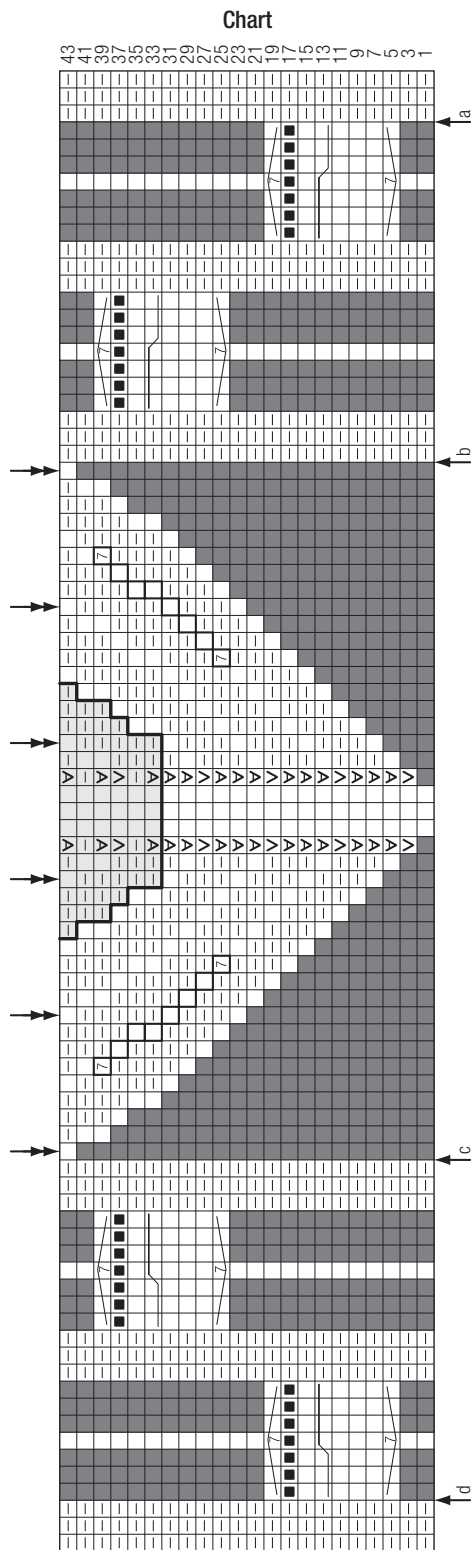
according to chart key. Beg with sts before arrow a, work 8 sts between arrow a and b 3 times, work sts between arrow b and c once, work 8 sts between arrow c and d 3 times, end with sts after arrow d. Position rows as given in instructions.

**Gauge:** 17.5 sts and 29 rows = 10 x 10 cm in chart patt on size 5.5 mm needles.

**Left half of back and front:** Worked side to side beg at left sleeve. Arrow on schematic shows direction of work. With size 4.5 mm needles cast on 38 sts for left sleeve. Work in rib patt for 14 cm, inc 25 sts evenly across last WS row = 63 sts. Change to size 5.5 mm needles. Next RS row: 3-st selvage, work chart patt over next 57 sts, 3-st selvage. Note that center 3 chart sts are at top of overarm/shoulder. Maintaining 3-st selvage at each edge cont to foll chart through chart row 44, working incs on either side of center 3 sts as shown on chart = 19 sts on either side of center 3 sts and 41 sts between arrow b and c after chart row 44. Change to long size 5.5 mm



## Poncho Pullover

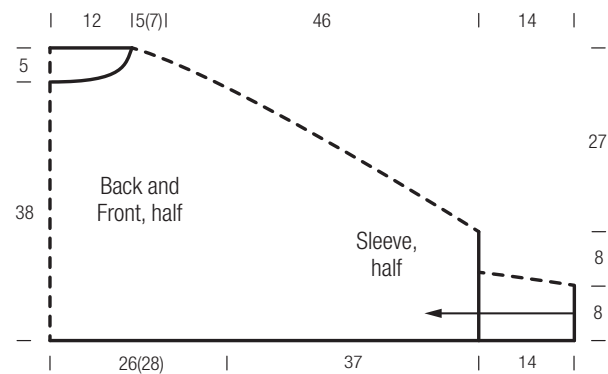


For better readability,  
turn chart 90° clockwise

circular needle as st count increases.

Next, for sts before arrow b and sts after arrow c rep rows [5 – 44] 3 times and a total of 164 rows has been worked in chart patt.

For sts between arrow b and c cont to work center incs as established, that is: Work rows [33 – 44] 7 times more, then work rows 33 and 34 once more = 48 sts on either side of center 3 sts, 99 sts between arrow b and c and 159 sts total. After all incs have been worked, work even in patt across sts between arrow b and c until 164 rows have been worked in chart patt, matching the number of rows worked



### Chart key:

- = k1
- ▤ = p1
- = represents "no stitch" (included to keep st count correct)
- ◼ = k1 on RS; yo, p1 on WS
- ☑ = M1L
- ☒ = M1R
- = sl 3 sts to cn and hold in back of work, k4, then k3 from cn
- = sl 4 sts to cn and hold in front of work, k3, then k4 from cn
- = on RS: ([k1, yo] 3 times, k1) in next st = 7 sts; on WS: p all sts and yos
- = sl 7 sts pwise to right needle, dropping yos and pulling sts up to elongate; sl same 7 sts back to right needle, k7tog tbl into same 7 sts tog
- = place holder for cables worked before and after center sts. Cables are worked over 16 rows; on first row of cable, 1 st is increased to 7 sts; on last row of cable, 7 sts are decreased

## Poncho Pullover

before arrow b and after arrow c.

For remainder of piece, work in k1, p3 rib across all 159 sts.

At same time, when working first rep of rows 33 – 44 between arrow b and c, beg working 7-st cable crossing at each double arrow at top edge of chart.

At same time, when piece meas approx. 51 cm from cast-on and 108 rows have been worked in chart patt, place marker at each edge to indicate end of sleeve.

At same time, when 148 (154) rows have been worked in chart patt, divide for back and front: Next RS row: Work first 78 sts and turn, placing rem 81 sts on holder. **Back:** Work even for another 35 rows and back meas approx. 12 cm. Place sts on holder. Return 81 held sts to needle and with RS facing rejoin yarn. Bind off first 3 sts, work to end. **Front:** Cont in patt and bind off 4 sts at beg of next RS row, 2 sts at beg of next RS row, 1 st at beg of every other RS row 4 times. Work even for 16 rows. Place rem 70 sts on holder.

**Right half of back and front:** Worked side to side beg at right sleeve. Complete as for left half of back and front, reversing front neck shaping.

**Finishing:** Pin pieces to measurements and block. Join front halves with 3-needle bind-off: Hold wrong sides of pieces together. Knit first st of each needle tog. \* Knit next 2 sts tog, then slip first st over 2nd st and off needle. Repeat from \* until all sts are bound off. Join back halves in same way. Sew sleeve seams to markers. With size 4.5 mm circular needle pick up and k 106 sts around neck edge. Join for working in rnds. Work rib patt in rnds for 4 cm. Next inc rnd: \* K1, p1, k1, p1, M1L; rep from \*, end k1, p1 = 132 sts. Next rnd: \* K1, p1, k1, p2; rep from \* around, end k1, p1. Rep last rnd until collar meas 8 cm from beg. Next inc rnd: \* K1, p1, M1L, k1, p2; rep from \*, end k1, p1, M1L = 159 sts. Change to shorter size 5.5 mm circular needle. Next rnd: \* K1, p2; rep from \* around. Rep last rnd until collar meas 24 cm from beg. Loosely bind off all sts in rib.