

PULLOVER



PULLOVER



PULLOVER · FATTO

Size 36/38 (40/42, 44/46)

Instructions are given for first size. Figures in parenthesis refer to larger sizes. When only one figure is given, it applies to all sizes.

Materials: 200 (250, 300) g of Lana Grossa **Fatto** (62% Merino wool, 26% mohair, 12% polyamide; 175 m/50 g)

in Charcoal (col 11) and 100 (150, 150) g each in Dark Grey (col 10), Light Grey (col 9) and Burgundy (col 3). Size 6 mm needles; size 6 mm circular needle, 40 cm long; one set size 5 mm double-pointed needles [dpns].

Rib patt: P2, k2.

Box patt: Multiple of 13 + 2 + 2 selvage sts. Work according to chart. Numbers at right edge of chart indicate RS rows, numbers at left edge of chart indicate WS rows. Rep rows 1 – 20, end with a chart row 4.

Slip stitch selvage: On RS rows: K first st tbl, sl last st pwise wyib; on WS rows: P first st tbl, sl last st pwise wyif.

Gauges: On size 6 mm needles: 17 sts and 26 rows = 10 x 10 cm in box patt; 17 sts and 26 rows = 10 x 10 cm in rib patt.

Back and sleeves: Make 4 rectangles alike, two in Charcoal, one in Light Grey and one in Burgundy. With size 6 mm needles cast on 95 (108, 121) sts for each rectangle. Next RS row: Sl st selvage, work row 1 of box st chart ast foll: Work 13-st patt rep between arrows 7 (8, 9) times, work to end of chart, sl st selvage. Cont to foll chart until piece meas approx. 40 cm from cast-on. Work rows 1 – 20 a total of 5 times, then work rows 1 – 4 once more = 104 rows. Loosely bind off all sts.

Front: With size 6 mm needles and Dark Grey cast on 52 (60, 68) sts. Next WS row: Sl st selvage, p2, * k2, p2; rep from *, end

sl st selvage. Next RS row: Sl st selvage, work sts as they appear, end sl st selvage. Cont in rib patt as established until piece meas 49 (51, 53) cm from cast-on, ending with a WS row. Shape neck: Next RS row: Bind off center 16 sts. Working each side separately, bind off 4 sts at each neck edge once, 3 sts once, 2 sts once, 1 st 3 times. Work even in rib patt until piece meas 55 (57, 59) cm from cast-on. Bind off rem 6 (10, 14) sts for each shoulder.

Finishing: Pin pieces to measurements and block. Arrange back and sleeve rectangles next to each other and patt facing in direction of arrows as shown on diagram. Sew rectangles tog. Center front over top edge of rectangles. Sew front shoulders to top edge of rectangles. Fold rectangles in towards left and right side edge of front as shown by arrows on folding diagram. Sew rectangles to front, leaving bottom 7 cm of front unsewn for side vents. Sew horizontal seams between A and B and C and D over 30 cm, leaving rem 10 cm unsewn for arm openings. With size 6 mm circular needle and Charcoal pick up and k 92 sts evenly around neck edge. Join for working in rnds. Work rib patt in rnds for 24 cm. Bind off all sts in rib. Sleeve cuffs: With size 5 mm dpns and Charcoal pick up and k 40 sts around arm opening. Arrange sts evenly on 4 needles = 10 sts per needle. Place beg of rnd marker and join for working in rnds. Work rib patt in rnds for 18 (15, 12) cm. Bind off all sts in rib.

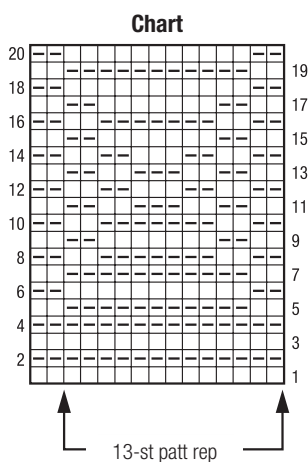
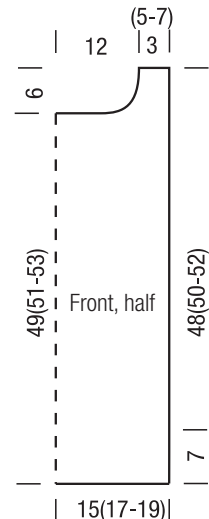
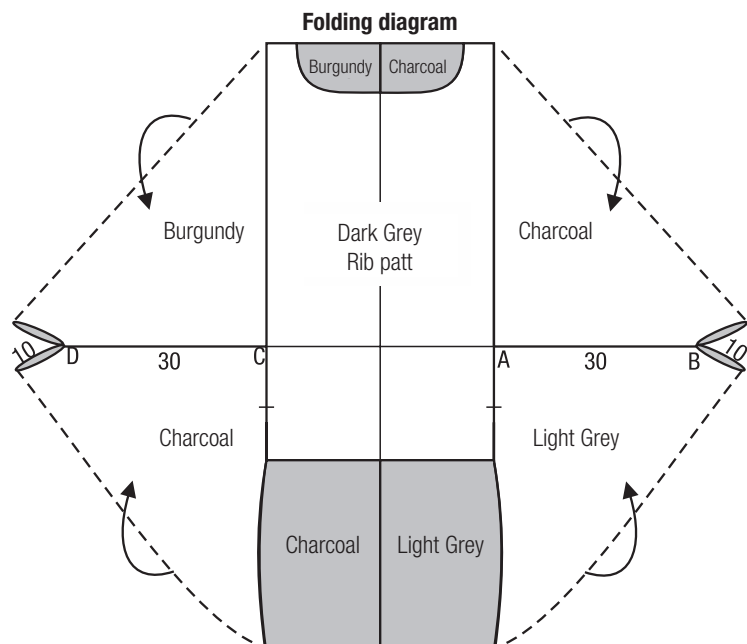
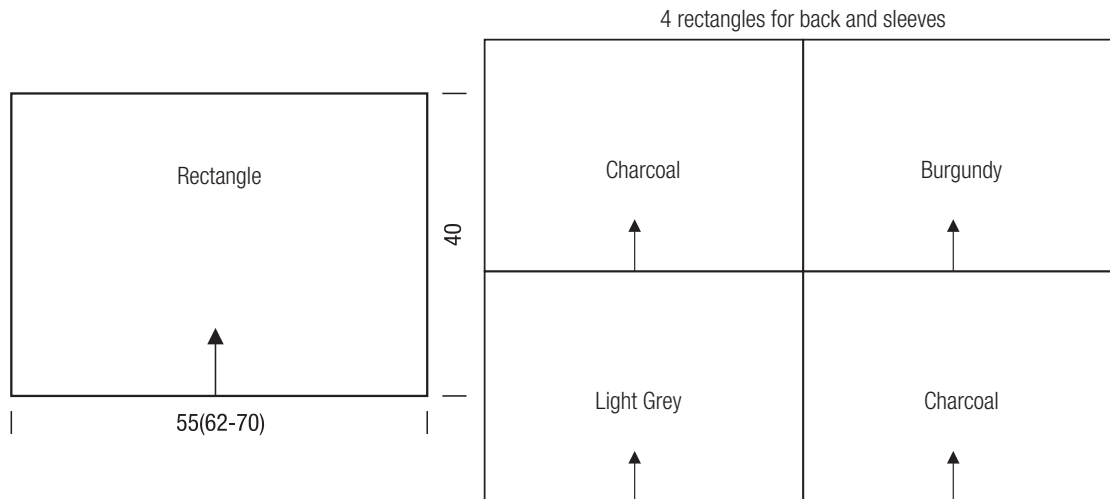


Chart key:

- = k1
- ▣ = p1



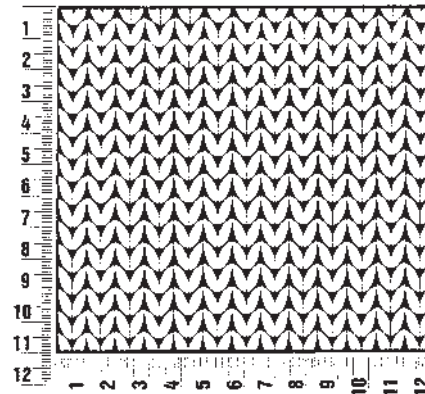
PULLOVER



Gauge Swatch

Before you begin ...

...make a gauge swatch. Use the recommended needles, yarns and pattern stitch for your gauge swatch. It should measure approx. 12 cm x 12 cm. Cast-on and bind-off rows, as well as selvedge stitches should not be included in the measurement. Pin your swatch and block it as you would the finished pieces of the garment. Count stitches and rows over 10 cm. If your gauge swatch is too small, switch to larger needles. If your gauge swatch is too big, switch to smaller needles.



Abbreviations

beg = begin(ning) · **ch** = chain · **cont** = continue · **dec** = de-creas(e)(ing) · **inc** = increas(e)(ing) · **k** = knit · **kwise** = as if to knit · **meas** = measures · **M1L** = lift strand between sts from front to back and knit this strand through the back loop · **M1R** = lift strand between sts from the back and knit this strand through the front loop · **patt** = pattern · **pm** = place marker · **p** = purl · **pwise** = as if to purl · **rem** = remain(ing) · **rep** = repeat(s) · **rev St st** = reverse stockinette stitch · **rnd(s)** = round(s) · **RS** = right side · **sc** = single

crochet · **skp** = slip 1 stitch as if to knit, knit 1 stitch, pass slipped stitch over knitted stitch · **sk2p** = slip 1 stitch as if to knit, knit 2 together, pass slipped stitch over knitted stitch · **s2kp** = slip 2 stitches as if to knit, k 1 stitch, pass slipped stitches over knitted stitch · **sl** = slip · **sl st** = slip st · **st(s)** = stitch(es) · **St st** = stockinette stitch · **tbl** = through the back loop · **tog** = together · **wyib** = with yarn in back of work · **wyif** = with yarn in front of work · **WS** = wrong side · **yo(s)** = yarn over(s)