



www.lanagrossa.com

JACKET · CASHSETA

Design 15 from Linea Pura 12

JACKET • CASHSETA

Design 15 from Linea Pura 12



www.lanagrossa.com

Size 36 – 40
One size fits all.

Materials: 650 g of Lana Grossa **Cashseta** (40% Modal, 30% polyamide; 15% cashmere, 15% silk; 100 m/50 g) in Coral **(col 27)**. Size 4 and 6 mm needles; size 4 and 6 mm circular needles, each 100 cm long.

Slip stitch selvage: On every row: K first st, sl last st pwise wyif.

Rib and lace patt: Work according to chart. Numbers at right edge of chart indicate RS rows; on WS rows, work sts as they appear. Position sts as given in instructions. **Note:** On rows 2 – 8 of chart section B, work the double yo as foll: K first yo and p 2nd yo. On rows 10 – 16 of chart section B, work the double yo as foll: P first yo and k 2nd yo.

Note: The 'wrong side' of the patt is considered the 'right side'.

Gauge: 22 sts and 22 rows = 10 x 10 cm in rib and lace patt on size 6 mm needles.

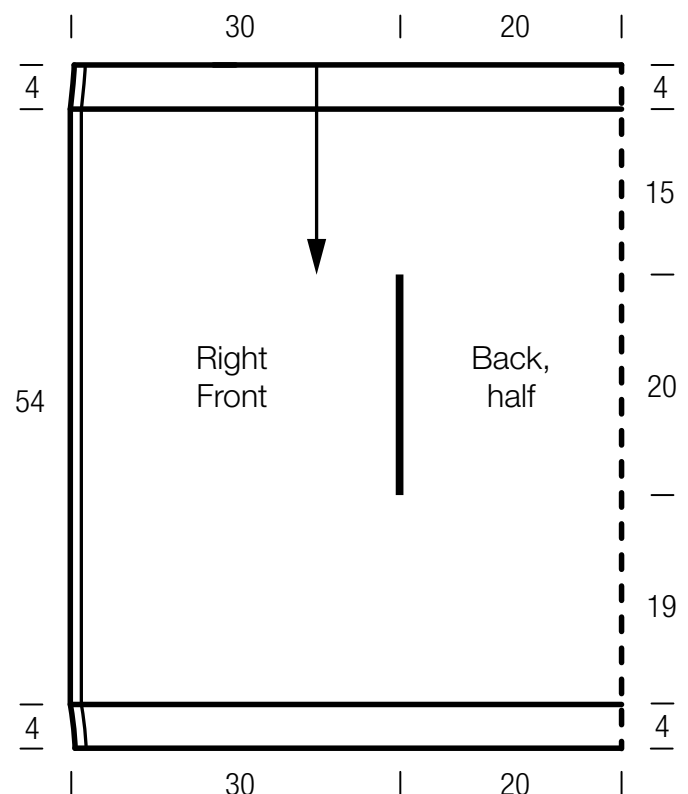
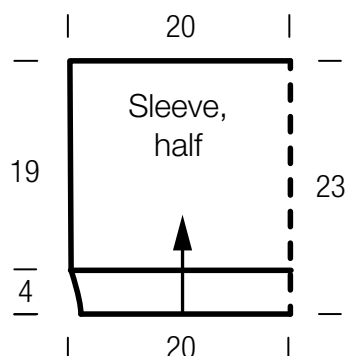
Note: Back and fronts are worked in one piece from the top down. Arrow on schematic shows direction of work.

Back and fronts: With size 4 mm circular needle cast on 225 sts. Next row (RS): Work row 1 of chart section A as foll: Work to arrow a, work 22 sts between arrow a and b 3 times, work 22 sts between arrow b and c 4 times, work 22 sts between arrow c and d 3 times, work to end of chart. Work rows 2 – 4, then rep rows 3 and 4 for a total of 14 rows from cast-on. Change to size 6 mm circular needle. Work row 1 of chart section B, positioning sts as given for section A. Work even in patt until piece meas approx. 19 cm from cast-on and 34 rows of section B have been worked. Divide for back and fronts: Place first 69 sts for right front and last 68 sts for left front on separate holders = 88 sts rem for back. **Back:** Cast on 1 st at beg of row = 89 sts. Working newly cast-on st in St st (k on RS, p on WS), cont in patt as established until 44 rows have been worked for back, binding off 1 st at beg of last RS row = 88 sts and back meas approx. 20 cm from divide. Place

sts on holder, cut yarn. **Right front:** With RS facing rejoin yarn to 69 right front sts on hold, patt to end of row. Cont in patt as established until 44 rows have been worked for right front and right front meas approx. 20 cm from divide. Place sts on holder, do not cut yarn. **Left front:** With RS facing, rejoin yarn to 68 left front sts on hold, cast on 1 st at beg of row = 69 sts. Working newly cast-on st in St st (k on RS, p on WS), cont in patt as established until 44 rows have been worked for left front, binding off 1 st at beg of last RS row = 68 sts and left front meas approx. 20 cm from divide. Place sts on holder, cut yarn. **Next row (RS):** Work in patt across right front, back and left front sts = 225 sts. Work a total of 42 rows in patt across all sts and piece meas approx. 19 cm from joining row. Change to size 4 mm circular needle. Work rows 1 – 4 of chart section A, then rep rows 3 and 4 for a total of 14 rows. Loosely bind off all sts in rib.

Sleeves: With size 4 mm needles cast on 91 sts. Next row (RS): Work row 1 of chart section A as foll: Work selvage st and st before arrow a, work 22 sts between arrow a and b 4 times, work last (= selvage) st. Work rows 2 – 4, then rep rows 3 and 4 for a total of 14 rows from cast-on. Change to size 6 mm needles. Work row 1 of chart section B, positioning sts as given for section A. Work even in patt until piece meas approx. 23 cm from cast-on and 42 rows of section B have been worked. Loosely bind off all sts in patt.

Finishing: Pin pieces to measurements and block. With 'wrong' side of pieces facing out, set sleeves into armholes, sew sleeve seams.

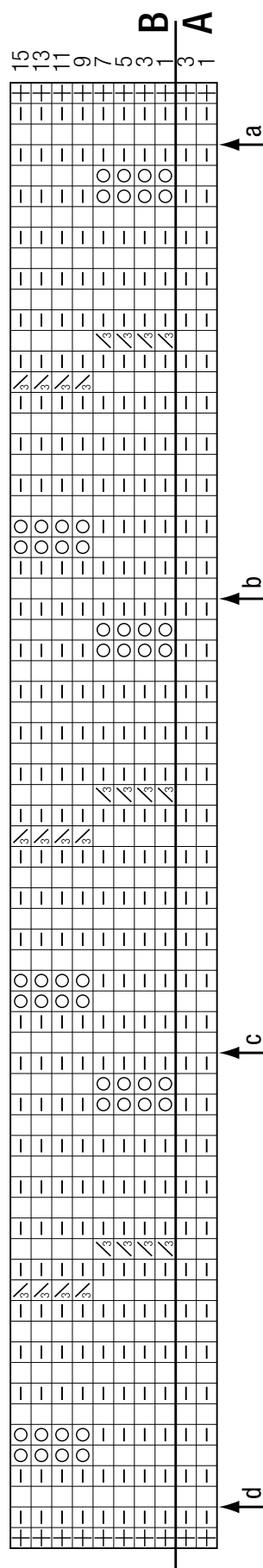


JACKET · CASHSETA

Design 15 from Linea Pura 12



www.lanagrossa.com



Chart

For better readability,
turn chart 90o clockwise

Chart key:

- = slip st selvage
- = k1
- = p1
- = yo
- = k3tog
- = sk2p: sl 1 kwise, k2tog, pass slipped st over knitted st

Gauge Swatch

Before you begin ...

...make a gauge swatch. Use the recommended needles, yarns and pattern stitch for your gauge swatch. It should measure approx. 12 cm x 12 cm. Cast-on and bind-off rows, as well as selvage stitches should not be included in the measurement. Pin your swatch and block it as you would the finished pieces of the garment. Count stitches and rows over 10 cm. If your gauge swatch is too small, switch to larger needles. If your gauge swatch is too big, switch to smaller needles.



Abbreviations

beg = begin(ning) · **ch** = chain · **cont** = continue · **dec** = decreas(e)(ing) · **inc** = increas(e)(ing) · **k** = knit · **kwise** = as if to knit
meas = measures · **M1L** = lift strand between sts from front to back and knit this strand through the back loop · **M1R** = lift strand between sts from the back and knit this strand through the front loop · **patt** = pattern · **pm** = place marker · **p** = purl
pwise = as if to purl · **rem** = remain(ing) · **rep** = repeat(s) · **rev St st** = reverse stockinette stitch · **rnd(s)** = round(s) · **RS** = right side · **sc** = single crochet · **skp** = slip 1 stitch as if to knit, knit 1 stitch, pass slipped stitch over knitted stitch · **sk2p** = slip 1 stitch as if to knit, knit 2 together, pass slipped stitch over knitted stitch · **s2kp** = slip 2 stitches as if to knit, k 1 stitch, pass slipped stitches over knitted stitch · **sl** = slip · **st(s)** = stitch(es) · **St st** = stockinette stitch · **tbl** = through the back loop · **tog** = together · **wyib** = with yarn in back of work · **wyif** = with yarn in front of work · **WS** = wrong side · **yo(s)** = yarn over(s)

Publisher's Info

Publisher: Lana Grossa GmbH, Gaimersheim, www.lanagrossa.com

Photographer: Petra Obermüller