

FILATI NO. 57

FILATI

Design 4

PULLOVER



PULLOVER

Size 36 – 40
One size fits all.

Materials: 450 g of Lana Grossa **Bottone** (94% cotton, 6% polyamide; 120 m/50 g) in Rosewood (**col 3**). Size 4.5 mm needles; size 3.5 mm crochet hook.

Lace patt [front]: Work according to chart A. Numbers at right edge of chart indicate RS rows; on WS rows, p all sts and yos or work according to chart key. Work to patt rep, work 34 sts between arrows for patt rep, work to end of chart. Rep rows 1 – 28.

Eyelet patt [back and sleeves]: Work according to chart B. Numbers at right edge of chart indicate RS rows; on WS rows, p all sts and yos or work according to chart key. Work to patt rep, work 4 sts between arrows for patt rep, work to end of chart. Rep rows 1 – 12.

Gauges: On size 4.5 mm needles: 19.5 sts and 29 rows = 10 x 10 cm in lace patt; 19 sts and 29 rows = 10 x 10 cm in eyelet patt.

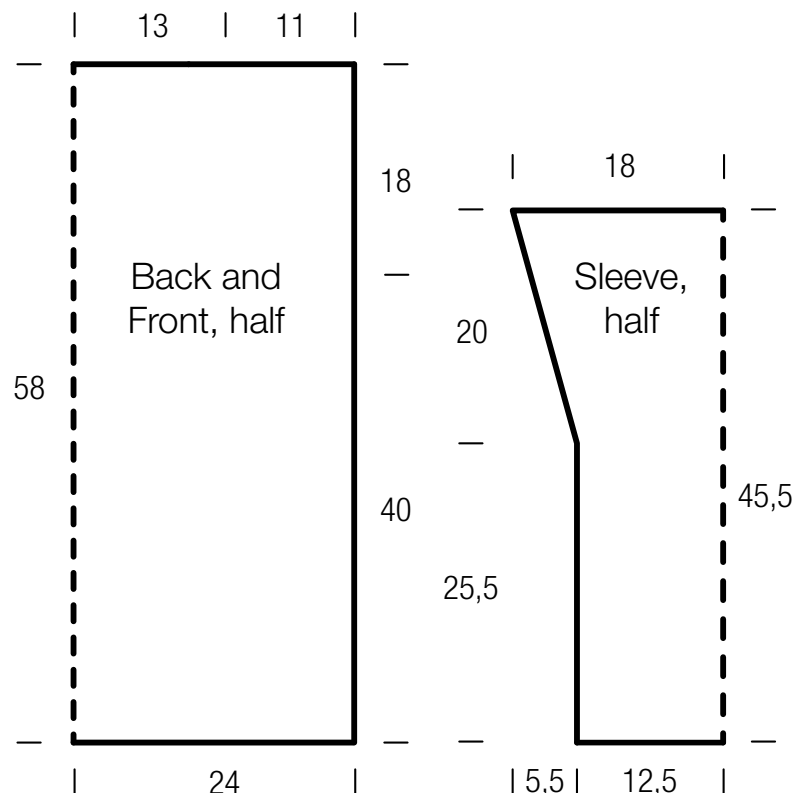
Back: With size 4.5 mm needles cast on 94 sts. K 1 WS row. Work eyelet patt according to chart B until piece meas 40 cm

from cast-on. Place marker at each edge to indicate beg of armholes. Cont in patt until piece meas 18 cm from armhole markers. Bind off all sts.

Front: Work 4.5 mm needles cast on 95 sts. K 1 WS row. Work lace patt according to chart A until piece meas 40 cm from cast-on. Place marker at each edge to indicate beg of armholes. Cont in patt until piece meas 18 cm from armhole markers. Bind off all sts.

Sleeves: With size 4.5 mm needles cast on 50 sts. K 1 WS row. Work eyelet patt according to chart B until piece meas 25.5 cm from cast-on, ending with a WS row. Shape sleeve: Inc row (RS): Work in patt, inc 1 st at each end of row = 52 sts. Cont in patt, rep inc row every 6th row 5 times, then every 4th row 4 times = 70 sts. Work increased sts into patt. Work even in patt until piece meas 45.5 cm from cast-on. Loosely bind off all sts.

Finishing: Pin pieces to measurements and block. Sew shoulder seams, leaving center 26 cm open for neck. Sew on sleeves between markers. Sew side and sleeve seams. **Neck trim:** With size 3.5 mm crochet hook, work 1 rnd sl st around neck edge.



PULLOVER

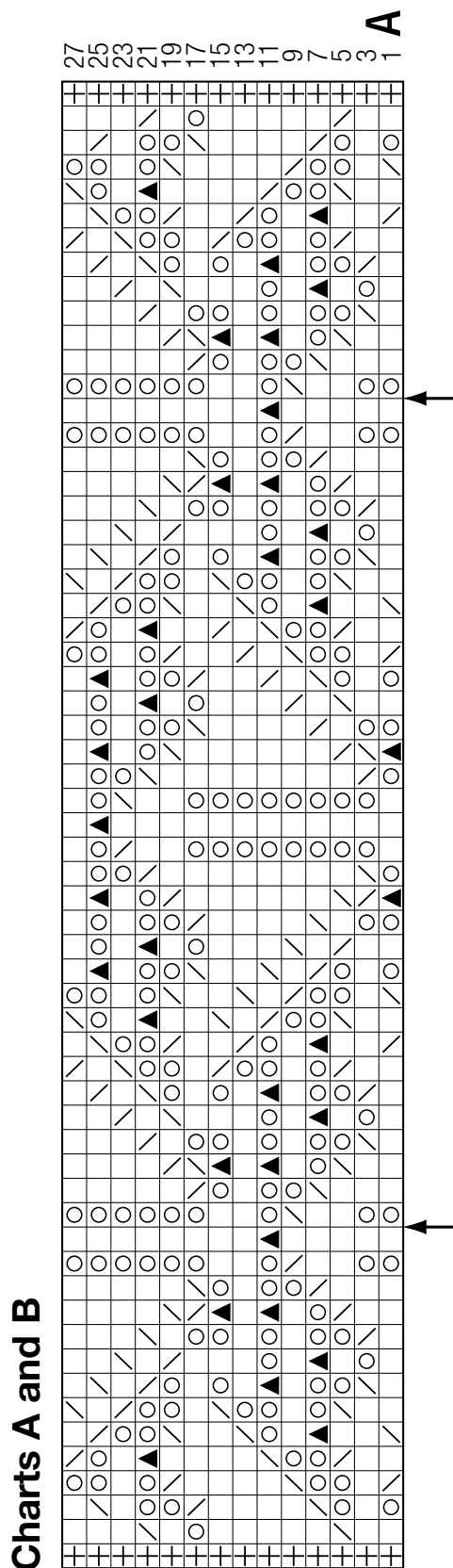


Chart key:

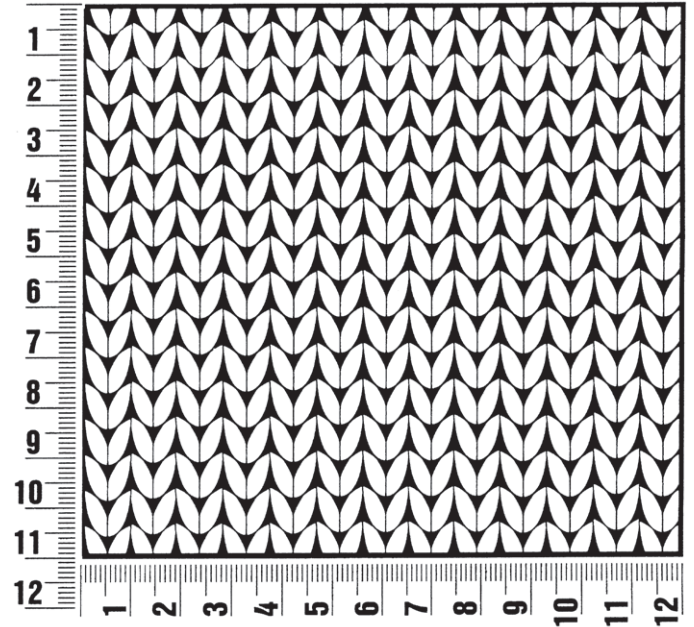
- ⊕ = selvage st
- = k1
- = yo
- ▧ = k2tog
- ▨ = skp: sl 1 kwise, k1, pass slipped st over knitted st
- ▴ = s2kp: sl 2 kwise, k1, pass slipped sts over knitted st
- = yo twice; on foll WS row, p1 in first yo, k1 in 2nd yo

PULLOVER

Gauge Swatch

Before you begin ...

...make a gauge swatch. Use the recommended needles, yarns and pattern stitch for your gauge swatch. It should measure approx. 12 cm x 12 cm. Cast-on and bind-off rows, as well as selvage stitches should not be included in the measurement. Pin your swatch and block it as you would the finished pieces of the garment. Count stitches and rows over 10 cm. If your gauge swatch is too small, switch to larger needles. If your gauge swatch is too big, switch to smaller needles.



Abbreviations

beg = begin(ning) · **ch** = chain · **cont** = continue · **dec** = decreas(e)(ing) · **inc** = increas(e)(ing) · **k** = knit · **kwise** = as if to knit
meas = measures · **M1L** = lift strand between sts from front to back and knit this strand through the back loop · **M1R** = lift strand between sts from the back and knit this strand through the front loop · **patt** = pattern · **pm** = place marker · **p** = purl
pwise = as if to purl · **rem** = remain(ing) · **rep** = repeat(s) · **rev St st** = reverse stockinette stitch · **rnd(s)** = round(s) · **RS** = right side · **sc** = single crochet · **skp** = slip 1 stitch as if to knit, knit 1 stitch, pass slipped stitch over knitted stitch · **sk2p** = slip 1 stitch as if to knit, knit 2 together, pass slipped stitch over knitted stitch · **s2kp** = slip 2 stitches as if to knit, k 1 stitch, pass slipped stitches over knitted stitch · **sl** = slip · **st(s)** = stitch(es) · **St st** = stockinette stitch · **tbl** = through the back loop · **tog** = together · **wyib** = with yarn in back of work · **wyif** = with yarn in front of work · **WS** = wrong side · **yo(s)** = yarn over(s)