



www.lanagrossa.com

COAT · SILKHAIR

Design 01 from Filati Handstrick 71

COAT · SILKHAIR

Design 01 from Filati Handstrick 71



www.lanagrossa.com

Size 36 – 40 (42/44, 46/48)

Instructions are given for first size. Figures in parenthesis refer to larger sizes. When only one figure is given, it applies to all sizes.

Materials: 300 (325, 350) g of Lana Grossa **Silkhair** (70% mohair, 30% silk; 210 m/25 g) in Mustard Yellow (**col 128**). Size 6 mm needles.

Note: Work with 2 strands of yarn held tog throughout.

Selvage sts: On every row: Sl first st kwise, k last st. Maintain selvage sts throughout.

Garter st: K every row.

St st: K on RS, p on WS.

Rev St st: P on RS, k on WS.

Gauge: 14 sts and 20 rows = 10 x 10 cm in St st and rev St st with size 6 mm needles and 2 strands of yarn held tog.

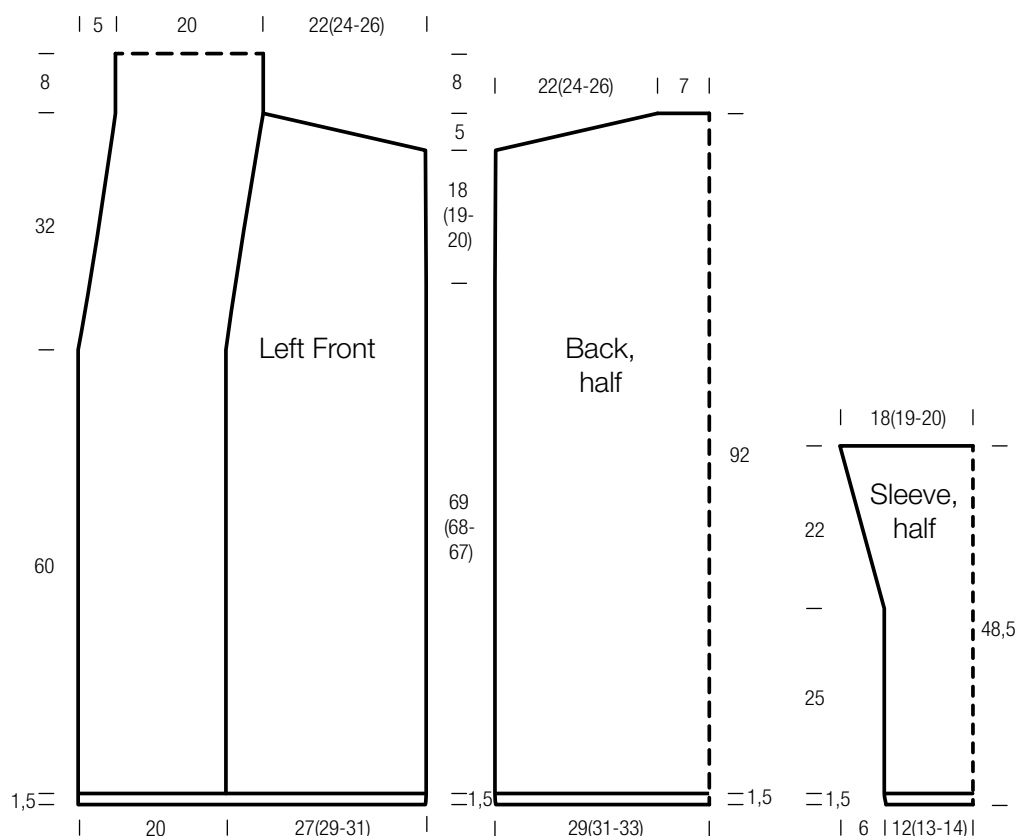
Back: With size 6 mm needles and 2 strands of yarn held tog cast on 84 (89, 94) sts. Beg and end with a WS row work in garter st for 3 rows and piece meas approx. 1.5 cm from cast-on. Work in St st for 69 (68, 67) cm. Place marker at each edge to indicate beg of armholes. Cont in St st until piece meas 18 (19, 20) cm from armhole markers, ending with a WS row. Shape shoulders: At each shoulder edge, bind off 7 (7, 8) sts once, then 7 sts once, 6 sts 3 times (then 7 sts 4 times / then 8 sts once, 7 sts 3 times). Bind off rem 20 (19, 20) sts.

Left front: With size 6 mm needles and 2 strands of yarn held tog cast on 68 (71, 73) sts. Beg and end with a WS row work in garter st for 3 rows and piece meas approx. 1.5 cm from cast-on. Next row (RS): Selvage st, work next 38 (41, 43) sts in St st, work next 28 sts in rev St st, selvage st. Cont in patt as established until piece meas 61.5 cm from cast-on, ending with a WS row. Shape neck: Dec row (RS): Selvage st, knit to last 3 sts worked in St st, skp, k1, work to end. Cont in patt, rep dec row every 10th row 3 times, then every 8th row 3 times. At same time, when piece meas same length as back to armhole, place marker at right edge to indicate beg of armhole and at same time, when same length as back to shoulder, shape shoulder at right edge same as for back = 29 sts rem for collar. Cast on 1 selvage st at right edge of collar = 30 sts and cont across collar sts for 8 cm. Place sts on holder.

Right front: Work same as for left front, reversing all shaping and patt placement and working decs for neck shaping on RS rows as foll: Selvage st, p28, k1, k2tog, work to end.

Sleeves: With size 6 mm needles and 2 strands of yarn held tog cast on 36 (38, 41) sts. Beg and end with a WS row work in garter st for 3 rows and piece meas approx. 1.5 cm from cast-on. Work in St st for 25 cm, ending with a WS row. Shape sleeve: Inc row (RS): Work in St st, inc 1 st at each end of row = 38 (40, 43) sts. Cont in St st, rep inc row every 6th row 3 times, then every 4th row 5 times = 54 (56, 59) sts. Work even until piece meas 48.5 cm from cast-on. Bind off all sts.

Finishing: Pin pieces to measurements and block. Sew shoulder seams. Join right and left collar and sew to back neck. Sew on sleeves between markers. Sew side and sleeve seams.



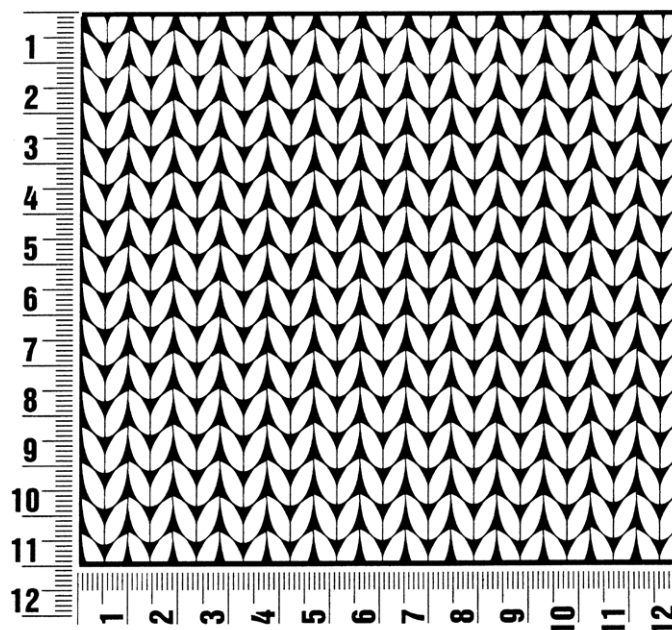
Filati Handstrick 71

www.lanagrossa.com

Gauge Swatch

Before you begin ...

...make a gauge swatch. Use the recommended needles, yarns and pattern stitch for your gauge swatch. It should measure approx. 12 cm x 12 cm. Cast-on and bind-off rows, as well as selvage stitches should not be included in the measurement. Pin your swatch and block it as you would the finished pieces of the garment. Count stitches and rows over 10 cm. If your gauge swatch is too small, switch to larger needles. If your gauge swatch is too big, switch to smaller needles.



Abbreviations

beg = begin(ning) · **ch** = chain · **cont** = continue · **dec** = decreas(e)(ing) · **inc** = increas(e)(ing) · **k** = knit · **kwise** = as if to knit
meas = measures · **M1L** = lift strand between sts from front to back and knit this strand through the back loop · **M1R** = lift strand between sts from the back and knit this strand through the front loop · **patt** = pattern · **pm** = place marker · **p** = purl
pwise = as if to purl · **rem** = remain(ing) · **rep** = repeat(s) · **rev St st** = reverse stockinette stitch · **rnd(s)** = round(s) · **RS** = right side · **sc** = single crochet · **skp** = slip 1 stitch as if to knit, knit 1 stitch, pass slipped stitch over knitted stitch · **sk2p** = slip 1 stitch as if to knit, knit 2 together, pass slipped stitch over knitted stitch · **s2kp** = slip 2 stitches as if to knit, k 1 stitch, pass slipped stitches over knitted stitch · **sl** = slip · **st(s)** = stitch(es) · **St st** = stockinette stitch · **tbl** = through the back loop · **tog** = together · **wyib** = with yarn in back of work · **wyif** = with yarn in front of work · **WS** = wrong side · **yo(s)** = yarn over(s)

Publisher's Info

Publisher: Lana Grossa GmbH, Gaimersheim, www.lanagrossa.com

Photographer: Herbert Dehn, www.herbertdehn.com