

JACKET

---



## JACKET

**Size** 36/38 (40/42, 44/46)

Instructions are given for first size. Figures in parenthesis refer to larger sizes. When only one figure is given, it applies to all sizes.

**Materials:** 500 (550, 600) g of Lana Grossa **Piuma** (75% pure wool, 15% alpaca, 10% polyamide; 140 m/50 g) in Olive/Grey-Green/Black (**col 3**). Size 7 mm needles; size 7 mm circular needle, 40 cm long; cable needle [cn]; size 6 mm crochet hook.

**Rib patt:** K4, p4.

**Cable:** Work according to chart. Numbers at right edge of chart indicate RS rows; on WS rows, work sts as they appear. Rep rows 1 – 40.

**St st:** K on RS, p on WS.

**Gauges:** On size 7 mm needles: 13 sts and 20 rows = 10 x 10 cm in rib patt; 35 sts and 20 rows = 20 x 10 cm in cable patt.

**Back:** With size 7 mm needles cast on 81 (89, 97) sts. Next row (RS): Selvage st, p2, [k4, p4] twice, k4, work row 1 of cable chart over next 35 sts, [k4, p4] twice, k4, p2, selvage st (selvage st, k2, [p4, k4] 3 times, work row 1 of cable chart over next 35 sts, [k4, p4] 3 times, k2, selvage st / selvage st, p2, [k4, p4] 4 times, k4, work row 1 of cable chart over next 35 sts, [k4, p4] 3 times, k4, p2, selvage st). Cont in patt as established until piece meas 55 cm from cast-on, ending with a WS row. Shape armholes: Bind off 4 sts at beg of next 2 rows, 3 sts at beg of next 2 rows, 2 sts at beg of next 4 rows, 1 st at beg of next 4 rows = 55 (63, 71) sts. Work even until piece meas 78 (80, 82) cm from cast-on, ending with a WS row. Shape neck: Next row (RS): Bind off center 35 sts. Working each side separately, work even for 1 cm. Bind off rem 10 (14, 18) sts for each shoulder.

**Pocket lining:** Make 2 alike. With size 7 mm needles cast on 16 sts. Work in St st for 19 cm, ending with a RS row. Cut yarn. Place sts on holder.

**Left front:** With size 7 mm needles cast on 41 (45, 49) sts. Next row (RS): Selvage st, p2, [k4, p4] twice, k4, work row 1 of cable chart over next 17 sts (= first 17 sts of chart), selvage st (selvage st, k2, [p4, k4] 3 times, work row 1 of cable chart

over next 17 sts (= first 17 sts of chart), selvage st / selvage st, p2, [k4, p4] 3 times, work row 1 of cable chart over next 17 sts (= first 17 sts of chart), selvage st). Cont in patt as established until piece meas 27 cm from cast-on, ending with a WS row. Next row (RS): Patt over 9 (13, 17) sts, bind off next 16 sts for pocket opening, patt to end. Next row (WS): Patt to bound-off sts, then with WS of pocket lining facing, work 16 pocket lining sts from holder into patt, patt to end. Cont in patt across all sts until piece meas 55 cm from cast-on, ending with a WS row. Shape armhole: At beg of RS rows, bind off 4 sts once, 3 sts once, 2 sts twice, 1 st twice = 28 (32, 36) sts. Work even until piece meas 70 (72, 74) cm from cast-on, ending with a RS row. Shape neck: At beg of WS rows, bind off 5 sts once, 4 sts once, 3 sts once, 2 sts twice, 1 st twice. Work even until piece meas 79 (81, 83) cm from cast-on. Bind off rem 10 (14, 18) shoulder sts.

**Right front:** Work as given for left front, reversing all shaping and patt placement and working last 17 sts of cable chart.

**Sleeves:** With size 7 mm needles cast on 45 sts. Next row (RS): Selvage st, k4, work row 1 of cable chart over next 35 sts, k4, selvage st. Cont in patt as established and shape sleeve as foll: Inc 1 st at each end of 13 (11, 9)th row from cast-on, then every 12th row twice, then every 10th row 5 times (then every 10th row 5 times, then every 8th row 4 times / then every 8th row 9 times, then every 6th row 3 times) = 61 (65, 71) sts. Work increased sts into rib patt. Work even until piece meas 48 (50, 52) cm from cast-on, ending with a WS row. Shape sleeve cap: Bind off 2 sts at beg of next 2 rows, 1 st at beg of next 26 rows, 2 sts at beg of next 4 rows, 3 sts at beg of next 2 rows. Bind off rem 17 (21, 27) sts.

**Finishing:** Pin pieces to measurements and block. Sew pocket linings in place on WS. With size 6 mm crochet hook, work 1 row sc along left and right front edge. Sew shoulder seams. **Collar:** With size 7 mm circular needle and RS facing, pick up and k 78 sts evenly along right front, back and left front neck edge. Next row (WS): Selvage st, p11, [k3, p4] 3 times, k3, p6, [k3, p4] 3 times, k3, p11, selvage st. Working sts on foll rows as they appear, cont until collar meas 14 cm from pick-up row. Bind off all sts. Fold collar in half to WS and sew down. Seam short edges of collar. Sew in sleeves. Sew side and sleeve seams.

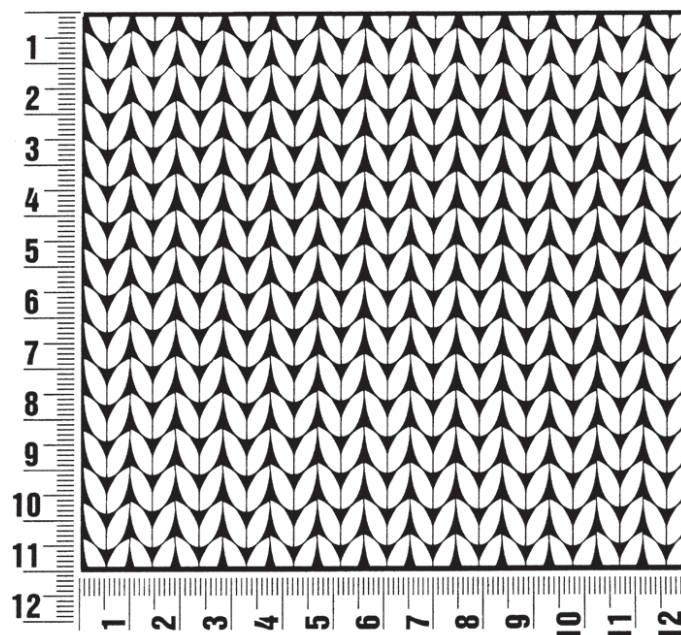


JACKET

## Gauge Swatch

### Before you begin ...

...make a gauge swatch. Use the recommended needles, yarns and pattern stitch for your gauge swatch. It should measure approx. 12 cm x 12 cm. Cast-on and bind-off rows, as well as selvage stitches should not be included in the measurement. Pin your swatch and block it as you would the finished pieces of the garment. Count stitches and rows over 10 cm. If your gauge swatch is too small, switch to larger needles. If your gauge swatch is too big, switch to smaller needles.



## Abbreviations

**beg** = begin(ning) · **ch** = chain · **cont** = continue · **dec** = decreas(e)(ing) · **inc** = increas(e)(ing) · **k** = knit · **kwise** = as if to knit  
**meas** = measures · **M1L** = lift strand between sts from front to back and knit this strand through the back loop · **M1R** = lift strand between sts from the back and knit this strand through the front loop · **patt** = pattern · **pm** = place marker · **p** = purl  
**pwise** = as if to purl · **rem** = remain(ing) · **rep** = repeat(s) · **rev St st** = reverse stockinette stitch · **rnd(s)** = round(s) · **RS** = right side · **sc** = single crochet · **skp** = slip 1 stitch as if to knit, knit 1 stitch, pass slipped stitch over knitted stitch · **sk2p** = slip 1 stitch as if to knit, knit 2 together, pass slipped stitch over knitted stitch · **s2kp** = slip 2 stitches as if to knit, k 1 stitch, pass slipped stitches over knitted stitch · **sl** = slip · **st(s)** = stitch(es) · **St st** = stockinette stitch · **tbl** = through the back loop · **tog** = together · **wyib** = with yarn in back of work · **wyif** = with yarn in front of work · **WS** = wrong side · **yo(s)** = yarn over(s)