

FILATI NO. 58

FILATI

Design 8

COAT



COAT

Size 36 – 42
One size fits all.

Materials: 800 g of Lana Grossa **Cool Air** (55% Merino wool, 33% baby alpaca, 12% polyamide; 125 m/50 g) in Yellow/Orange (**col 19**). Size 5.5 and 7 mm needles; size 7 and 8 mm circular needles, each 80 cm long; cable needle [cn]; size 6 mm crochet hook.

Slip stitch selvage: On every row: Knit first st, sl last st pwise wyif.

Rib patt: K2, p2.

Braided cable patt: Work according to chart A/B for back, work according to chart C/D for fronts. Numbers at left edge of charts indicate WS rows, numbers at right edge of charts indicate RS rows. On all WS rows not shown on charts, work sts as they appear. Work to patt rep, work sts between arrows for patt rep, work to end of chart. Work rows 1 – 7 of chart section A/C 1 time, then rep rows 6 and 7, end with rows 20 and 21. Work rows 1 – 24 of chart section B/D 1 time, then rep rows 5 – 24.

Gauge: 18 sts and 18.5 rows = 10 x 10 cm in braided cable patt on size 7 mm needles, measured hanging from needle.

Back: With size 5.5 mm needles cast on 72 sts. Beg with a WS row, work rows 1 – 7 of chart section A 1 time, then work rows 6 and 7 six more times, then work rows 20 and 21, increasing 35 sts on last WS row as shown on chart = 107 sts. Change to size 7 mm needles. Work rows 1 – 24 of chart section B 1 time, then rep rows 5 – 24 until piece meas 69 cm from cast-on. Place marker at each edge to indicate beg of armholes. Cont in patt until piece meas 20 cm from armhole markers, ending with a WS row. Shape shoulders: Bind off 6 sts at beg of next 10 rows, 7 sts at beg of next 2 rows. Place rem 33 sts on holder.

Pocket lining: Make 2 alike. With size 7 mm needles cast on 23 sts. Beg with a WS row, work in St st [k on RS, p on WS] for 16 cm, ending with a RS row. Place sts on holder, cut yarn.

Left front: With size 5.5 mm needles cast on 48 sts. Beg with a WS row, work rows 1 – 7 of chart section C 1 time, then work rows 6 and 7 six more times, then work rows 20 and 21, increasing 23 sts on last WS row as shown on chart = 71 sts. Change to size 7 mm needles. Work rows 1 – 24 of chart section D 1 time, then rep rows 5 – 24 until piece meas 45 cm from cast-on, ending with a WS row. Next RS (pocket opening) row: Patt over next 22 sts, bind off next 23 sts for pocket opening, patt to end. Next row (WS): Patt to 1 st before bound-off sts, then with WS of pocket lining facing, work next st and first pocket lining st from holder tog, work 21 pocket lining sts from holder into patt, work last pocket lining st from holder and next st tog, patt to end. Cont in patt across all sts until piece meas 69 cm from cast-on. Place marker at right edge to indicate beg of armhole. Cont in patt until piece meas 20 cm from armhole marker, ending with a WS row. Shape shoulder: At beg of RS rows, bind off 6 sts 5 times, 7 sts 1 time. Place rem 34 sts on holder.

Right front: Work same as left front, reversing all shaping.

Sleeves: Sleeves are picked up along armhole edge and worked down to cuff edge. Sew shoulder seams. With size 7 mm circular needle and RS facing, pick up and k 71 sts evenly between armhole markers. Beg with row 10, work according to chart section B and shape sleeve as foll: Dec 1 st at each end of 6th row from pick-up row, then every 8th row 8 times = 53 sts. Work even until piece meas 41.5 cm from pick-up row, ending with a RS row. Change to size 5.5 mm needles. Beg with row 21, work according to chart section A, decreasing 17 sts evenly across first (= WS) row = 36 sts, until piece meas 45.5 cm from pick-up row. Loosely bind off all sts in rib.

Finishing: Pin piece to measurements and block. Sew pocket linings in place. Sew side and sleeve seams. **Collar:** Return 101 held collar sts to size 7 mm circular needle. Cont in braided cable patt as established for 6 cm. Change to size 8 mm circular needle. Cont in braided cable patt as established for 7 cm. Loosely bind off all sts in patt. With size 6 mm crochet hook, work 1 row rev sc [work sc from left to right] along front and collar edges.

COAT

Charts A/B and C/D

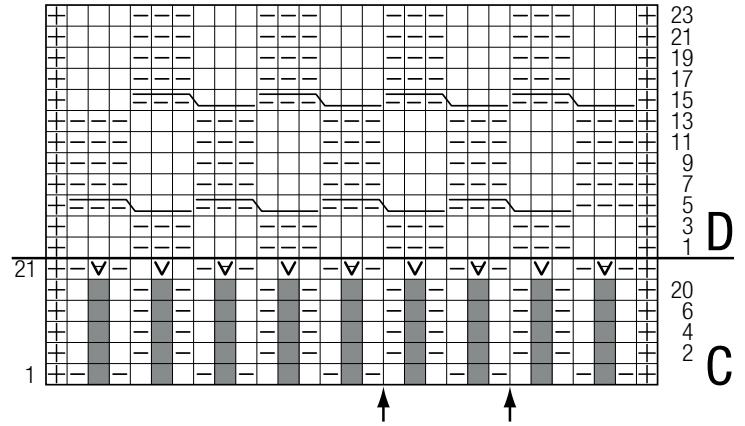
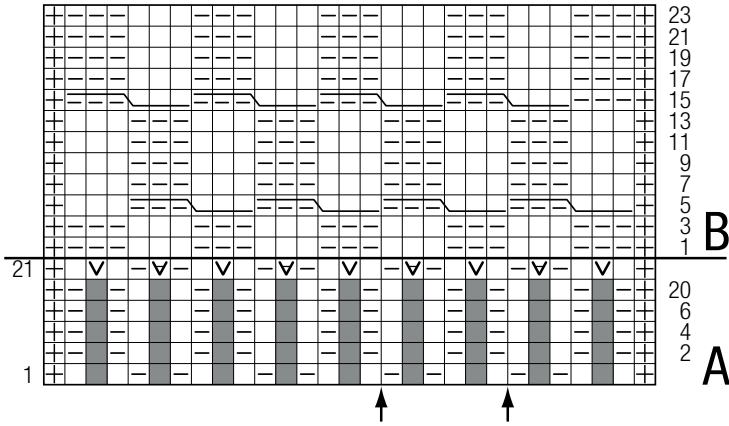
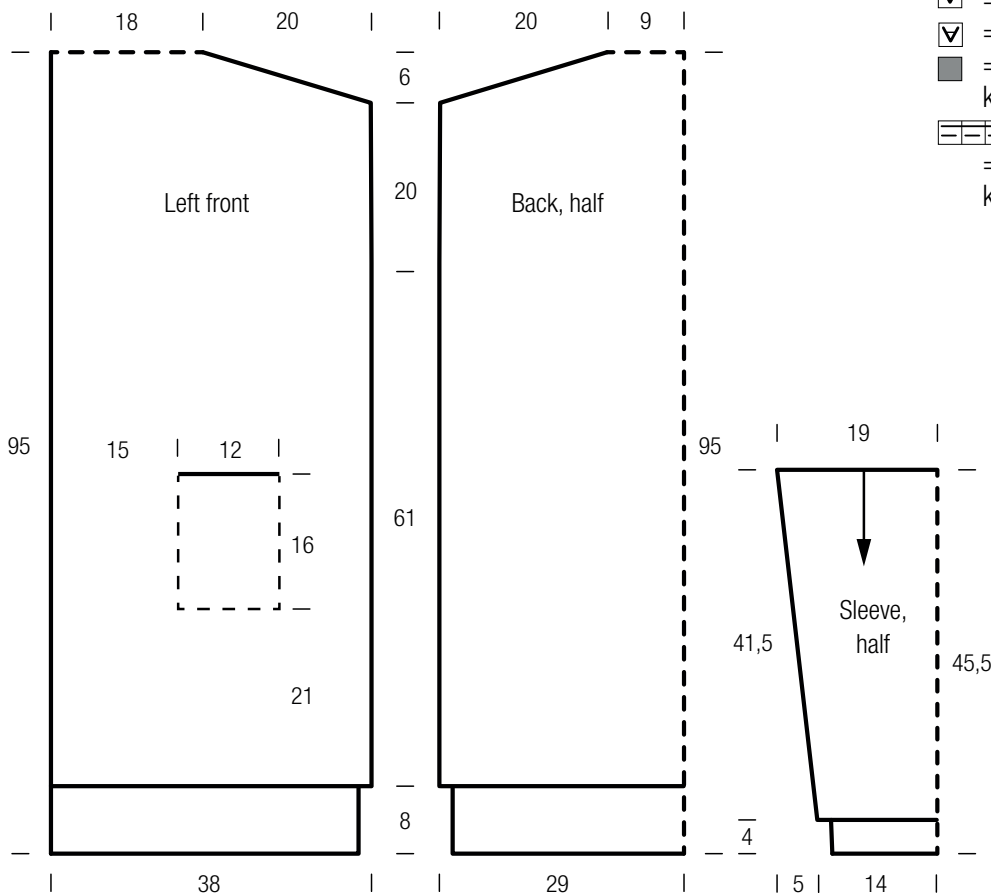


Chart key:

- ⊕ = slip st selvage
- = k1
- ▢ = p1
- ▣ = M1R
- ▤ = M1L
- = represents "no stitch" (included to keep st count correct)
- ▨ = sl 3 sts to cn and hold in front of work, k3, then p3 from cn

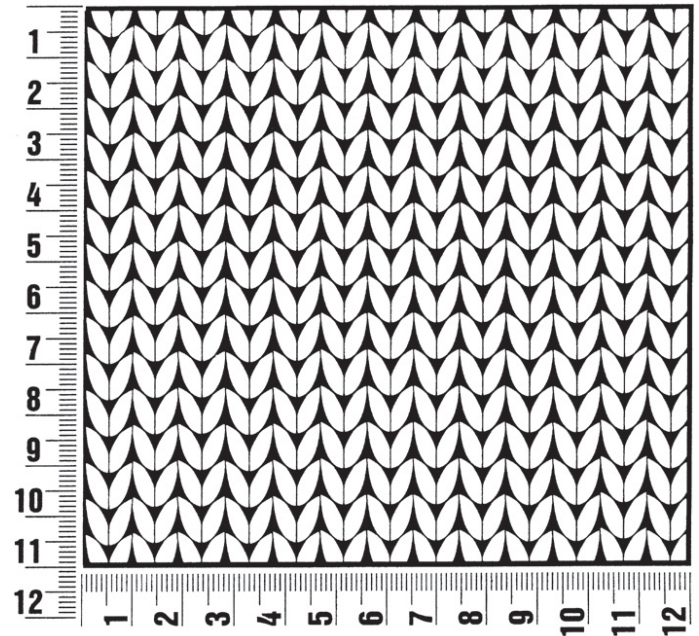


COAT

Gauge Swatch

Before you begin ...

...make a gauge swatch. Use the recommended needles, yarns and pattern stitch for your gauge swatch. It should measure approx. 12 cm x 12 cm. Cast-on and bind-off rows, as well as selvage stitches should not be included in the measurement. Pin your swatch and block it as you would the finished pieces of the garment. Count stitches and rows over 10 cm. If your gauge swatch is too small, switch to larger needles. If your gauge swatch is too big, switch to smaller needles.



Abbreviations

beg = begin(ning) · **ch** = chain · **cont** = continue · **dec** = decreas(e)(ing) · **inc** = increas(e)(ing) · **k** = knit · **kwise** = as if to knit
meas = measures · **M1L** = lift strand between sts from front to back and knit this strand through the back loop · **M1R** = lift strand between sts from the back and knit this strand through the front loop · **patt** = pattern · **pm** = place marker · **p** = purl
pwise = as if to purl · **rem** = remain(ing) · **rep** = repeat(s) · **rev St st** = reverse stockinette stitch · **rnd(s)** = round(s) · **RS** = right side · **sc** = single crochet · **skp** = slip 1 stitch as if to knit, knit 1 stitch, pass slipped stitch over knitted stitch · **sk2p** = slip 1 stitch as if to knit, knit 2 together, pass slipped stitch over knitted stitch · **s2kp** = slip 2 stitches as if to knit, k 1 stitch, pass slipped stitches over knitted stitch · **sl** = slip · **st(s)** = stitch(es) · **St st** = stockinette stitch · **tbl** = through the back loop · **tog** = together · **wyib** = with yarn in back of work · **wyif** = with yarn in front of work · **WS** = wrong side · **yo(s)** = yarn over(s)