

CLASSICI NO. 17

FILATI

Design 1

COAT



COAT

Size 36/38 (40/42, 44)

Instructions are given for first size. Figures in parenthesis refer to larger sizes. When only one figure is given, it applies to all sizes.

Materials: 900 (1000, 1100) g of Lana Grossa **Landlust Merino 120** (100% superwash Merino wool; 120 m/50 g) in Grey/Green (col 135) and 50 g of Lana Grossa **Landlust Merino 180** (100% superwash Merino wool; 180 m/50 g) in Grey/Green (col 235). Size 5, 7 and 8 mm needles; cable needle [cn].

Rib patt: P2, k2.

Rev St st: P on RS, k on WS.

St st: K on RS, p on WS.

14-st cable: Work according to chart. Numbers at right edge of chart indicate RS rows, numbers at left edge of chart indicate WS rows. Rep rows 1 – 16.

Two-stitch selvage: On RS row, k1, sl 1 pwise wyib, work to last 2 sts, sl 1 pwise wyib, k1. On WS row, sl 1 pwise wyif, p1, work to last 2 sts, p1, sl 1 pwise wyif.

Gauges: 13 sts and 20 rows = 10 x 10 cm in rev St st with size 8 mm needles and Landlust Merino 120; 14-st cable = 8 cm wide; 21 sts and 32 rows = 10 x 10 cm with size 5 mm needles and Landlust Merino 180.

Back: With size 7 mm needles and Landlust Merino 120 cast on 80 sts. Next row (WS): Selvage st, * p2, k2; rep from * to last 3 sts, p2, selvage st. Cont in rib patt as established until piece meas 9 cm from cast-on, increasing 0 (4, 8) sts evenly across last WS row = 80 (84, 88) sts. Change to size 8 mm needles. Work in rev St st until piece meas 95 cm from cast-on, ending with a WS row. Shape shoulders and neck: At each shoulder edge, bind off 3 sts 8 times, 4 sts once (3 sts 6 times, 4 sts 3 times / 3 sts 4 times, 4 sts 5 times). **At same time**, when piece meas 6 cm from beg of shoulder shaping, shape neck as foll: Next row (RS): Bind off center 14 sts. Working each side separately, bind off 3 sts at each neck edge once, 2 sts once. No sts rem.

Left front: With size 7 mm needles and Landlust Merino 120 cast on 71 sts. Next row (WS): Two-stitch selvage, * p2, k2; rep from *, end selvage st. Maintaining two-stitch selvage, cont in rib patt as established until piece meas 9 cm from cast-on, ending with a WS row. Change to size 8 mm needles. Next row (RS): Selvage st, work 6 sts in rev St st and at same time, inc 1 (2, 3) st(s) across these 6 sts = 7 (8, 9) sts in rev St st, cable over next 14 sts, 6 sts in rev St st and at same

time, inc 1 (2, 3) sts across these 6 sts = 7 (8, 9) sts in rev St st, rib patt as established over next 42 sts, two-stitch selvage = 73 (75, 77) sts. Cont in patt as established until piece meas 95 cm from cast-on, ending with a WS row. Shape shoulder: At beg of RS rows, bind off 3 sts 8 times, 4 sts once (3 sts 6 times, 4 sts 3 times / 3 sts 4 times, 4 sts 5 times) = 45 sts rem for collar. Cont in patt across collar sts for 11 cm. Place sts on holder.

Right front: Work same as left front, reversing all shaping and patt placement.

Sleeves: With size 7 mm needles and Landlust Merino 120 cast on 44 sts. Next row (WS): Selvage st, * p2, k2; rep from * to last 3 sts, p2, selvage st. Cont in rib patt as established until piece meas 9 cm from cast-on, ending with a WS row. Change to size 8 mm needles. Next row (RS): Selvage st, 14 sts in rev St st, cable over next 14 sts, 14 sts in rev St st, selvage st. Cont in patt as established and shape sleeve as foll: Inc 1 st at each end of 5th row from end of rib patt, then every 4th row 8 (4, 0) times, then every alt 2nd and 4th row 12 (17, 22) times = 86 (88, 90) sts. Work increased sts in rev St st. Work even until piece meas 46 cm from cast-on. Bind off all sts.








Left pocket lining: Front half: Place markers at left front side edge: First marker 45 (44, 43) cm up from bottom edge, 2nd marker 16 cm up from first marker. With size 5 mm needles and Landlust Merino 180, pick up and k 36 sts evenly between markers. Work in St st for 3 rows. Cont in St st and shape lining as foll: Dec 1 st at end of next RS row, then at end of every 6th row 2 times, then at end of every 4th row 2 times = 31 sts. * Inc 1 st at beg of next RS row, dec 1 st at end of foll RS row; rep from * 3 more times = 31 sts. Inc 1 st at beg and dec 1 st at end of next RS row = 31 sts. Dec 1 st at end of next RS row = 30 sts. Dec 1 st at each end of next 3 RS row = 24 sts. * Bind off 2 sts at beg of next WS row, dec 1 st at beg of next RS row; rep from * 1 more time = 18 sts. Bind off 2 sts at beg of next 3 rows. Bind off rem 12 sts. **Back half:** Place markers at left side edge of back: First marker 45 (44, 43) cm up from bottom edge, 2nd marker 16 cm up from first marker. With size 5 mm needles and Landlust Merino 180, pick up and k 36 sts evenly between markers. Work same as front half, reversing all shaping. Sew two halves tog.

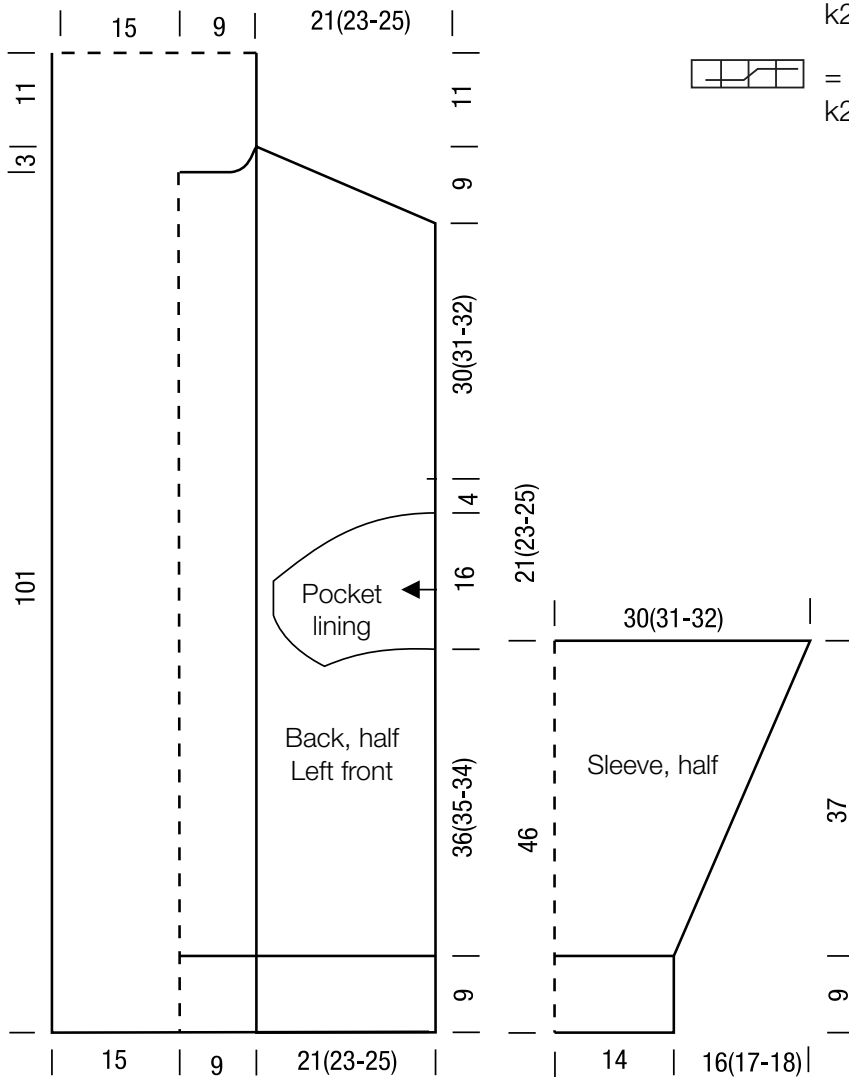
Right pocket lining: Work two halves same as left pocket lining, reversing all shaping.

Finishing: Pin pieces to measurements and block. Sew shoulder seams. Join collar sts, sew collar to back neck edge. Place markers 30 (31, 32) cm down from shoulders on front and back. Sew on sleeves between markers. Sew side and sleeve seams, leaving pocket openings free.

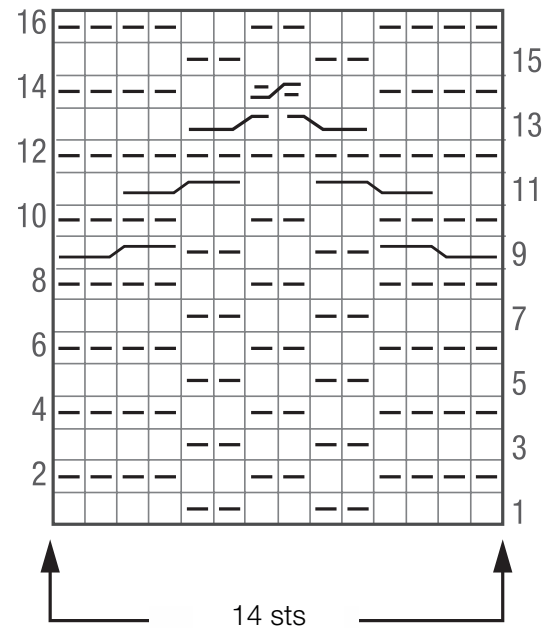
COAT

Chart key:

-  = k1
-  = p1
-  = skip next st; working behind skipped st, purl next st, purl skipped st, then sl both sts off left needle
-  = sl 2 sts to cn and hold in front of work, k1, then k2 from cn
-  = sl 1 st to cn and hold in back of work, k2, then k1 from cn
-  = sl 2 sts to cn and hold in front of work, k3, then k2 from cn
-  = sl 2 sts to cn and hold in back of work, k2, then k2 from cn



Chart

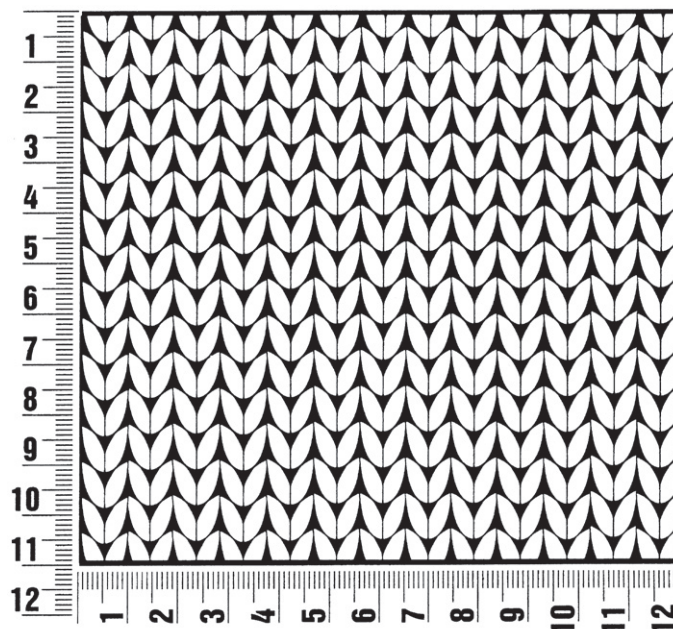


COAT

Gauge Swatch

Before you begin ...

...make a gauge swatch. Use the recommended needles, yarns and pattern stitch for your gauge swatch. It should measure approx. 12 cm x 12 cm. Cast-on and bind-off rows, as well as selvage stitches should not be included in the measurement. Pin your swatch and block it as you would the finished pieces of the garment. Count stitches and rows over 10 cm. If your gauge swatch is too small, switch to larger needles. If your gauge swatch is too big, switch to smaller needles.



Abbreviations

beg = begin(ning) · **ch** = chain · **cont** = continue · **dec** = decreas(e)(ing) · **inc** = increas(e)(ing) · **k** = knit · **kwise** = as if to knit
meas = measures · **M1L** = lift strand between sts from front to back and knit this strand through the back loop · **M1R** = lift strand between sts from the back and knit this strand through the front loop · **patt** = pattern · **pm** = place marker · **p** = purl
pwise = as if to purl · **rem** = remain(ing) · **rep** = repeat(s) · **rev St st** = reverse stockinette stitch · **rnd(s)** = round(s) · **RS** = right side · **sc** = single crochet · **skp** = slip 1 stitch as if to knit, knit 1 stitch, pass slipped stitch over knitted stitch · **sk2p** = slip 1 stitch as if to knit, knit 2 together, pass slipped stitch over knitted stitch · **s2kp** = slip 2 stitches as if to knit, k 1 stitch, pass slipped stitches over knitted stitch · **sl** = slip · **st(s)** = stitch(es) · **St st** = stockinette stitch · **tbl** = through the back loop · **tog** = together · **wyib** = with yarn in back of work · **wyif** = with yarn in front of work · **WS** = wrong side · **yo(s)** = yarn over(s)