

VEST

---



### VEST

**Size** 34/36 (38 – 42)

Instructions are given for smaller size. Figure in parenthesis refers to larger size. When only one figure is given, it applies to both sizes.

**Materials:** 600 (700) g of Lana Grossa **Weekend** (69% superfine Merino wool, 30% baby alpaca, 1% cotton; 35 m/100 g) in Natural (col 1). Size 20 mm needles.

**Selvage stitches:** On every row: Sl first st kwise, knit last st.

**Two-stitch selvage:** At beg of row, k1, sl 1 pwise wyif; at end of row, work to last 2 sts, k1, sl 1 pwise wyif.

**Garter st:** K every row.

**Gauge:** 6 sts and 10 rows = 10 x 10 cm in garter st on size 20 mm needles.

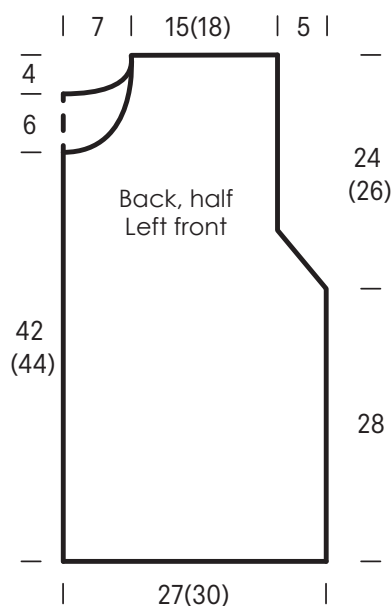
**Back:** With size 20 mm needles cast on 34 (38) sts. Beg and end with a WS row and working a selvage st at each edge, work in garter st until piece meas 28 cm from cast-on, ending with a WS row. Shape armholes: Next RS (dec) row: Two-stitch selvage, k2tog, knit to last 4 sts, k2tog, two-stitch selvage = 32 (36) sts. Maintaining two-stitch selvage at each

edge, cont in garter st, rep RS dec row 2 times = 28 (32) sts. Maintaining two-stitch selvage at each edge, cont in garter st until armhole meas 20 (22) cm, ending with a WS row. Shape neck: Next row (RS): Bind off center 8 sts. Working each side separately and working a single selvage st at neck edge, work even until piece meas 4 cm from beg of neck shaping. Bind off rem 10 (12) sts for each shoulder.

**Left front:** With size 20 mm needles cast on 17 (19) sts. Next row (WS): Two-stitch selvage, work in garter st to last st, selvage st. Maintaining selvage sts, cont in garter st until same length as back to armhole. Shape armhole at right edge same as for back = 14 (16) sts. Maintaining two-stitch selvage at each edge, cont in garter st until armhole meas 14 (16) cm, ending with a RS row. Shape neck: Working a single selvage st at neck edge, bind off 2 sts at beg of next WS row, 1 st at beg of next 2 WS rows = 10 (12) sts rem. Work even until armhole meas 24 (26) cm, ending with a WS row. Bind off rem 10 (12) shoulder sts.

**Right front:** Work same as left front, reversing all shaping and patt placement.

**Finishing:** Pin pieces to measurements and block. Sew shoulder and side seams.

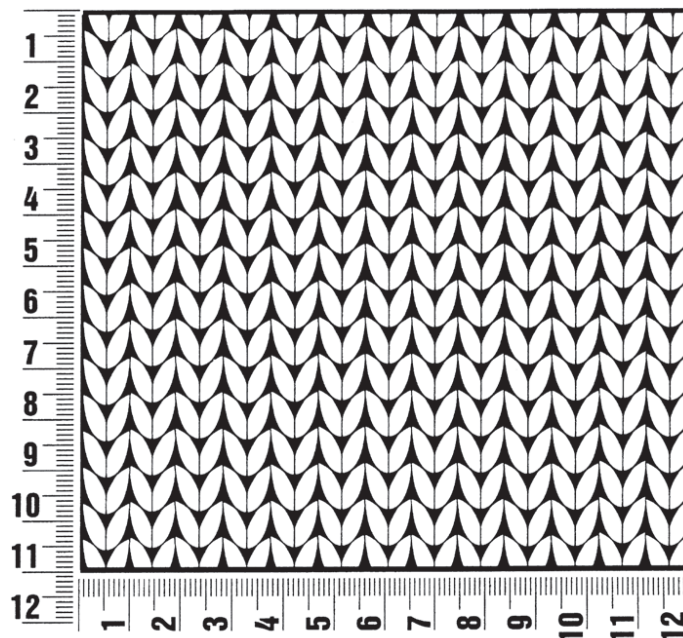


VEST

## Gauge Swatch

### Before you begin ...

...make a gauge swatch. Use the recommended needles, yarns and pattern stitch for your gauge swatch. It should measure approx. 12 cm x 12 cm. Cast-on and bind-off rows, as well as selvage stitches should not be included in the measurement. Pin your swatch and block it as you would the finished pieces of the garment. Count stitches and rows over 10 cm. If your gauge swatch is too small, switch to larger needles. If your gauge swatch is too big, switch to smaller needles.



## Abbreviations

**beg** = begin(ning) · **ch** = chain · **cont** = continue · **dec** = decreas(e)(ing) · **inc** = increas(e)(ing) · **k** = knit · **kwise** = as if to knit  
**meas** = measures · **M1L** = lift strand between sts from front to back and knit this strand through the back loop · **M1R** = lift strand between sts from the back and knit this strand through the front loop · **patt** = pattern · **pm** = place marker · **p** = purl  
**pwise** = as if to purl · **rem** = remain(ing) · **rep** = repeat(s) · **rev St st** = reverse stockinette stitch · **rnd(s)** = round(s) · **RS** = right side · **sc** = single crochet · **skp** = slip 1 stitch as if to knit, knit 1 stitch, pass slipped stitch over knitted stitch · **sk2p** = slip 1 stitch as if to knit, knit 2 together, pass slipped stitch over knitted stitch · **s2kp** = slip 2 stitches as if to knit, k 1 stitch, pass slipped stitches over knitted stitch · **sl** = slip · **st(s)** = stitch(es) · **St st** = stockinette stitch · **tbl** = through the back loop · **tog** = together · **wyib** = with yarn in back of work · **wyif** = with yarn in front of work · **WS** = wrong side · **yo(s)** = yarn over(s)