

LINEA PURA NO. 13

FILATI

Design 10

LONGLINE VEST



### LONGLINE VEST

**Size** 36 – 44 (46 – 50)

Instructions are given for smaller size. Figure in parenthesis refers to larger size. When only one figure is given, it applies to both sizes.

**Materials:** 650 (700) g of Lana Grossa **Cashseta** (40% Modal, 30% polyamide; 15% cashmere, 15% silk; 100 m/50 g) in Taupe (col 4). Size 6 mm needles.

**Openwork patt:** Work according to chart. Numbers at right edge of chart indicate RS rows, numbers at left edge of chart indicate WS rows. Work to patt rep, work 12 sts between arrows for patt rep, work to end of chart. Rep rows 1 – 8.

**St st:** K on RS, p on WS.

**Gauge:** 19 sts and 21.5 rows = 10 x 10 cm in openwork patt on size 6 mm needles.

**Back:** With size 6 mm needles cast on 110 (134) sts. Work in openwork patt according to chart for 104 rows and piece meas 48 cm from cast-on. Place marker in first and last st on last WS row to indicate beg of armholes. Cont in patt for 52 (56) rows and piece meas 24 (26) cm from armhole markers. Shape shoulders: Bind off 8 (10) sts at beg of next 2 rows, 7 (9) sts at beg of next 10 rows. Bind off rem 24 sts.

**Pocket lining:** Make 2. With size 6 mm needles cast on 30 sts. Work in St st for 17 cm, ending with a RS row. Place sts on holder, cut yarn.

**Left front:** With size 6 mm needles cast on 62 (74) sts. Work in openwork patt according to chart for 54 rows and piece meas 26 cm from cast-on. Next RS (pocket opening) row: Patt over 12 (24) sts, bind off 30 sts for pocket opening, patt to end. Next row (WS): Patt to bound-off sts, with WS of pocket lining facing, work openwork patt over 30 sts of lining, patt to end. Cont in patt across all sts until same length as back to armhole. Place armhole marker at right edge. Cont in patt until same length as back to shoulder. Shape shoulder: At beg of RS rows bind off 8 (10) sts 1 time, 7 (9) sts 5 times, patt to end of row = 19 sts rem for collar. Next row (WS): Patt to last st, selvage st (k on WS, sl kwise on RS). Cont in patt until collar meas 7 cm from last shoulder bind-off row, ending with a WS row. Place sts on holder.

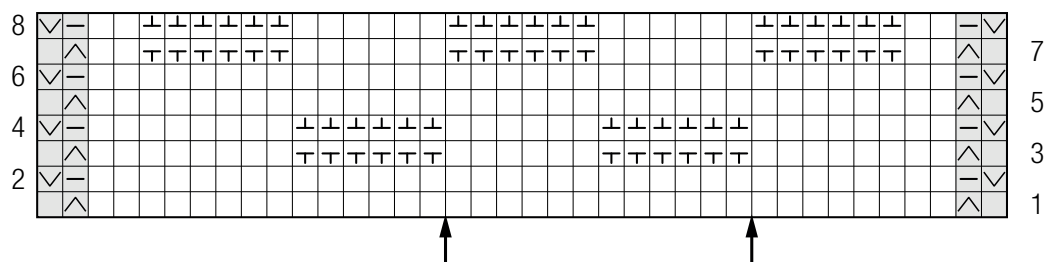
**Right front:** Work same as left front, reversing all shaping and patt placement.

**Finishing:** Pin pieces to measurements and block. Sew pocket linings in place on WS. Sew shoulder seams. Graft collar sts tog, then sew collar to back neck edge, matching \* to \* and • to • on schematic. Sew side seams to armhole markers, working 1 st in from edge. **Note:** Vest stretches in length by approx. 15 cm when worn.

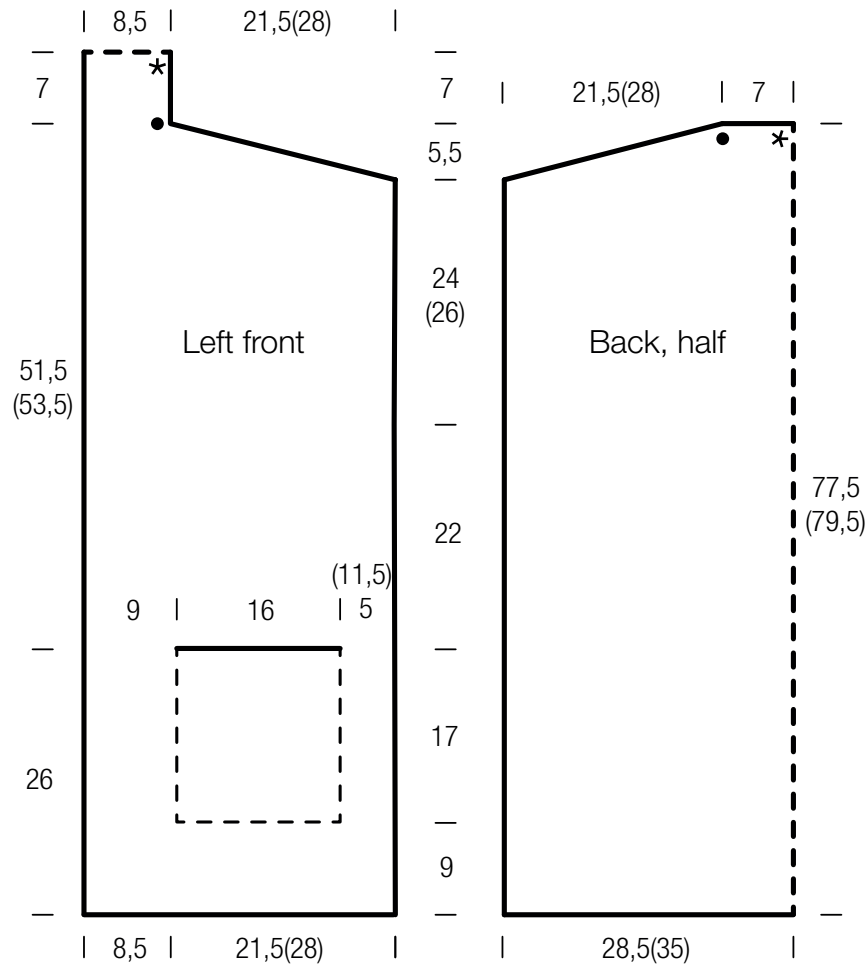
**Chart key:**

- = k1
- ▢ = p1
- ⊥ = bind off 1 st
- ⊥ = cast on 1 st
- ☑ = sl 1 pwise wyif
- ☒ = sl 1 pwise wyib

**Chart**



### LONGLINE VEST



## Abbreviations

**beg** = begin(ning) · **ch** = chain · **cont** = continue · **dec** = decreas(e)(ing) · **inc** = increas(e)(ing) · **k** = knit · **kwise** = as if to knit  
**meas** = measures · **M1L** = lift strand between sts from front to back and knit this strand through the back loop · **M1R** = lift strand between sts from the back and knit this strand through the front loop · **patt** = pattern · **pm** = place marker · **p** = purl  
**pwise** = as if to purl · **rem** = remain(ing) · **rep** = repeat(s) · **rev St st** = reverse stockinette stitch · **rnd(s)** = round(s) · **RS** = right side · **sc** = single crochet · **skp** = slip 1 stitch as if to knit, knit 1 stitch, pass slipped stitch over knitted stitch · **sk2p** = slip 1 stitch as if to knit, knit 2 together, pass slipped stitch over knitted stitch · **s2kp** = slip 2 stitches as if to knit, k 1 stitch, pass slipped stitches over knitted stitch · **sl** = slip · **st(s)** = stitch(es) · **St st** = stockinette stitch · **tbl** = through the back loop · **tog** = together · **wyib** = with yarn in back of work · **wyif** = with yarn in front of work · **WS** = wrong side · **yo(s)** = yarn over(s)