

CLASSICI NO. 18

FILATI

Design 27

PULLOVER



### PULLOVER

**Size** 36/38 (40/42, 44)

Instructions are given for first size. Figures in parenthesis refer to larger sizes. When only one figure is given, it applies to all sizes.

**Materials:** 350 (400, 450) g of Lana Grossa Alta Moda Cotelana (45% Merino wool, 45% Pima cotton, 10% polyamide; 150 m/50 g) in Greige (col 8). Size 5.5 mm needles; size 5.5 mm circular needle, 100 cm long; size 4.5 mm circular needle, 40 cm long.

**Main patt:** Work according to chart. Multiple of 2 + 1. Numbers at right edge of chart indicate RS rows; on WS rows, work sts as they appear. Rep rows 1 – 6.

**Two-stitch selvage:** On RS row, sl 1 pwise wyib, k1, patt to last 2 sts, k1, sl 1 pwise wyib. On WS row, p1, sl 1 pwise wyif, patt to last 2 sts, sl 1 pwise wyif, p1.

**Slip stitch selvage:** On RS row: K first and last st; on WS row: Sl first and last st pwise wyif.

**Gauge:** 12 sts and 35 rows = 10 x 10 cm in main patt on size 5.5 mm needles.

**Note:** Pullover is worked in one piece across shoulders, beginning at bottom edge of front. Front is 6 cm shorter than back.

**Front:** With size 5.5 mm needles cast on 73 (77, 81) sts. Knit 1 WS row. Working a two-stitch selvage at each edge, work in main patt according to chart for 6 cm, ending with a WS row. Next row (RS): K2tog, work in main patt as established to last 2 sts, k2tog = 71 (75, 79) sts. Working a slip st selvage at each edge, cont in main patt as established until piece meas 24 (25, 26) cm from cast-on, ending with a WS row. Shape sleeves: Work in patt, cast on 2 sts at beg of next 2 rows, [work 2 rows even, cast on 2 sts at beg of next 2 rows] 10 times, then cast on 2 sts at beg of next 6 rows, 12 sts at beg of next 2 rows = 151 (155, 159) sts. Work cast-on sts into patt, change to circular needle when necessary. Next row (RS): K1f&b, work in main patt as established to last st, k1f&b = 153 (157, 161) sts. Working a two-stitch selvage at each edge, cont in main patt as established until piece meas 39 (40, 41) cm from cast-on, ending with a WS row. Shape neck: Next row (RS): Patt over 67 (69, 71) sts and turn, leaving rem 86 (88, 90) sts on hold. Left front: Next row (WS): Bind off 2 sts, patt to end. Cont in patt, bind off 2 sts at beg of every alt WS row 2 times = 61 (63, 65) sts. Work even until piece meas 54 (55, 56) cm from cast-on, ending with a WS

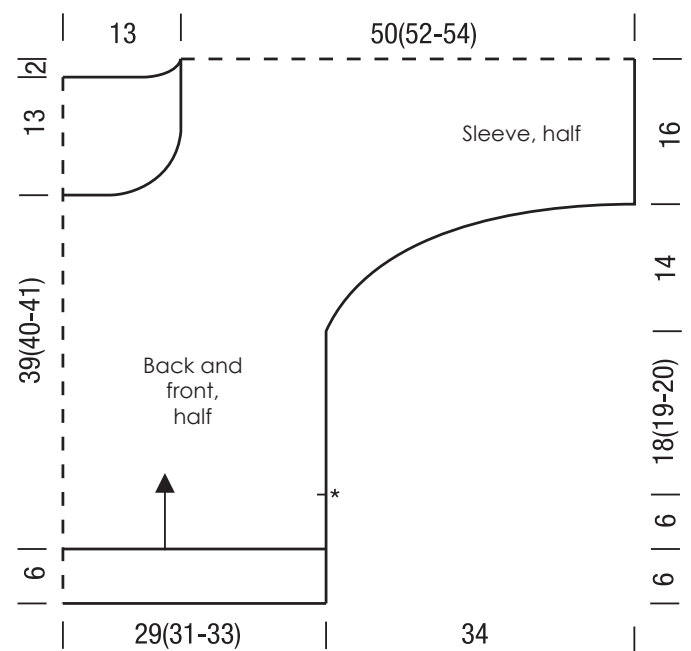
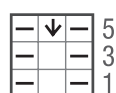
row. Place marker to indicate shoulder line. Work 3 rows even, ending with a RS row. Cont in patt, cast on 2 sts at beg of next 2 WS rows = 65 (67, 69) sts. Place sts on holder, do not cut yarn. Right front: With RS facing, join new ball of yarn, bind off 19 sts, patt to end. Complete as given for left front, reversing all shaping. Place sts on holder, cut yarn. Next RS (joining) row: Patt over 61 (63, 65) left front sts, cast on 23 sts for back neck, patt over 61 (63, 65) right front sts = 153 (157, 161) sts. Cont in patt across all sts until piece meas 16 cm from shoulder marker, ending with a WS row. Next row (RS): K2tog, work in main patt as established to last 2 sts, k2tog = 151 (155, 159) sts. Next row (WS): Slip st selvage work in main patt as established to last st, slip st selvage st. Maintaining selvage sts, cont in main patt and shape sleeves as foll: Bind off 12 sts at beg of next 2 rows, 2 sts at beg of next 6 rows, [work 2 rows even, bind off 2 sts at beg of next 2 rows] 11 times = 71 (75, 79) sts. Work even until piece meas 48 (49, 50) cm from shoulder marker, ending with a WS row. Next row (RS): K1f&b, work in main patt as established to last st, k1f&b = 73 (77, 81) sts. Working a two-stitch selvage at each edge, cont in main patt as established for 12 cm, ending with a chart row 5. Loosely bind off all sts kwise and at same time, k2tog first 2 sts and last 2 sts.

**Finishing:** Pin piece to measurements and block. Neckband: With size 4.5 mm circular needle, pick up and k 110 sts evenly around neck edge. Place beg of rnd marker and join for working in rnds. Knit 7 rnds. Bind off all sts. Sew side and sleeve seams, leaving bottom of side seams open for vents (see \* on schematic).

**Chart key:**

- = k1
- = p1
- = let st drop from left needle and unravel 4 rows down; insert right needle into dropped st and under floats, pull up loop

**Chart**



## PULLOVER

## GAUGE SWATCH

Before you begin knitting...

...make a gauge swatch. Use the recommended needles, yarns and pattern stitch for your gauge swatch. It should measure approx. 12 cm x 12 cm. Cast on and bind off rows, as well as selvage stitches should not be included in the measurement. Pin your swatch and block it as you would the finished pieces of the garment. Count stitches and rows over 10 cm. If your gauge swatch is too small, switch to larger needles. If your gauge swatch is too big, switch to smaller needles.

## ABBREVIATIONS

beg = begin(ning) · ch = chain · cont = continue · dec = decreas(e)(ing) · inc = increas(e)(ing) · k = knit · kwise = as if to knit  
meas = measures · M1L = lift strand between sts from front to back and knit this strand through the back loop · M1R = lift  
strand between sts from the back and knit this strand through the front loop · patt = pattern · pm = place marker · p = purl  
pwise = as if to purl · rem = remain(ing) · rep = repeat(s) · rev St st = reverse stockinette stitch · rnd(s) = round(s) · RS =  
right side · sc = single crochet · skp = slip 1 stitch as if to knit, knit 1 stitch, pass slipped stitch over knitted stitch · sk2p = slip  
1 stitch as if to knit, knit 2 together, pass slipped stitch over knitted stitch · s2kp = slip 2 stitches as if to knit, k 1 stitch, pass  
slipped stitches over knitted stitch · sl = slip · st(s) = stitch(es) · St st = stockinette stitch · tbl = through the back loop · tog =  
together · wyib = with yarn in back of work · wyif = with yarn in front of work · WS = wrong side · yo(s) = yarn over(s)