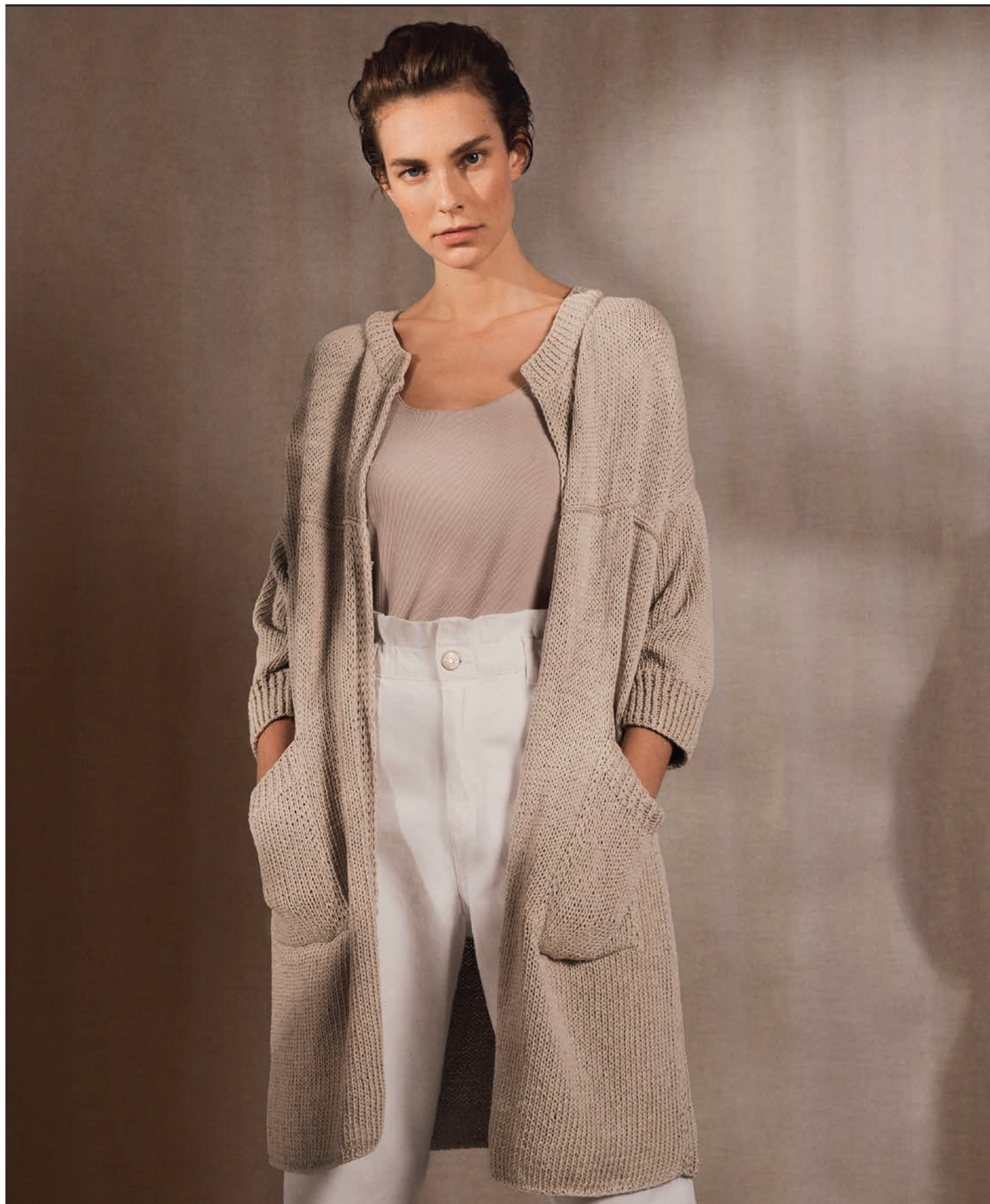


VEST



VEST

Size 36 – 40 (42 – 46) Instructions are given for smaller size. Figure in parenthesis refers to larger size. When only one figure is given, it applies to both sizes.

Materials: 700 (800) g of Lana Grossa **Certo** (100% GOTS cotton; 115 m/50 g) in Natural (**col 9**). Size 7 and 5 mm needles.

Rib patt: On RS row, k1tbl, p1; on WS row, k1, p1tbl.

St st: K on RS, p on WS.

Slip stitch rib: On RS row, p1, sl 1 pwise wyib; on WS row, p1, k1.

Two-stitch selvage: On RS row, sl 1 pwise wyif, k1, patt to last 2 sts, sl 1 pwise wyib, k1. On WS row, sl 1 pwise wyif, p1, patt to last 2 sts, sl 1 pwise wyif, k1.

Three-stitch selvage: On RS row, k1, sl 1 pwise wyib, p1, work to last 3 sts, p1, sl 1 pwise wyib, k1. On WS row, sl 1 pwise wyif, p1, k1, work to last 3 sts, k1, p1, sl 1 pwise wyif.

Decorative bind-off: * K1, k2tog tbl, sl both sts back to left needle; rep from * to last 4 sts, k2tog 2 times, pass first st over 2nd st. Cut yarn and draw through last st on needle.

Gauge: 17.5 sts and 24 rows = 10 x 10 cm in St st on size 7 mm needles.

Back: Worked in two halves first for center vent. **Left half:** With size 7 mm needles cast on 51 (55) sts. Next row (WS): * K1, p1tbl; rep from *, end k1. Next row (RS): Two-stitch selvage, work slip st rib over next 10 sts, work in St st to last 3 sts, three-stitch selvage. Maintaining selvage sts, work even in patt as established for 22 cm, ending with a WS row. Next row (RS): Three-stitch selvage, work in St st to last 3 sts, three-stitch selvage. Maintaining selvage sts, work even in St st until piece meas 63 cm from cast-on, ending with a WS row. Next row (RS): Work decorative bind-off. **Right half:** With size 7 mm needles cast on 61 (65) sts. Next row (WS): * K1, p1tbl; rep from *, end k1. Next row (RS): Three-stitch selvage, work in St st to last 12 sts; beg with sl 1 pwise wyib, work slip st rib over next 10 sts, two-stitch selvage. Maintaining selvage sts, work even in patt as established for 18 cm, ending with a RS row. Next row (WS): Bind off 10 sts, work to end = 51 (55) sts. Next row (RS): Three-stitch selvage, work in St st to last 3 sts, three-stitch selvage. Maintaining selvage sts, work even in St st until piece meas 63 cm from cast-on, ending with a WS row. Next row (RS): Work decorative bind-off. **Top of back:** Sew left and right half tog, leaving center vent open. With size 7 mm needles, RS facing and picking up back loop of sts only, pick up and k 102 (110) sts evenly in decorative bind-off. Next row (WS): Three-stitch selvage, work in St st to

last 3 sts, three-stitch selvage. Maintaining selvage sts, work even in St st for 19 (21) cm, shoulder edge bind off 6 sts 5 times, 7 sts 1 time (6 sts 2 times, 7 sts 4 times). At same time, when piece meas 3 cm from beg of shoulder shaping, shape neck as foll: Next row (RS): Bind off center 24 sts. Working each side separately, bind off 2 (3) sts at each neck edge 1 time.

Right front: With size 7 mm needles cast on 71 (75) sts. Next row (WS): * K1, p1tbl; rep from *, end k1. Next row (RS): Twostitch selvage; beg with p1, work slip st rib over next 10 sts, work in St st to last 3 sts, three-stitch selvage. Cont in patt as established until piece meas 63 cm from cast-on, ending with a WS row. Next row (RS): Work decorative bind-off. **Top of right front:** With size 7 mm needles, RS facing and picking up back loop of sts only, pick up and k 71 (75) sts evenly in decorative bind-off. Next row (WS): Three-stitch selvage, work in St st to last 12 sts, work slip st rib as established over next 10 sts, two-stitch selvage. Work in patt as established for 16 (18) cm, ending with a WS row. Shape neck: At beg of RS rows, bind off 21 (22) sts 1 time, 5 sts 1 time, 3 sts 1 time, 2 sts 2 times, 1 st 1 time and when same length as back to shoulder, shape shoulder at left edge same as for back.

Left front: Work same as right front, reversing all shaping and patt placement.

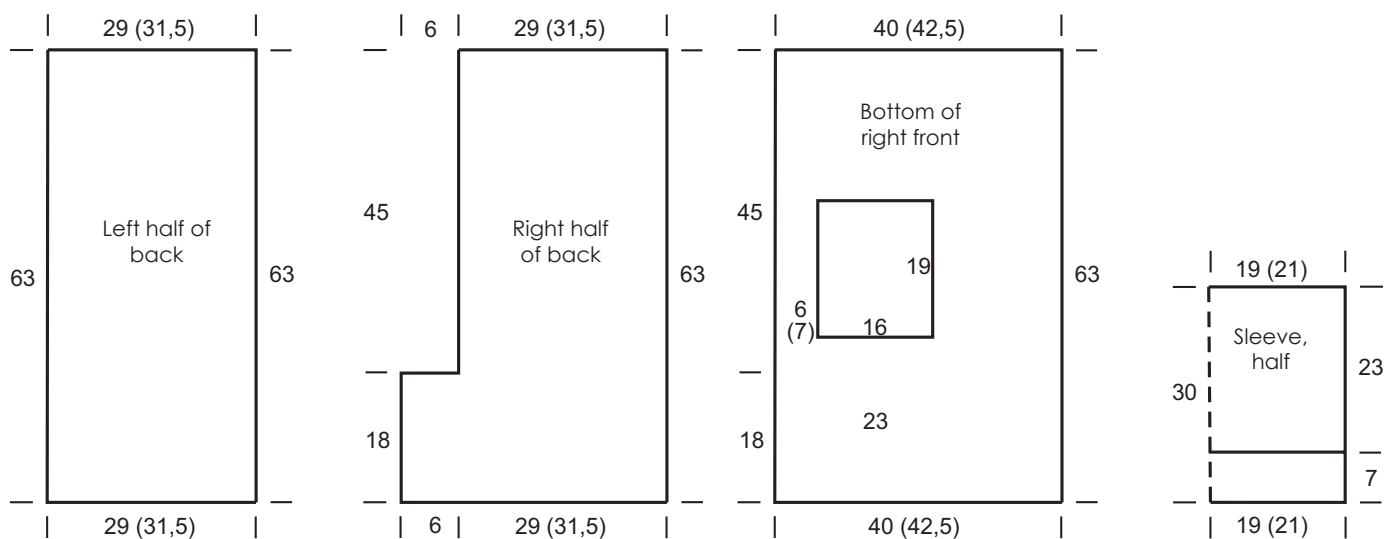
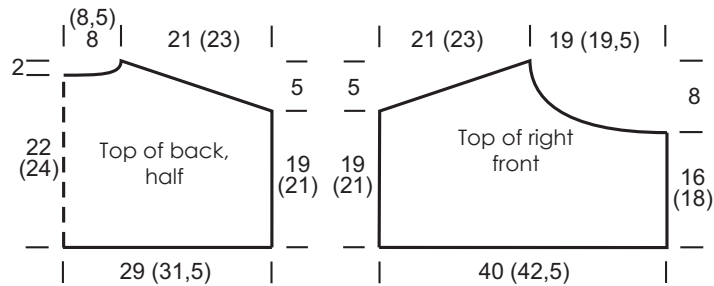
Sleeves: With size 5 mm needles cast on 65 (71) sts. Next row (WS): * K1, p1tbl; rep from *, end k1. Next row (RS): Three-stitch selvage, work in rib patt as established to last 3 sts, three-stitch selvage. Maintaining selvage sts, work even in rib patt until piece meas 7 cm from cast-on, ending with a WS row. Change to size 7 mm needles. Next row (RS): Three-stitch selvage, work in St st to last 3 sts, three-stitch selvage. Maintaining selvage sts, work even in St st until piece meas 30 cm from cast-on. Bind off all sts.

Pockets: Make 2. With size 7 mm needles cast on 31 sts. Purl 1 WS row. Next row (RS): Three-stitch selvage, work in St st to last 3 sts, three-stitch selvage. Maintaining selvage sts, work even in St st for 33 more rows, ending with a WS row. Change to size 5 mm needles. Next row (RS): Three-stitch selvage, * k1tbl, p1; rep from * to last 4 sts, k1tbl, three-stitch selvage. Maintaining selvage sts, work even in rib patt for 9 more rows. Bind off all sts.

Neckband: With size 5 mm needles cast on 115 (119) sts. Next row (WS): * P1tbl, k1; rep from *, end p1tbl. Cont in rib patt as established until piece meas 3 cm from cast-on. Bind off all sts.

Finishing: Referring to schematic for placement, sew pockets to fronts. Sew shoulder seams. Sew neckband to neck edge, easing to fit. Sew on sleeves. Sew side and sleeve seams.

VEST



GAUGE SWATCH

Before you begin knitting...

...make a gauge swatch. Use the recommended needles, yarns and pattern stitch for your gauge swatch. It should measure approx. 12 cm x 12 cm. Cast on and bind off rows, as well as selvage stitches should not be included in the measurement. Pin your swatch and block it as you would the finished pieces of the garment. Count stitches and rows over 10 cm. If your gauge swatch is too small, switch to larger needles. If your gauge swatch is too big, switch to smaller needles.

ABBREVIATIONS

beg = begin(ning) · **ch** = chain · **cont** = continue · **dec** = decreas(e)(ing) · **inc** = increas(e)(ing) · **k** = knit · **kwise** = as if to knit
meas = measures · **M1L** = lift strand between sts from front to back and knit this strand through the back loop · **M1R** = lift strand between sts from the back and knit this strand through the front loop · **patt** = pattern · **pm** = place marker · **p** = purl **pwise** = as if to purl · **rem** = remain(ing) · **rep** = repeat(s) · **rev St st** = reverse stockinette stitch · **rnd(s)** = round(s) · **RS** = right side · **sc** = single crochet · **skp** = slip 1 stitch as if to knit, knit 1 stitch, pass slipped stitch over knitted stitch · **sk2p** = slip 1 stitch as if to knit, knit 2 together, pass slipped stitch over knitted stitch · **s2kp** = slip 2 stitches as if to knit, k 1 stitch, pass slipped stitches over knitted stitch · **sl** = slip · **st(s)** = stitch(es) · **St st** = stockinette stitch · **tbl** = through the back loop · **tog** = together · **wyib** = with yarn in back of work · **wyif** = with yarn in front of work · **WS** = wrong side · **yo(s)** = yarn over(s)