

FILATI NO. 60

FILATI

Design 19

PULLOVER



### PULLOVER

**Size** 36 – 40 (42 – 46)

Instructions are given for smaller size. Figure in parenthesis refers to larger size. When only one figure is given, it applies to both sizes.

**Materials:** **325 (350) g** of Lana Grossa **Lala Berlin Lovely Cashmere** (60% cashmere, 25% polyamide, 15% Merino wool; 60 m/25 g) in **Petrol (col 17)**. Size 6.5, 7 and 8 mm needles; size 6 mm crochet hook.

**Selvage sts:** On every row: K first st, sl last st pwise wyif.

**Chart patt:** Numbers at right edge of chart indicate RS rows, numbers at left edge of chart indicate WS rows. On all WS rows not shown on chart work sts as they appear. Work to patt rep, work 6 sts between arrows for patt rep, work to end of chart. Rep rows 1 – 32. **NOTE:** Work rows 1 – 10, 14 – 27, 31 and 32 with size **7 mm needles**; work rows 11 – 13 and 28 – 30 with size **8 mm needles**.

**Gauge:** 14.5 sts and 16.5 rows = 10 x 10 cm in chart patt, changing needle sizes as instructed.

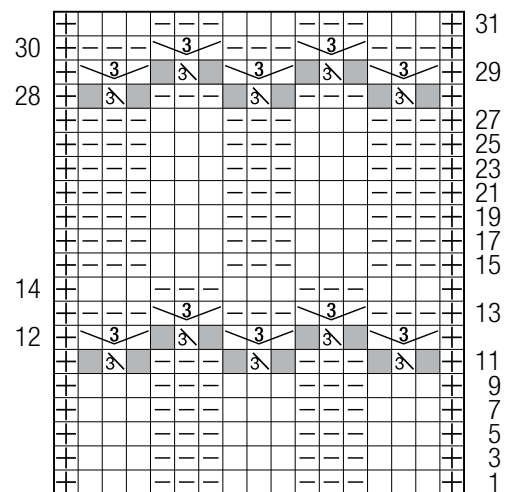
**Back:** With size 6.5 mm needles cast on 77 (83) sts. Work in chart patt for 4 rows. Change to size 7 mm needles. Cont in chart patt and remember to change needle sizes until a total of 50 (54) rows has been worked from cast-on and piece meas 30 (32) cm. Place marker in first and last st on last WS row to indicate beg of armholes. Cont in chart patt for 30 (32) rows and piece meas 18 (19) cm from armhole markers. Bind off all sts. Mark center 43 sts for neck.

**Front:** Work same as back.

**Sleeves:** With size 6.5 mm needles cast on 35 sts. Work in chart patt for 4 rows. Change to size 7 mm needles. Cont in chart patt, remember to change needle sizes and shape sleeve as foll: Inc 1 st at each end of 7th row from cast-on, then every 8th row 9 (3) times, then every 6th row 0 (8) times = 55 (59) sts. Work increased sts into patt. Cont in chart patt until a total of 86 rows has been worked from cast-on and piece meas 52 cm. Bind off all sts in patt.

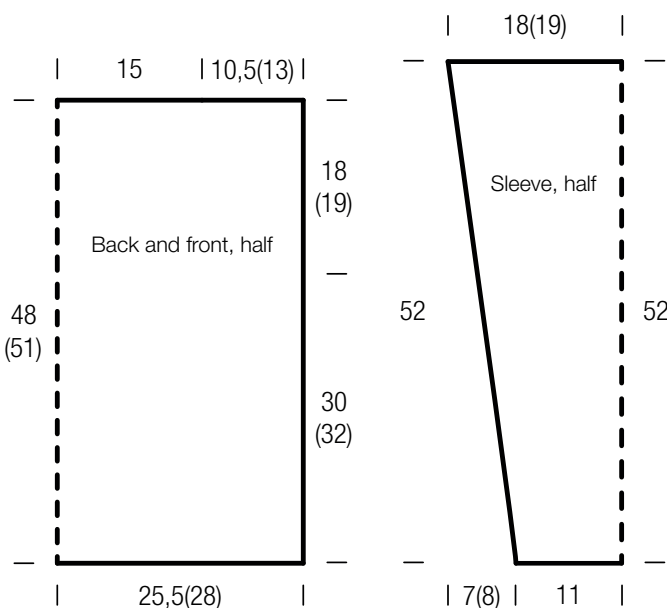
**Finishing:** Pin pieces to measurements and block. Sew shoulder seams. **Neck trim:** With size 6 mm crochet hook, sl st around neck edge. Sew on sleeves between markers. Sew side and sleeve seams.

**Chart**



**Chart key:**

- ⊕ = selvage st
- = k1
- ▬ = p1
- ⊗ = sk2p: sl 1 kwise, k2tog, pass slipped st over knitted st
- = represents "no stitch" (included to keep st count correct)
- ⊞ = k1, p1, k1 in next st

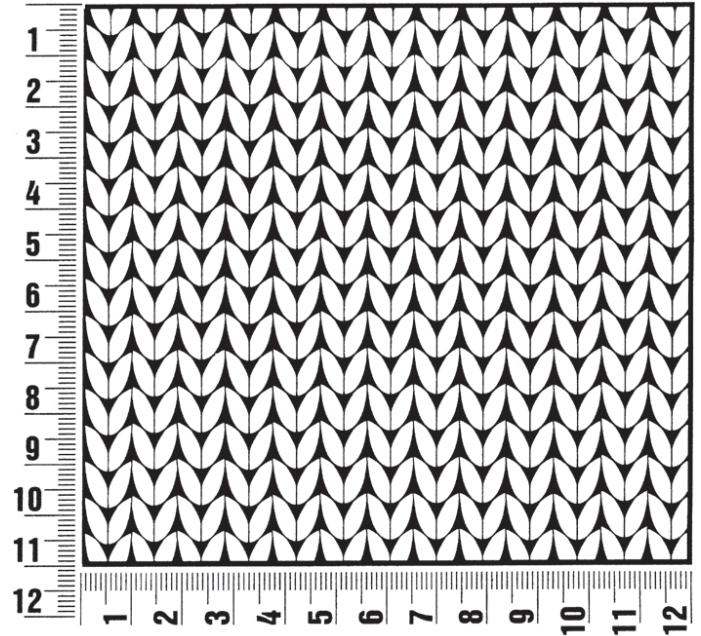


PULLOVER

## Gauge Swatch

### Before you begin ...

...make a gauge swatch. Use the recommended needles, yarns and pattern stitch for your gauge swatch. It should measure approx. 12 cm x 12 cm. Cast-on and bind-off rows, as well as selvage stitches should not be included in the measurement. Pin your swatch and block it as you would the finished pieces of the garment. Count stitches and rows over 10 cm. If your gauge swatch is too small, switch to larger needles. If your gauge swatch is too big, switch to smaller needles.



## Abbreviations

**beg** = begin(ning) · **ch** = chain · **cont** = continue · **dec** = decreas(e)(ing) · **inc** = increas(e)(ing) · **k** = knit · **kwise** = as if to knit  
**meas** = measures · **M1L** = lift strand between sts from front to back and knit this strand through the back loop · **M1R** = lift strand between sts from the back and knit this strand through the front loop · **patt** = pattern · **pm** = place marker · **p** = purl  
**pwise** = as if to purl · **rem** = remain(ing) · **rep** = repeat(s) · **rev St st** = reverse stockinette stitch · **rnd(s)** = round(s) · **RS** = right side · **sc** = single crochet · **skp** = slip 1 stitch as if to knit, knit 1 stitch, pass slipped stitch over knitted stitch · **sk2p** = slip 1 stitch as if to knit, knit 2 together, pass slipped stitch over knitted stitch · **s2kp** = slip 2 stitches as if to knit, k 1 stitch, pass slipped stitches over knitted stitch · **sl** = slip · **st(s)** = stitch(es) · **St st** = stockinette stitch · **tbl** = through the back loop · **tog** = together · **wyib** = with yarn in back of work · **wyif** = with yarn in front of work · **WS** = wrong side · **yo(s)** = yarn over(s)