

FILATI NO. 60

FILATI

Design 39

PULLOVER



PULLOVER

Size 36 – 40 (42 – 46)

Instructions are given for smaller size. Figure in parenthesis refers to larger size. When only one figure is given, it applies to both sizes.

Materials: 350 (400) g of Lana Grossa **Piuma** (75% Merino wool, 15% baby alpaca, 10% polyamide; 140 m/50 g) in Turquoise/Grey Turquoise/Petrol (**col 20**). Size 7.5 and 8 mm needles; size 7.5 mm circular needle, 50 cm long; tapestry needle.

Selvage sts: On every row: K first st, sl last st pwise wyif.

Rib patt: K1, p1.

St st: K on RS, p on WS.

Staggered eyelets: Work according to chart. Numbers at right edge of chart indicate RS rows; on WS rows purl all sts and yos. Begin with selvage st, work sts between arrow **a** and **d** (**b** and **e**) once, end with selvage st. Work rows 1 – 60 once.

Full-fashion decrease: At beg of RS row, selvage st, k2tog; at end of RS row, work to last 3 sts, skp, selvage st.

Full-fashion increase: On RS row: M1R, 2 sts in from each edge.

Gauge: 12 sts and 18 rows = 10 x 10 cm in St st and staggered eyelets on size 8 mm needles.

Back: With size 7.5 mm needles cast on 69 (75) sts. Beg and end with a WS row work in rib patt for 9 cm. Change to size 8 mm needles. Work in St st for 32 (34) cm. Place marker at each edge to indicate beg of armholes. Cont in St st until piece meas 19 (20) cm from armhole markers, ending with a WS row. Shape shoulders: At each shoulder edge bind off 4 sts 3 (6) times, 3 sts 3 (0) times. Bind off rem 27 sts.

Front: Work same as back to end of rib patt. Work rows 1 – 60 of staggered eyelet chart and at same time, when piece meas 23 (25) cm from end of rib patt, place marker at each edge to indicate beg of armholes (note that front meas 9 cm shorter than back). After end of staggered eyelet chart, work in St st across all sts and when piece meas 15 (16) cm from armhole markers, shape neck as foll: Next row (RS): Bind off center 13 sts. Working each side separately, bind off 3 sts at each neck edge 1 time; working full-fashion dec, dec 1 st at each neck edge every RS row 4 times. At same time, when piece meas 19 (20) cm from markers, shape shoulders same as for back. No sts rem.

Sleeves: With size 7.5 mm needles cast on 28 (30) sts. Beg and end with a WS row work in rib patt for 9 cm, increasing 4 sts evenly across last WS row = 32 (34) sts. Change to size 8 mm needles. Work in St st and shape sleeve as foll: Working full-fashion inc, inc 1 st at each end of 3rd row, then every 8th row 7 times = 48 (50) sts. Cont in St st until piece meas 36 cm from end of rib patt. Bind off all sts.

Finishing: Pin pieces to measurements and block. Sew shoulder seams. **Neckband:** With size 7.5 mm circular needle, pick up and k 62 sts evenly around neck edge. Place beg of rnd marker and join for working in rnds. Purl 1 rnd. Work rib patt in rnds for 3 cm. Bind off all sts in rib. Sew on sleeves between markers. Sew side and sleeve seams, leaving bottom of side seams open for side vents [see * on schematic]. * Thread tapestry needle with 2 strand of yarn, each strand approx. 80 cm long. Using photos A – C as guide, embroider bottom eyelet row as foll: Insert threaded needle from bottom to top through eyelets [A], then from right to left through eyelets [B]. Leave long tail at beg and end of eyelet row. Knot ends to secure tails to fabric [C]. Rep from * for rem eyelet rows.



PULLOVER

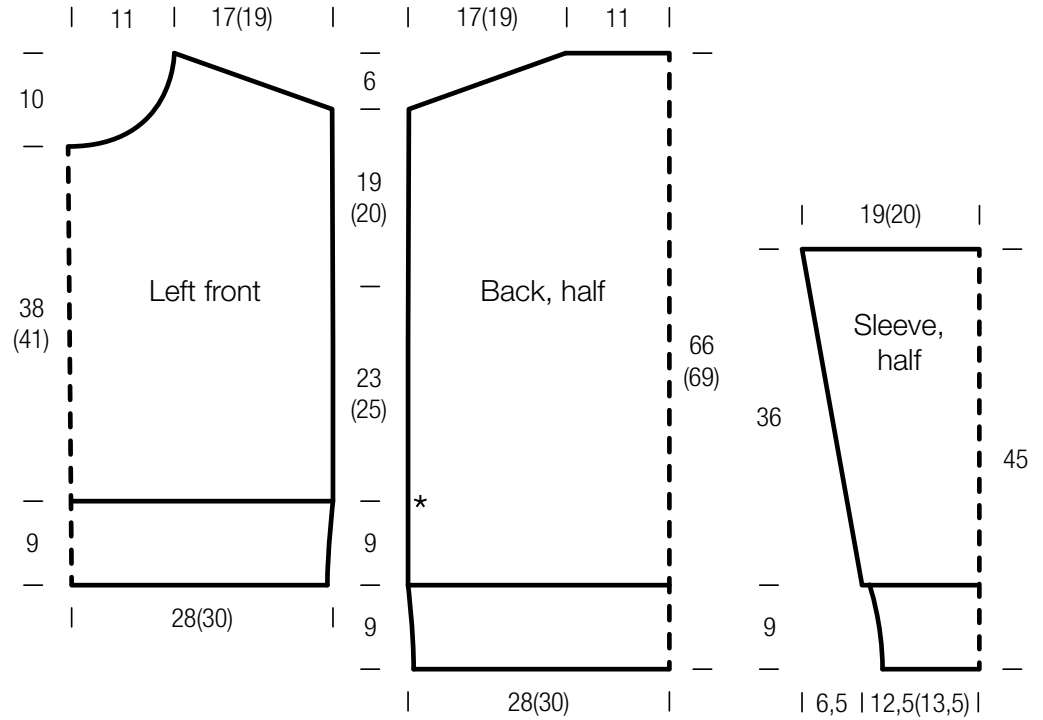
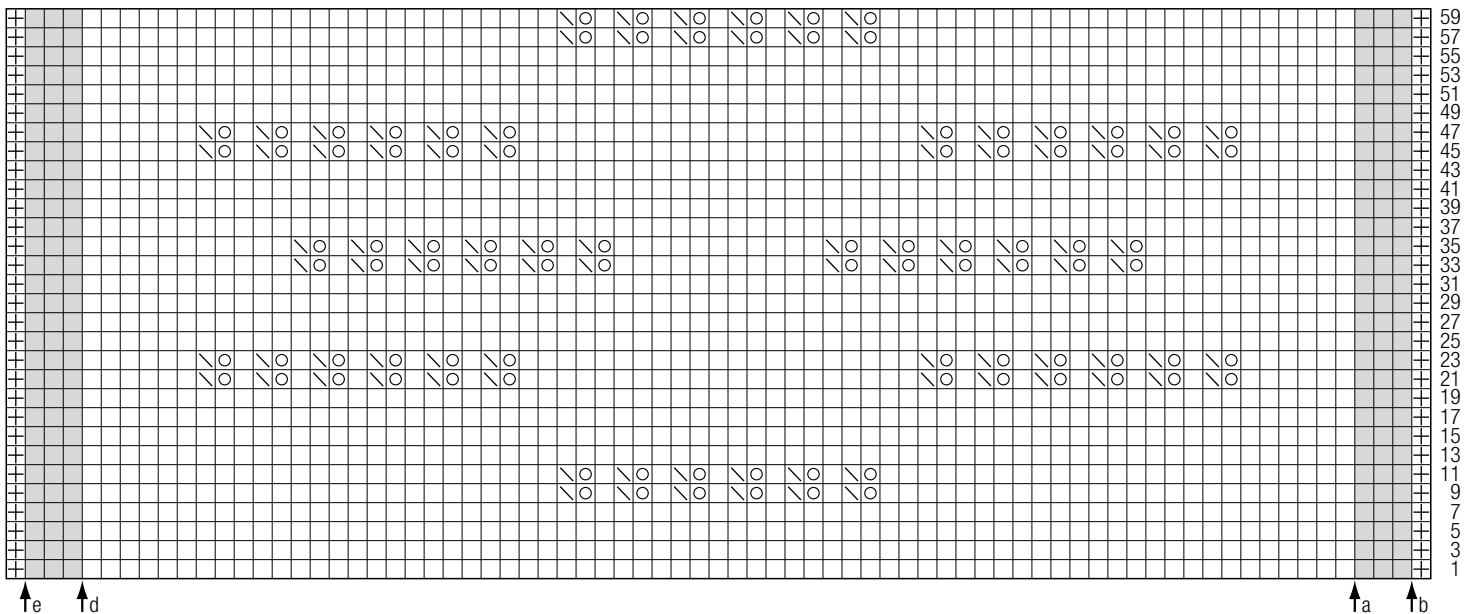


Chart key:

- ⊕ = selvage st
- = k1
- = yo
- ⊞ = skp: sl 1 kwise, k1, pass slipped st over knitted st

Chart

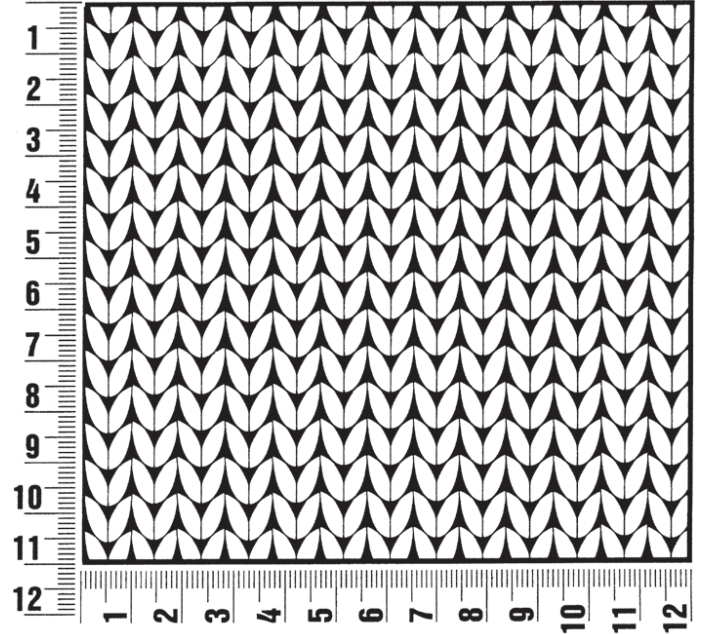


PULLOVER

Gauge Swatch

Before you begin ...

...make a gauge swatch. Use the recommended needles, yarns and pattern stitch for your gauge swatch. It should measure approx. 12 cm x 12 cm. Cast-on and bind-off rows, as well as selvage stitches should not be included in the measurement. Pin your swatch and block it as you would the finished pieces of the garment. Count stitches and rows over 10 cm. If your gauge swatch is too small, switch to larger needles. If your gauge swatch is too big, switch to smaller needles.



Abbreviations

beg = begin(ning) · **ch** = chain · **cont** = continue · **dec** = decreas(e)(ing) · **inc** = increas(e)(ing) · **k** = knit · **kwise** = as if to knit
meas = measures · **M1L** = lift strand between sts from front to back and knit this strand through the back loop · **M1R** = lift strand between sts from the back and knit this strand through the front loop · **patt** = pattern · **pm** = place marker · **p** = purl
pwise = as if to purl · **rem** = remain(ing) · **rep** = repeat(s) · **rev St st** = reverse stockinette stitch · **rnd(s)** = round(s) · **RS** = right side · **sc** = single crochet · **skp** = slip 1 stitch as if to knit, knit 1 stitch, pass slipped stitch over knitted stitch · **sk2p** = slip 1 stitch as if to knit, knit 2 together, pass slipped stitch over knitted stitch · **s2kp** = slip 2 stitches as if to knit, k 1 stitch, pass slipped stitches over knitted stitch · **sl** = slip · **st(s)** = stitch(es) · **St st** = stockinette stitch · **tbl** = through the back loop · **tog** = together · **wyib** = with yarn in back of work · **wyif** = with yarn in front of work · **WS** = wrong side · **yo(s)** = yarn over(s)