

PULLOVER



PULLOVER

Size 36/38 (40/42, 44/46, 48) Instructions are given for first size. Figures in parenthesis refer to larger sizes. When only one figure is given, it applies to all sizes.

Materials: 700 (750, 800, 850) g of Lana Grossa **About Berlin Bulky** (50% cotton, 50% Micromodal; 47 m/50 g) in Greige (col 12). Size 9 and 10 mm needles; one set size 9 mm double-pointed needles [dpns].

Rib patt in rows: Multiple of 2 + 1 + 4 selvage sts. **Row 1 (WS):** Two-stitch selvage, * k1, p1tbl; rep from * to last 3 sts, k1, two-stitch selvage. **Row 2 (RS):** Two-stitch selvage, * p1, k1tbl; rep from * to last 3 sts, p1, two-stitch selvage. Rep rows 1 and 2 for rib patt.

Rib patt in rnds: Multiple of 2. * P1, k1tbl; rep from * around.

St st: K on RS, p on WS.

Rev St st: P on RS, k on WS.

Chart patt: Numbers at right edge of chart indicate RS rows; on WS work sts as they appear, purl all yos.

Two-stitch selvage: On RS row, sl 1 pwise wyib, k1, patt to last 2 sts, k1, sl 1 pwise wyib. On WS row, p1, sl 1 pwise wyif, patt to last 2 sts, sl 1 pwise wyif, p1.

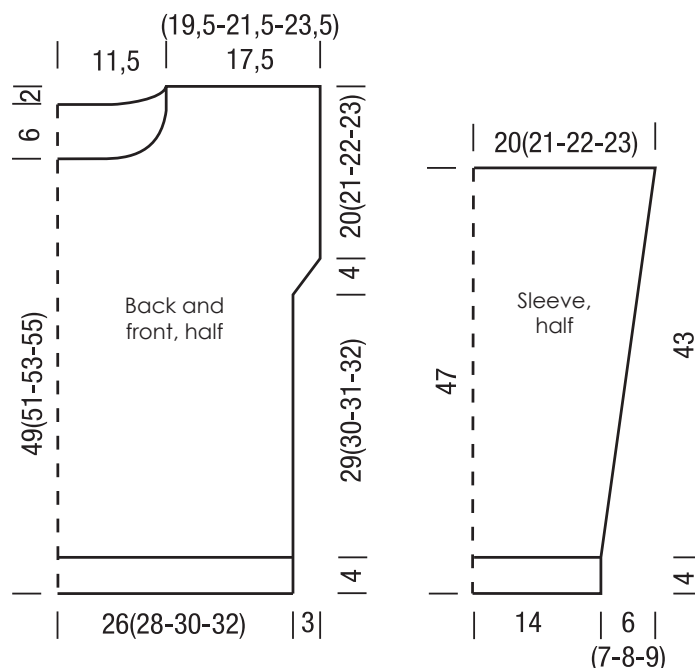
Full-fashion increase: On RS row: M1L or M1R as needed for patt, 3 sts in from each edge.

Back: With size 9 mm needles cast on 53 (57, 61, 65) sts. Beg and end with a WS row, work in rib patt for 4 cm, decreasing 1 st at center of last WS row = 52 (56, 60, 64) sts. Change to size 10 mm needles. Next row (RS): Twostitch selvage, 1 st in rev St st, 0 (2, 4, 6) sts in St st, chart patt over next 46 sts, 0 (2, 4, 6) sts in St st, 1 st in rev St st, two-stitch selvage. Work in patt as set by last row, rep chart rows 1 – 20, until piece meas 33 (34, 35, 36) cm from caston, ending with a WS row. Shape underarm: Working full-fashion inc, inc 1 st at each end of next RS row = 54 (58, 62, 66) sts. Work increased sts in rev St st. Rep RS inc row 2 more times = 58 (62, 66, 70) sts. Work sts increased on last 2 RS rows in St st. Work even until piece meas 55 (57, 59, 61) cm from cast-on, ending with a WS row. Shape neck: Next row (RS): Bind off center 18 sts. Working each side separately, bind off 2 sts at each neck edge 1 time and when piece meas 2 cm from beg of neck shaping, bind off rem 18 (20, 22, 24) sts for each shoulder.

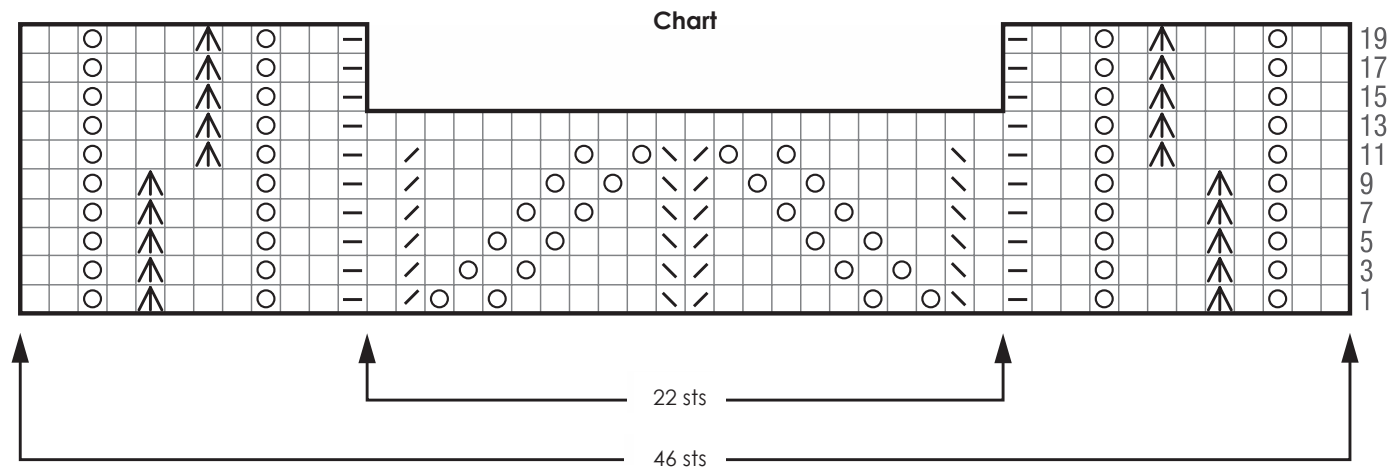
Front: Work same as back until piece meas 49 (51, 53, 55) cm from cast-on, ending with a WS row. Shape neck: Next row (RS): Bind off center 10 sts. Working each side separately, bind off 2 sts at each neck edge 2 times, 1 st 2 times and when same length as back to shoulders, bind off rem 18 (20, 22, 24) sts for each shoulder.

Sleeves: With size 9 mm needles cast on 29 sts. Beg and end with a WS row, work in rib patt for 4 cm, decreasing 1 st at center of last WS row = 28 sts. Change to size 10 mm needles. Next row (RS): Two-stitch selvage, 1 st in rev St st, chart patt over next 22 sts = center 22 sts of chart, 1 st in rev St st, two-stitch selvage. Work in patt as set by last row, rep chart rows 1 – 14, and shape sleeve as foll: Working full-fashion inc, inc 1 st at each end of 11 (9, 7, 7)th row from rib patt, then every 8th row 5 times (then every 8th row 5 times, then every 6th row 1 time / then every alt 6th and 8th row 7 times / then every 6th row 8 times) = 40 (42, 44, 46) sts. Work increased sts in St st. Work even until piece meas 47 cm from cast-on. Bind off all sts.

Finishing: Pin pieces to measurements and block. Sew shoulder seams. **Neckband:** With size 9 mm dpns, cast on 62 sts. Arrange sts evenly on 4 needles = 15-16-15-16 sts per needle, place beg of rnd marker and join for working in rnds. Work rib patt in rnds for 4 cm. Loosely bind off all sts. Sew bound-off edge of band to neck edge, easing to fit. Sew on sleeves. Sew side and sleeve seams. Sew all seams 1 st in from edge.



PULLOVER

**Chart key:**

- = k1
- ◻ = p1
- ⊗ = yo
- ⌢ = k2tog
- ⊞ = skp: sl 1 kwise, k1, pass slipped st over knitted st
- ⌢⌢ = s2kp: sl 2 kwise, k1, pass slipped sts over knitted st

GAUGE SWATCH

Before you begin knitting...

...make a gauge swatch. Use the recommended needles, yarns and pattern stitch for your gauge swatch. It should measure approx. 12 cm x 12 cm. Cast on and bind off rows, as well as selvage stitches should not be included in the measurement. Pin your swatch and block it as you would the finished pieces of the garment. Count stitches and rows over 10 cm. If your gauge swatch is too small, switch to larger needles. If your gauge swatch is too big, switch to smaller needles.

ABBREVIATIONS

beg = begin(ning) · **ch** = chain · **cont** = continue · **dec** = decreas(e)(ing) · **inc** = increas(e)(ing) · **k** = knit · **kwise** = as if to knit
meas = measures · **M1L** = lift strand between sts from front to back and knit this strand through the back loop · **M1R** = lift strand between sts from the back and knit this strand through the front loop · **patf** = pattern · **pm** = place marker · **p** = purl · **pwise** = as if to purl · **rem** = remain(ing) · **rep** = repeat(s) · **rev St st** = reverse stockinette stitch · **rnd(s)** = round(s) · **RS** = right side · **sc** = single crochet · **skp** = slip 1 stitch as if to knit, knit 1 stitch, pass slipped stitch over knitted stitch · **sk2p** = slip 1 stitch as if to knit, knit 2 together, pass slipped stitch over knitted stitch · **s2kp** = slip 2 stitches as if to knit, k 1 stitch, pass slipped stitches over knitted stitch · **sl** = slip · **st(s)** = stitch(es) · **St st** = stockinette stitch · **tbl** = through the back loop · **tog** = together · **wyib** = with yarn in back of work · **wyif** = with yarn in front of work · **WS** = wrong side · **yo(s)** = yarn over(s)