

LINEA PURA NO. 14

FILATI

Design 27

PULLOVER



PULLOVER

Size One size

Materials: 450 g of Lana Grossa **Fourseason** (45% superfine organic Merino wool, 40% organic cotton, 15% recycled cashmere; 105 m/50 g) in Light Blue (col 1). Size 4.5 and 5 mm needles.

Two-stitch selvage: On RS row, k1, sl 1 pwise wyib, work to last 2 sts, sl 1 pwise wyib, k1. On WS row, sl 1 pwise wyif, p1, work to last 2 sts, p1, sl 1 pwise wyif.

Rib patt: K1, p1.

St st: K on RS, p on WS.

Rev St st: P on RS, k on WS.

Eyelet patt: Work according to chart. Numbers at left edge of chart indicate WS rows, numbers at right edge of chart indicate RS rows. Chart begins with a WS row. Two-stitch selvage is shown in grey on chart. Work to patt rep, work 8 sts between arrows for patt rep, work to end of chart. Work rows 1 – 33 once, then rep rows 2 – 33.

Full-fashion increase: On RS row: M1R, 3 sts in from edge.

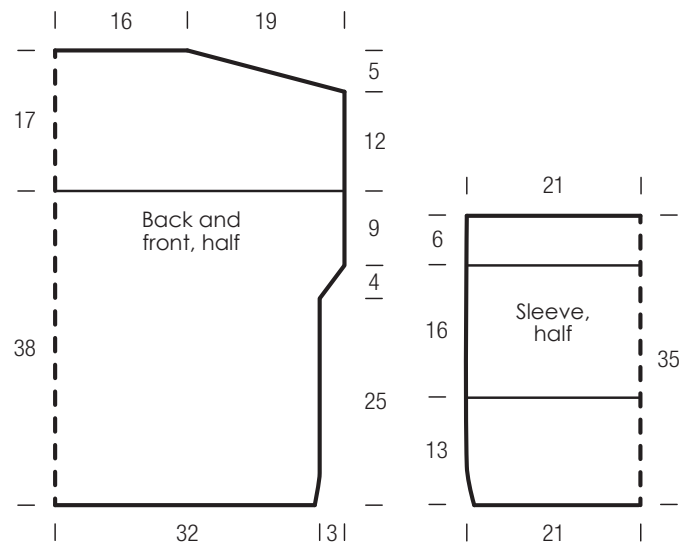
Gauge: 17 sts and 25 rows = 10 x 10 cm in St st and eyelet patt on size 5 mm needles.

Back: With size 4.5 mm needles cast on 109 sts. Beg with a WS row, work according to chart for 4 rows. Change to size 5 mm needles. Cont to foll chart until a total of 63 rows = 25 cm has been worked from cast-on. Shape underarm: Working full-fashion inc, inc 1 st at each end of next 5 RS rows = 119 sts. Work increased sts into patt. Cont in patt for 23 rows and piece meas 9 cm from last inc row. Next row (RS): Two-stitch selvage, 1 st in rev St st, work in St st to last 3 sts, 1 st in rev St st, two-stitch selvage. Work in patt as set by last row for a total of 30 rows = 12 cm. Shape shoulders: At each shoulder edge bind off 6 sts 2 times, 5 sts 4 times. bind off rem 55 sts.

Front: Work same as back.

Sleeves: With size 4.5 mm needles cast on 75 sts. Next row (WS): Work in rib patt. Next row (RS): Two-stitch selvage, 1 st in rev St st, work in St st to last 3 sts, 1 st in rev St st, two-stitch selvage. Work in patt as set by last row for a total of 3 rows. Change to size 5 mm needles. Cont in patt until a total of 33 rows = 13 cm has been worked from cast-on. Work rows 10 – 33 of chart, then work rows 18 – 33 of chart. NOTE: When working chart rows 10 and 16, omit 4th st and 4th to last st. When working chart rows 26 and 32, omit 3rd and 3rd to last st. Next row (RS): Two-stitch selvage, 1 st in rev St st, work in St st to last 3 sts, 1 st in rev St st, two-stitch selvage. Work in patt as set by last row for a total of 16 rows = 6 cm. Loosely bind off all sts.

Finishing: Pin pieces to measurements and block. Sew shoulder seams. Sew on sleeves. Sew side and sleeve seams. Sew all seams 1 st in from edge.



GAUGE SWATCH

Before you begin knitting...

...make a gauge swatch. Use the recommended needles, yarns and pattern stitch for your gauge swatch. It should measure approx. 12 cm x 12 cm. Cast on and bind off rows, as well as selvage stitches should not be included in the measurement. Pin your swatch and block it as you would the finished pieces of the garment. Count stitches and rows over 10 cm. If your gauge swatch is too small, switch to larger needles. If your gauge swatch is too big, switch to smaller needles.

ABBREVIATIONS

beg = begin(ning) · **ch** = chain · **cont** = continue · **dec** = decomp(e)(ing) · **inc** = increas(e)(ing) · **k** = knit · **kwise** = as if to knit
meas = measures · **M1L** = lift strand between sts from front to back and knit this strand through the back loop · **M1R** = lift strand between sts from the back and knit this strand through the front loop · **patt** = pattern · **pm** = place marker · **p** = purl **pwise** = as if to purl · **rem** = remain(ing) · **rep** = repeat(s) · **rev St st** = reverse stockinette stitch · **rnd(s)** = round(s) · **RS** = right side · **sc** = single crochet · **skp** = slip 1 stitch as if to knit, knit 1 stitch, pass slipped stitch over knitted stitch · **sk2p** = slip 1 stitch as if to knit, knit 2 together, pass slipped stitch over knitted stitch · **s2kp** = slip 2 stitches as if to knit, k 1 stitch, pass slipped stitches over knitted stitch · **sl** = slip · **st(s)** = stitch(es) · **St st** = stockinette stitch · **tbl** = through the back loop · **tog** = together · **wyib** = with yarn in back of work · **wyif** = with yarn in front of work · **WS** = wrong side · **yo(s)** = yarn over(s)

PULLOVER

Chart

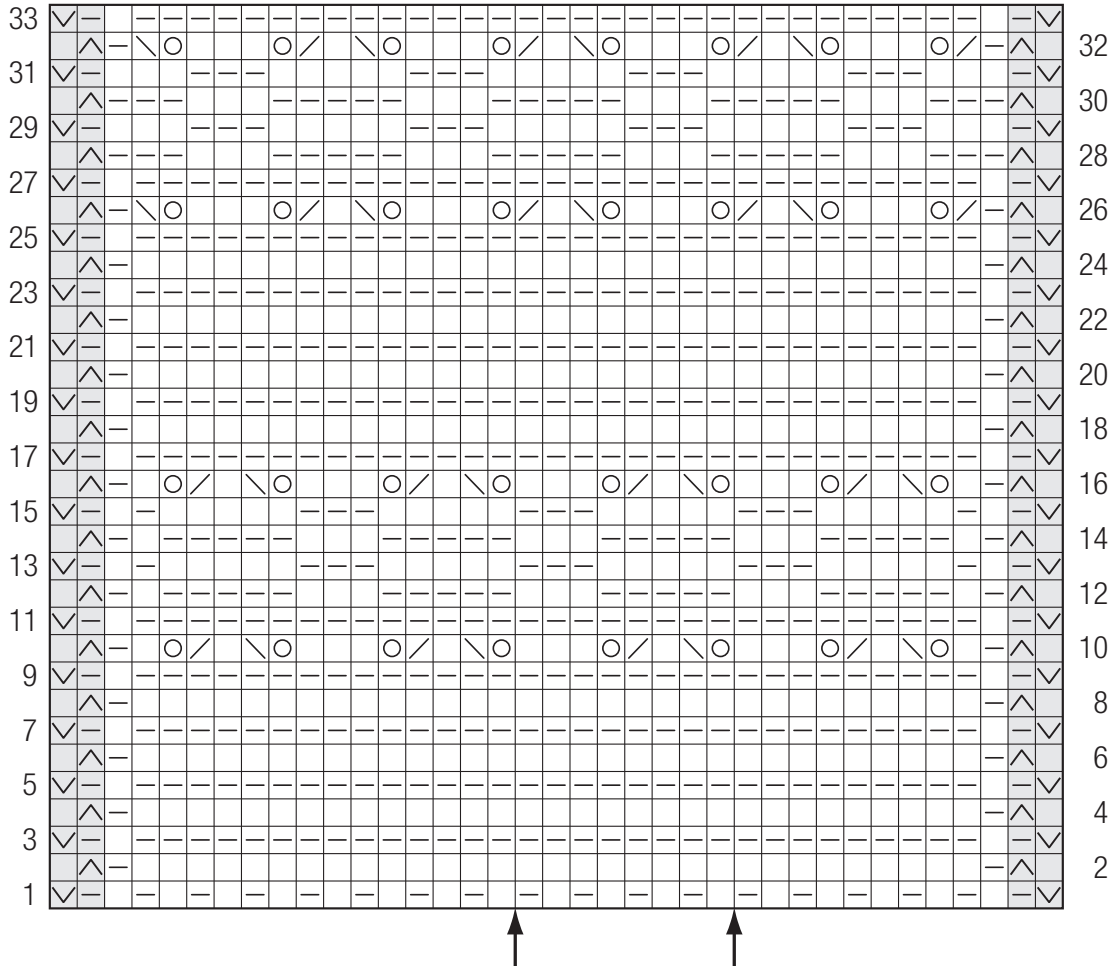


Chart key:

- = k1
- ▢ = p1
- ⊙ = yo
- ⊞ = k2tog
- ⊞ = skp: sl 1 kwise, k1, pass slipped st over knitted st
- ☑ = sl 1 pwise wyif
- ⊞ = sl 1 pwise wyib