

CLASSICI NO. 20

FILATI

Design 10

CARDIGAN



## CARDIGAN

**Size** 36/38 (40/42, 44/46) Instructions are given for first size. Figures in parenthesis refer to larger sizes. When only one figure is given, it applies to all sizes.

**Materials:** 400 (450, 500) g of Lana Grossa **Allora** (76% cotton, 14% superfine Merino wool, 10% baby alpaca; 300 m/50 g) in Pearl White (**col 13**). Size 3 and 3.5 mm needles; size 3.5 mm circular needle, 120 cm long; size 3 mm crochet hook.

**Rib patt:** P2, k2. St st: K on RS, p on WS.

**Main patt:** Multiple of 4. Numbers at right edge of chart indicate RS rows; on WS rows purl all sts. Rep rows 1 – 8 for main patt.

**Full-fashion decrease:** At beg of RS row, selvage st, skp; at end of RS row, work to last 3 sts, k2tog, selvage st.

**Full-fashion increase:** On RS row: M1R, 2 sts in from edge.

**Gauge:** 24 sts and 37 rows = 10 x 10 cm in main patt on size 3.5 mm needles.

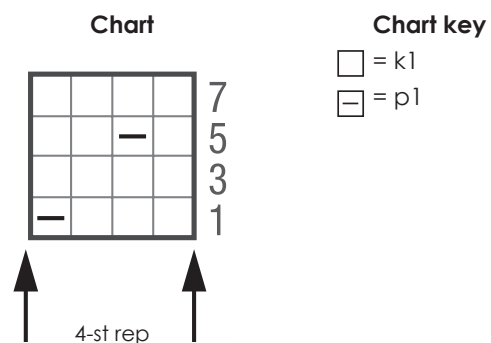
**Back:** With size 3.5 mm needles cast on 150 (158, 162) sts. Next row (RS): Selvage st (k on RS, p on WS), work main patt according to chart to last st = 37 (39, 40) patt reps, selvage st (k on RS, p on WS). Maintaining selvage sts, cont to foll chart until piece meas 84 cm from cast-on, ending with a WS row. Shape shoulders and neck: At each shoulder edge bind off 4 sts 1 time, then 4 sts 6 times, 5 sts 4 times (then 4 sts 2 times, 5 sts 8 times / then 5 sts 10 times). At same time, when piece meas 4 cm from beg of shoulder shaping, shape neck as foll: Next row (RS): Bind off center 48 sts. Working each side separately, bind off 2 sts at each neck edge 1 time, 1 st 1 time. No sts rem.

**Left front:** With size 3.5 mm needles cast on 66 (70, 74) sts. Next row (RS): Selvage st (k on RS, p on WS), work main patt according to chart to last st = 16 (17, 18) patt reps, selvage st (k on RS, p on WS). Maintaining selvage sts, cont to foll chart until piece meas 40 cm from cast-on, ending with a WS row. Next RS (pocket lining) row: Place first 18 (20, 22) sts and last 18 (20, 22) sts on hold = center 30 sts rem for pocket lining. Work in St st across pocket lining sts for 36 cm, ending with a WS row. Next row (RS): Work next row of main patt chart across first 18 (20, 22) sts left on hold, across 30 pocket lining sts and last 18 (20, 22) sts left on hold = 66 (70, 74) sts. Cont in patt across all sts until piece meas 62 cm from cast-on, ending with a WS row. Shape neck: Working full-fashion dec, dec 1 st at end of next RS row, then every 6th row 17 times (then every 6th row 17 times / then every alt 4th and 6th row 19 times) and when same length as back to shoulder, shape shoulder at right edge same as for back. No sts rem.

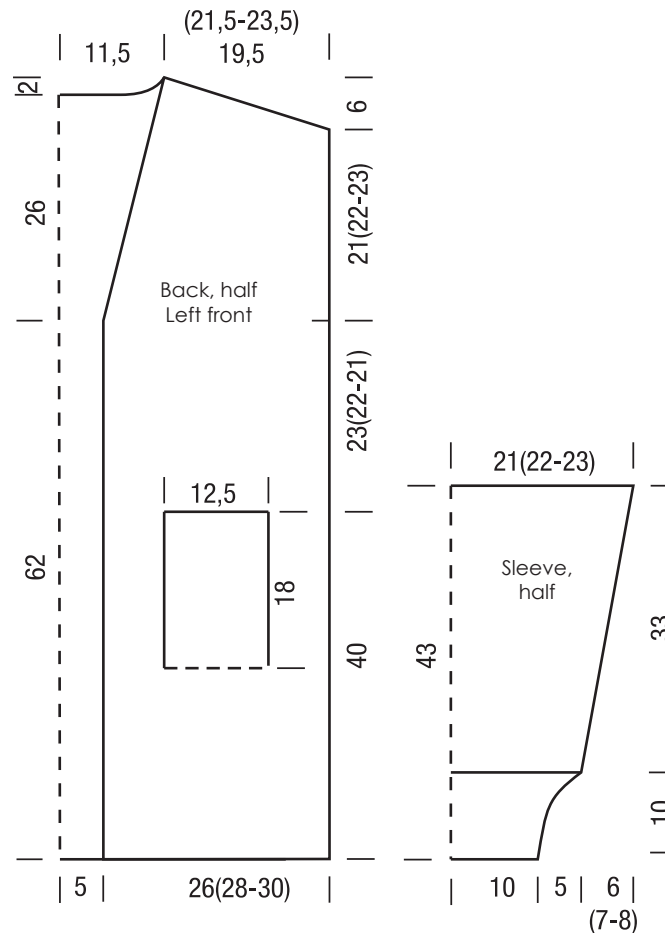
**Right front:** Work same as left front, reversing all shaping.

**Sleeves:** With size 3 mm needles cast on 50 sts. Next row (WS): Selvage st (p on WS, k on RS), p1, \* k2, p2; rep from \* to last 4 sts, k2, p1, selvage st (p on WS, k on RS). Cont in rib patt as set by last row until piece meas 10 cm from cast-on, increasing 24 sts evenly across last WS row = 74 sts. Change to size 3.5 mm needles. Next row (RS): Selvage st, work main patt according to chart to last st = 18 patt reps, selvage st. Maintaining selvage sts, cont to foll chart and shape sleeve as foll: Working full-fashion inc, inc 1 st at each end of 11 (9, 9)th row worked in main patt, then every 8th row 13 times (then every alt 6th and 8th row 15 times / then every 8th row 3 times, then every 6th row 14 times) = 102 (106, 110) sts. Work increased sts into main patt. Work even until piece meas 43 cm from cast-on. Bind off all sts.

**Finishing:** Pin pieces to measurements and block. Fold pocket linings in half, join side edges with sc. Sew shoulder seams. **Front and neckband:** With size 3 mm crochet hook, work 160 sc along straight edge and 82 sc along shaped edge of right front, 60 sc along back neck edge, 82 sc along shaped edge and 160 sc along straight edge of left front = 544 sc. Fasten off. With size 3.5 mm circular needle and RS facing, pick up and k 1 st in each sc = 544 sts. Next row (WS): Selvage st (p on WS, k on RS), \* p2, k2; rep from \* to last 3 sts, p2, selvage st (p on WS, k on RS). Cont in rib patt as set by last row until band meas 10 cm from pick-up row. Bind off all sts in rib. Place markers 21 (22, 23) cm down from shoulders on fronts and back. Sew on sleeves between markers. Sew side and sleeve seams.



### CARDIGAN



## GAUGE SWATCH

Before you begin knitting...

...make a gauge swatch. Use the recommended needles, yarns and pattern stitch for your gauge swatch. It should measure approx. 12 cm x 12 cm. Cast on and bind off rows, as well as selvage stitches should not be included in the measurement. Pin your swatch and block it as you would the finished pieces of the garment. Count stitches and rows over 10 cm. If your gauge swatch is too small, switch to larger needles. If your gauge swatch is too big, switch to smaller needles.

## ABBREVIATIONS

**beg** = begin(ning) · **ch** = chain · **cont** = continue · **dec** = decreas(e)(ing) · **inc** = increas(e)(ing) · **k** = knit · **kwise** = as if to knit  
**meas** = measures · **M1L** = lift strand between sts from front to back and knit this strand through the back loop · **M1R** = lift strand between sts from the back and knit this strand through the front loop · **patt** = pattern · **pm** = place marker · **p** = purl · **pwise** = as if to purl · **rem** = remain(ing) · **rep** = repeat(s) · **rev St st** = reverse stockinette stitch · **rnd(s)** = round(s) · **RS** = right side · **sc** = single crochet · **skp** = slip 1 stitch as if to knit, knit 1 stitch, pass slipped stitch over knitted stitch · **sk2p** = slip 1 stitch as if to knit, knit 2 together, pass slipped stitch over knitted stitch · **s2kp** = slip 2 stitches as if to knit, k 1 stitch, pass slipped stitches over knitted stitch · **sl** = slip · **st(s)** = stitch(es) · **St st** = stockinette stitch · **tbl** = through the back loop · **tog** = together · **wyib** = with yarn in back of work · **wyif** = with yarn in front of work · **WS** = wrong side · **yo(s)** = yarn over(s)