



[www.lana-grossa.com](http://www.lana-grossa.com)

# **CARDIGAN · CASHMERE 16 FINE**

Design 02 – Classici 21

# CARDIGAN · CASHMERE 16 FINE

## Design 02 – Classici 21



**Size** 36/38 (40/42, 44)

Instructions are given for first size. Figures in parenthesis refer to larger sizes. When only one figure is given, it applies to all sizes.

**Materials:** 350 (400, 450) g of Lana Grossa **Cashmere 16 Fine** (80% Merino wool, 10% cashmere, 10% polyamide; 320 m/50 g) in Grey/Green (**col 34**). Size 4.5 and 5 mm needles; size 4.5 mm circular needle, 80 cm long; five 20 mm buttons in dark green.

**Rib patt:** P2, k2.

**St st:** K on RS, p on WS.

**Garter st:** K every row.

**Selva st:** On every row: Knit first and last st.

**Gauges:** 23 sts and 40 rows = 10 x 10 cm in St st on size 4.5 mm needles; 26 sts and 35 rows = 10 x 10 cm in rib patt on size 5 mm needles, measured slightly stretched.

**Back:** Worked side to side. Arrow on schematic shows direction of work. With size 4.5 mm needles cast on 144 (146, 148) sts. Beg with a WS row, work in St st until piece meas 70 (74, 78) cm from cast-on. Bind off all sts. Bottom edging: With size 4.5 mm needles and RS facing, pick up and k 1 st in every other row along bottom edge of back. Work in garter st for 6 rows. Loosely bind off all sts. Split hem edging: With size 4.5 mm needles, RS facing and beg at bottom edge, pick up and k 34 sts over 14.5 cm along cast-on edge. Knit 1 WS row. Bind off all sts kwise. Repeat along bound-off edge.

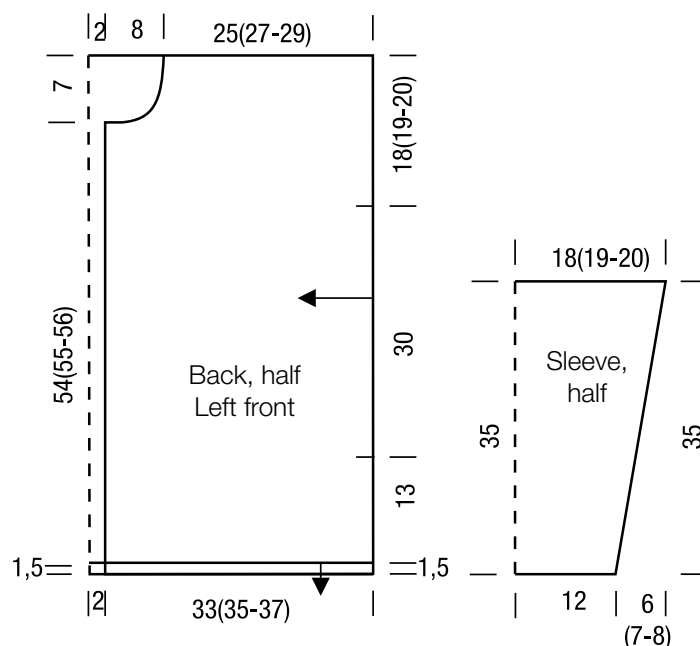
**Left front:** Work same as back until piece meas 25 (27, 29) cm from cast-on, ending with a WS row. Shape neck: At beg of RS rows, bind off 10 sts 1 time, 3 sts 1 time, 1 st 3 times and when piece meas 33 (35, 37) cm from cast-on, bind off rem 128 (130, 132) sts. Work bottom edging same as for back. Work split hem edging along cast-on edge same as for back.

**Right front:** Work same as left front, reversing all shaping.

**Sleeves:** With size 5 mm needles cast on 62 sts. Next row (WS): Selva st, p1, \* k2, p2; rep from \* to last 4 sts, k2, p1, selva st. Cont in rib patt as set by last row and shape sleeve as foll: Inc 1 st at each end of 9 (9, 7)th row from cast-on, then every alt 6th and 8th row 14 times, then every 6th row 2 times (then every 8th row 1 time, then every 6th row

17 times / then every 6th row 12 times, then every alt 4th and 6th row 8 times) = 96 (100, 104) sts. Work increased sts into rib patt. Work even until piece meas 35 cm from cast-on. Bind off all sts in rib.

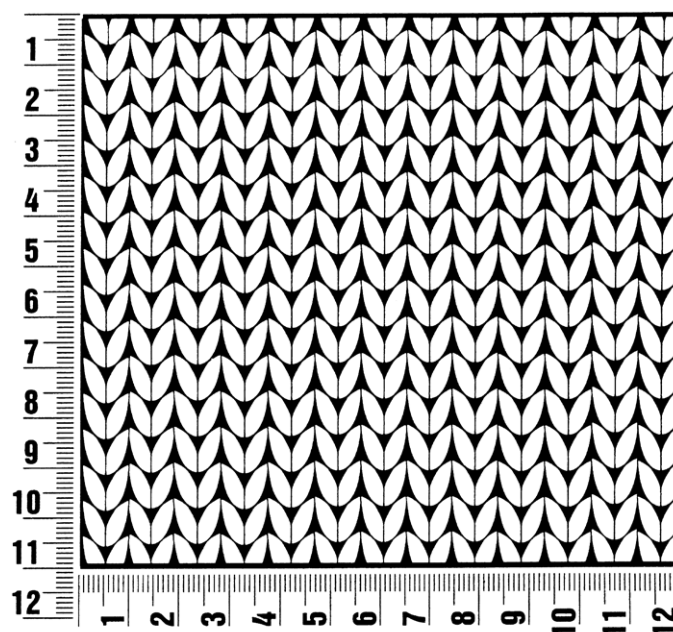
**Finishing:** Pin pieces to measurements and block. Sew shoulder seams. **Collar:** With size 4.5 mm circular needle, pick up and k 98 sts evenly along right front, back and left front neck edge. Work in St st for 18 cm. Loosely bind off all sts. Fold collar in half to WS and sew down. **Button band:** With size 4.5 mm circular needle and RS facing, pick up and k 158 (162 - 166) sts evenly along left front edge including collar edge. Next row (WS): Selva st, \* p2, k2; rep from \*, end selva st. Work in rib patt as set by last row until band meas 4 cm. Bind off all sts in rib. **Buttonhole band:** With size 4.5 mm circular needle and RS facing, pick up and k 118 (122, 126) sts evenly along right front edge including collar edge. Work same as button band and at same time, when band meas 2 cm, work buttonholes as foll: Next RS row: Work bottom buttonhole 21 (22, 23) cm up from cast-on edge, rem 4 buttonholes spaced 8 cm apart. For each buttonhole, bind off 2 sts over a p2 rib segment. On foll WS row, cast on 2 sts over each set of bound-off sts. Place markers 18 (19, 20) cm down from shoulders on fronts and back. Sew on sleeves between markers. Sew side and sleeve seams, leaving bottom 14.5 cm of side seams open for split hem. Sew on buttons.



## Gauge Swatch

### Before you begin ...

...make a gauge swatch. Use the recommended needles, yarns and pattern stitch for your gauge swatch. It should measure approx. 12 cm x 12 cm. Cast-on and bind-off rows, as well as selvage stitches should not be included in the measurement. Pin your swatch and block it as you would the finished pieces of the garment. Count stitches and rows over 10 cm. If your gauge swatch is too small, switch to larger needles. If your gauge swatch is too big, switch to smaller needles.



## Abbreviations

**beg** = begin(ning) · **ch** = chain · **cont** = continue · **dec** = decreas(e)(ing) · **inc** = increas(e)(ing) · **k** = knit · **kwise** = as if to knit  
**meas** = measures · **M1L** = lift strand between sts from front to back and knit this strand through the back loop · **M1R** = lift strand between sts from the back and knit this strand through the front loop · **patt** = pattern · **pm** = place marker · **p** = purl  
**pwise** = as if to purl · **rem** = remain(ing) · **rep** = repeat(s) · **rev St st** = reverse stockinette stitch · **rnd(s)** = round(s) · **RS** = right side · **sc** = single crochet · **skp** = slip 1 stitch as if to knit, knit 1 stitch, pass slipped stitch over knitted stitch · **sk2p** = slip 1 stitch as if to knit, knit 2 together, pass slipped stitch over knitted stitch · **s2kp** = slip 2 stitches as if to knit, k 1 stitch, pass slipped stitches over knitted stitch · **sl** = slip · **st(s)** = stitch(es) · **St st** = stockinette stitch · **tbl** = through the back loop · **tog** = together · **wyib** = with yarn in back of work · **wyif** = with yarn in front of work · **WS** = wrong side · **yo(s)** = yarn over(s)

### Publisher's Info

**Publisher:** Lana Grossa GmbH, Gaimersheim, [www.lana-grossa.com](http://www.lana-grossa.com)

**Photographer:** Wilfried Wulff, [www.wilfriedwulff.com](http://www.wilfriedwulff.com)