

FILATI NO. 62

FILATI

Design 31

PONCHO



### PONCHO

#### Size 36 to 46

Due to the casual shape, the model fits all indicated sizes.

**Material:** Lana Grossa quality "Sara" (65% cotton, 30% (Baby) alpaca, 5% virgin wool (merino), running length = approx. 125 m/50 g); **400 g** Mottled Beige/Golden Yellow (col 19); Size 4 knitting needles and 5, 1 size 4 circular needle, 50 cm long, 1 cable needle.

**Selvage sts:** On every row: Knit first and last st. Note: Work all edges with this selvage st.

**Ribs:** k p alt.

**Rib and cable-rib pattern:** Knit according to chart A/B. The numbers on the right side indicate RS. Work sts. on WS work as they appear or as explained in the chart key. All stitches are drawn in the width. The arrow denotes the middle. In height for the ribs according to chart A knit the 1st and 2nd row 1x, then repeat these 2 rows, for the cable-rib pattern according to Chart B knit rows 1 – 112 1x.

**Rib pattern:** Knit according to chart C/D. The numbers on the right side indicate RS. Work sts. on WS as they appear. Begin the row with the stitches in front of the 1st arrow in the width, knit the pattern repeat [= 8 sts] between the arrows, end with the sts after the 2nd arrow. For the waistband rib knit the 1st and 2nd row 1x according to chart C, then repeat these 2 rows. For the rib pattern according to chart D, knit the 1st - 4th rows 1x, then rep. always the 3rd and 4th rows. For the sake of clarity, 2 pattern repeat in the height are drawn.

**Gauge:** 20 sts and 24 rows rib [back] with size 5 needles = 10 x 10 cm; 21 sts and 24 rows cable rib pattern [front] with size = 10 x 10 cm.

**Front:** Cast on 139 sts with size 4 needles. For the waistband knit 5 cm = 16 rows of ribs A. Then use size 5 needle continue working the cable rib pattern B, inc 2 sts in 1st row as shown = 141 sts. From the 3rd pattern row, decr 1 st on both sides corresponding to the pattern as shown, in the center incr 1 st before and after the rib strip. That's how the cable and pattern stripes go to right and left side. The number of sts always remains the same. In the center part the piece becomes automatically shorter due to the knitting technique. After 100 rows from the beginning of the pattern for the neckline, the middle 21 sts put on hold and continue knitting each side separately. Now only do the decr at the side. In this way, the slanted neckline results automatically. After the 112th row cast off the sts. The sloping shoulders are also a result of the knitting technique automatically. There are no further decr necessary. Finish the other side in the opposite way as shown.

**Back:** Cast on 133 sts with size 4 needles. For the waistband knit 5 cm = 16 rows of rib C. Then continue working with size 5 needle in rib pattern D as described. After 27 cm = 64 rows from the end of the waistband, mark the beginning of the armholes on both sides and continue knitting. At a height of

20 cm = 48 rows cast off 4 sts on both sides for the shoulder slants. Then cast off 10x 4 sts in every 2nd row. In the following row cast off the remaining 45 sts for the straight edge of the neckline.

**Finishing:** Pin pieces to measurements and block. Sew the seams, the side seams each 5 cm from the lower edge [= end of waistband] up to the marking. Slits of 5 cm on both sides remain open at the bottom. With circular needle size 4, pick up 77 more sts from the neckline edge in addition to the 21 sts rem. = 98 sts. For the turtleneck, knit ribs in rds., making sure that k and p continue over the corresponding sts of the rib stripe. At a collar height of 12 cm cast off the sts loosely as they appear.

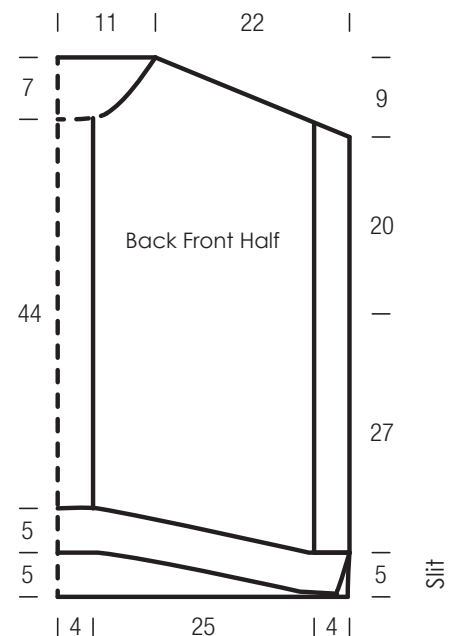
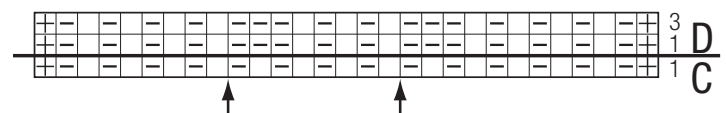
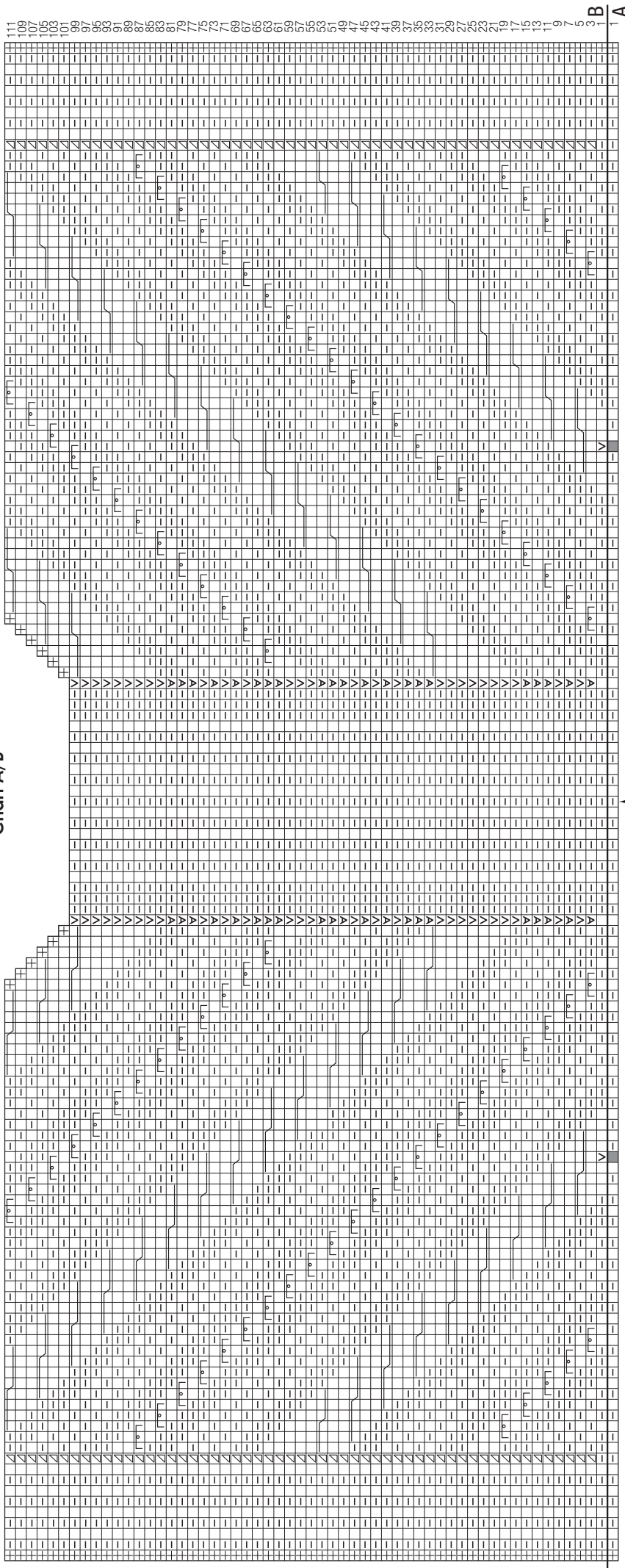









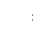




Chart C/D





**Chart key:**

-  = selvage st as described
-  = k
-  = p
-  = p2tog
-  = M1R
  
-  = M1L
  
-  = no stitch, is only used for graphic representation and is simply skipped over when knitting
-  = iSlip 1 st from RS, 2 k, then pull the slipped st over it = 2 sts, on the WS 1 y between 2 p = 3 sts
-  = sl 3 sts to cn and hold in front of work, k3, then k3 from cn
-  = sl 3 sts to cn and hold in back of work, k3, then k3 from cn
-  = sl 4 sts to cn and hold in front of work, k4, then k4 from cn
-  = sl 4 sts to cn and hold in back of work, k4, then k4 from cn



## PONCHO

## GAUGE SWATCH

Before you begin knitting...

...make a gauge swatch. Use the recommended needles, yarns and pattern stitch for your gauge swatch. It should measure approx. 12 cm x 12 cm. Cast on and bind off rows, as well as selvage stitches should not be included in the measurement. Pin your swatch and block it as you would the finished pieces of the garment. Count stitches and rows over 10 cm. If your gauge swatch is too small, switch to larger needles. If your gauge swatch is too big, switch to smaller needles.

## ABBREVIATIONS

**beg** = begin(ning) · **ch** = chain · **cont** = continue · **dec** = decreas(e)(ing) · **inc** = increas(e)(ing) · **k** = knit · **kwise** = as if to knit · **meas** = measures · **M1L** = lift strand between sts from front to back and knit this strand through the back loop · **M1R** = lift strand between sts from the back and knit this strand through the front loop · **patt** = pattern · **pm** = place marker · **p** = purl · **pwise** = as if to purl · **rem** = remain(ing) · **rep** = repeat(s) · **rev St st** = reverse stockinette stitch · **rnd(s)** = round(s) · **RS** = right side · **sc** = single crochet · **skp** = slip 1 stitch as if to knit, knit 1 stitch, pass slipped stitch over knitted stitch · **sk2p** = slip 1 stitch as if to knit, knit 2 together, pass slipped stitch over knitted stitch · **s2kp** = slip 2 stitches as if to knit, k 1 stitch, pass slipped stitches over knitted stitch · **sl** = slip · **st(s)** = stitch(es) · **St st** = stockinette stitch · **tbl** = through the back loop · **tog** = together · **wyib** = with yarn in back of work · **wyif** = with yarn in front of work · **WS** = wrong side · **yo(s)** = yarn over(s)