



© Lana Grossa GmbH

Design 12 – Lookbook 16

SHIRT RICCIO

SHIRT · RICCIO

Design 12 – Lookbook 16



Size 36/38 (40/42, 44/46, 48/50)

Instructions are given for first size. Figures in parenthesis refer to larger sizes. When only one figure is given, it applies to all sizes.

Materials: 150 (150, 200, 200) g of Lana Grossa **Riccio** (84% cotton, 16% polyamide; 110 m/50 g) in White (**col 1**), 50 (50, 50, 100) g in Pink (**col 9**), 50 (50, 100, 100) g in Yellow (**col 14**), 50 (100, 100, 100) g in Coral (**col 12**) and 50 (50, 50, 50) g in Light Grey (**col 2**). Size 4 mm needles; short size 4 mm circular needle.

Rib patt: * K1, p1; rep from *, end k1.

Garter st: K every row.

Eyelet patt: Rows 1 and 2: Work in garter st. Row 3 (RS): Sel-vage st, * k2tog, yo; rep from * to last 2 sts, k1, selvage st. Row 4 (WS): Purl all sts and yos. Row 5 (RS): Selvage st, *yo, k2tog, rep from * cont, end with k1, selvage st. Row 6 (WS): P all sts and yo. Rep rows 1 – 6 for eyelet patt.

Main patt:

4 rows eyelet patt in White,
4 rows eyelet patt in Pink,
4 rows eyelet patt in Light Grey,
4 rows eyelet patt in Pink,
4 rows garter st in White,
4 rows eyelet patt in White,
4 rows eyelet patt in Yellow,
4 rows eyelet patt in Coral,
4 rows eyelet patt in Yellow,
4 rows garter st in White,
4 rows eyelet patt in White,
8 rows eyelet patt in Pink,
8 rows eyelet patt in Coral,
8 rows eyelet patt in Yellow,
8 rows eyelet patt in Light Grey,
12 rows eyelet patt in White,
6 rows garter st in White,
[4 rows eyelet patt in Coral, 4 rows eyelet patt in White] 3 times,
4 rows garter st in White,
4 rows eyelet patt in Pink,
4 rows eyelet patt in Light Grey,
4 rows eyelet patt in Pink,
6 rows garter st in White,
4 rows eyelet patt in Yellow,
4 rows eyelet patt in Coral,
4 rows eyelet patt in Yellow,
4 rows eyelet patt in White,
4 rows eyelet patt in Coral,
remainder in eyelet patt in Yellow.

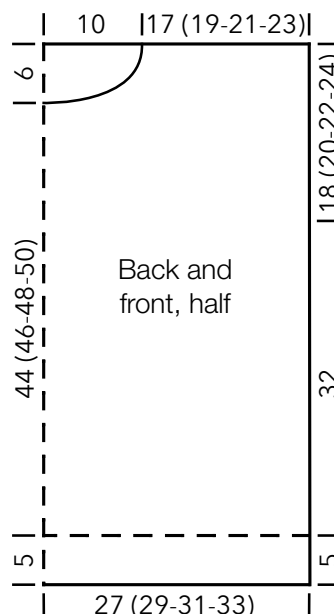
Gauge: 16 sts and 32 rows = 10 x 10 cm in eyelet patt on size 4 mm needles.

Back: With size 4 mm needles and White cast on 87 (93, 99, 105) sts. Work in rib patt for 5 cm, ending with a WS row. Work in main patt for 32 cm. Place marker in first and last st on last WS row to indicate beg of armholes. Cont in main patt until piece meas 18 (20, 22, 24) cm from armhole markers. Bind off all sts.

Front: Work same as back until piece meas 12 (14, 16, 18) cm from armhole markers, ending with a WS row. Shape neck: Next row (RS): Bind off center 13 sts. Working each side separately, bind off 4 sts at each neck edge 1 time, 2 sts 2 times, 1 st 1 time and when same length as back to shoulders, bind off rem 28 (31, 34, 37) sts for each shoulder.

Finishing: Sew shoulder and side seams. **Neck edging:** With size 4 mm circular needle and White, pick up and k 86 sts evenly around neck edge. Place beg of rnd marker and join for working in rnds. Knit 2 rnds. Loosely bind off all sts.

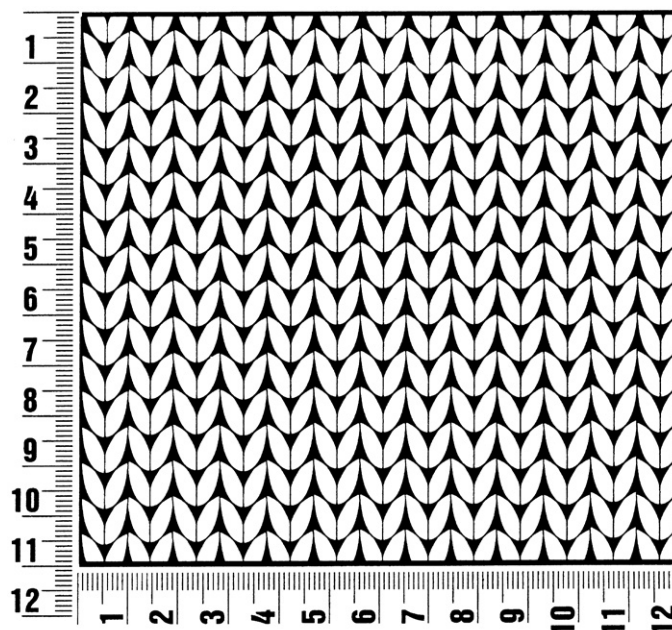
Armhole bands: With size 4 mm circular needle and White, pick up and k 78 (84, 90, 96) sts evenly around armhole edge. Place beg of rnd marker and join for working in rnds. Work in rib patt (k1, p1 around) for 2 cm. Bind off all sts.



Gauge Swatch

Before you begin ...

...make a gauge swatch. Use the recommended needles, yarns and pattern stitch for your gauge swatch. It should measure approx. 12 cm x 12 cm. Cast-on and bind-off rows, as well as selvedge stitches should not be included in the measurement. Pin your swatch and block it as you would the finished pieces of the garment. Count stitches and rows over 10 cm. If your gauge swatch is too small, switch to larger needles. If your gauge swatch is too big, switch to smaller needles.



Abbreviations

beg = begin(ning) · **ch** = chain · **cont** = continue · **dec** = decreas(e)(ing) · **inc** = increas(e)(ing) · **k** = knit · **kwise** = as if to knit
meas = measures · **M1L** = lift strand between sts from front to back and knit this strand through the back loop · **M1R** = lift strand between sts from the back and knit this strand through the front loop · **patt** = pattern · **pm** = place marker · **p** = purl
pwise = as if to purl · **rem** = remain(ing) · **rep** = repeat(s) · **rev St st** = reverse stockinette stitch · **rnd(s)** = round(s) · **RS** = right side · **sc** = single crochet · **skp** = slip 1 stitch as if to knit, knit 1 stitch, pass slipped stitch over knitted stitch · **sk2p** = slip 1 stitch as if to knit, knit 2 together, pass slipped stitch over knitted stitch · **s2kp** = slip 2 stitches as if to knit, k 1 stitch, pass slipped stitches over knitted stitch · **sl** = slip · **st(s)** = stitch(es) · **St st** = stockinette stitch · **tbl** = through the back loop · **tog** = together · **wyib** = with yarn in back of work · **wyif** = with yarn in front of work · **WS** = wrong side · **yo(s)** = yarn over(s)

Publisher's Info

Publisher: Lana Grossa GmbH, Gaimersheim, www.lana-grossa.com

Photographer: Wilfried Wulff, www.wilfriedwulff.com