

LINEA PURA NO. 17

FILATI

Design 2

PULLOVER



### PULLOVER

#### Size 36/38 (40/42 – 44/46)

The information for size 40/42 is in brackets before, and for size 44/46 after the dash. If there is only one information, it applies to all three sizes.

**Material:** Lana Grossa quality "Linissimo" (50% linen, 50% cotton, RL = approx. 187 m/50 g): approx. **250 (300 – 350) g** white (col. 1); size 3.5 knitting needles, 1 size 3 crochet hook

**Selvage stitch:** Slip off the first st of each row k. K last stitch of each row. Note: Work all edges with this selvage st!

**Garter stitch:** RS WS k

**Drop stitch pattern:** Knit according to the chart. The numbers on the right outside indicate the RS row, on the left outside the WS row. In width, start the row with the sts before the 1st arrow, continue knitting the s [= 1 stitch] between the arrows, and end with the sts after the 2nd arrow. For clarity, 3 repeats are shown. In height, knit the 1st - 6th rows 1x, then repeat these 6 rows over and over. Note for counting the rows: There are 2 rows of drop stitches in 1 repeat in height.

**Accentuated increases:** At the beginning of the row after the selv st and at the end of the row before the selv st, k 1 twisted out of the cross thread.

**Gauge:** 19 sts and 25 rows drop stitch pattern with size 3.5 needles [measured hanging] = 10 x 10 cm.

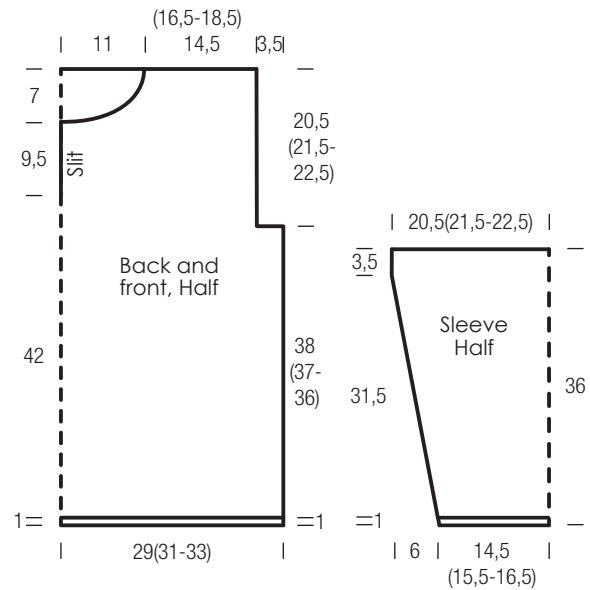
**Back:** cast on 112 (120 – 128) sts with size 3.5 needles. For the band, knit 1 cm = 5 rows in garter st. Then continue in the drop stitch pattern. After 38 (37 – 36) cm = 96 (94 – 92) rows from the band end, cast off 7 sts on each side for the armholes = 98 (106 – 114) sts.

Now continue knitting straight. When the armhole measures 20.5 (21.5 – 22.5) cm = 52 (54 – 56) rows, cast off all sts, marking the middle 42 sts for the straight neckline and 28 (32 – 36) stitches on each side of this for the shoulders.

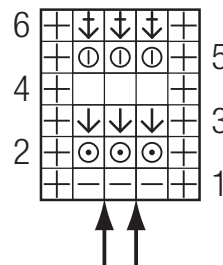
**Front:** Knit like back, but with a slit and a round neckline. For the slit, divide the work in the middle at 4 (5 - 6) cm = 10 (12 - 14) rows of armhole height and continue knitting both sides separately. At 9.5 cm = 24 rows of slit height, cast off 6 sts on the inner edge for the neckline curve, then in every 2nd row cast off 1x 5 sts, 1x 4 sts, 1x 3 sts, 1x 2 sts and 1x 1 st. At 7 cm = 18 rows of neckline height, cast off the remaining 28 (32 - 36) shoulder sts. Finish the other side in the opposite way.

**Sleeves:** Cast on 58 (62 - 66) sts with size 3.5 needles. For the band, knit 5 rows = 1 cm in garter st. Then continue working in the drop st pattern. For the shape, inc 1 st on both sides in the 7th row from the end of the band, then inc 1 st on each side 11 times in every 6th row = 82 (86 - 90) sts. Insert the increased sts in the drop st pattern in the correct order. After 31.5 cm = 80 rows from the end of the band, insert 1 marker on both sides and continue working straight. After 3.5 cm = 8 rows from the marker, cast off the sts loosely.

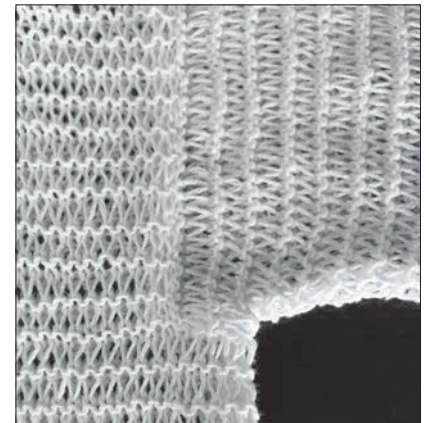
**Finishing:** Stretch the pieces, moisten them and let them dry. Close the seams, the sleeve seams up to the marking. Using size 3 crochet hook, crochet around the entire neckline edge [without the slit] with 1 row of slip stitch. Insert the sleeves, see illustration



Chart



Sleeve insert



**Chart key:**

- ⊕ = selv st
- = k1
- ◻ = p1
- ⊙ = p1, yo
- ⊗ = k1, yo
- ⬇ = k1, drop the yarn over and pull the stitches long
- ⬇ = p1, drop the yarn over and pull the stitches long

## PULLOVER

## GAUGE SWATCH

Before you begin knitting...

...make a gauge swatch. Use the recommended needles, yarns and pattern stitch for your gauge swatch. It should measure approx. 12 cm x 12 cm. Cast on and bind off rows, as well as selvage stitches should not be included in the measurement. Pin your swatch and block it as you would the finished pieces of the garment. Count stitches and rows over 10 cm. If your gauge swatch is too small, switch to larger needles. If your gauge swatch is too big, switch to smaller needles.

## ABBREVIATIONS

st = stitch

Rr= row

rd = round

yo = yarn over

RL = running length

continued = continuous

col. = color

acc. = according

k = knit

tog = together

p = purl

dec. = decrease

inc. = increase

rem. = remaining(s)

ch = chain stitch(s)

sl st = slip stitch(s)

dc = single stitch(s)

dc = double crochet

dc = double treble crochet

nd. = needle

rep = repeat

no. = number

image = illustration