

LINEA PURA NO. 17

FILATI

Design 7

PULLOVER



### PULLOVER

#### Size 36/38 (40/42 – 44/46)

The information for size 40/42 is in brackets before, and for size 44/46 after the dash. If there is only one information, it applies to all three sizes.

**Material:** Lana Grossa quality "Linissimo" (50% linen, 50% cotton, RL = approx. 187 m/50 g): approx. **300 (350 – 400) g** stone grey (col. 3); size 2.5 and 3.5 knitting needles, 1 size 2.5 circular knitting needle, 50 cm long

**Selvage stitch:** Slip off the first st of each row k. K last stitch of each row. Note: Work all edges with this selvage st!

**Rib pattern:** k1, p1, alt.

**Grid pattern:** Knit according to knitting chart. The numbers on the right outside indicate the RS row, on the left outside the WS row. In width, start the row with the stitches before the 1st arrow, continue knitting the Rep [= 4 sts] between the arrows, and end with the stitches after the 2nd arrow. In height, knit the 1st - 4th rows once, then repeat these 4 rows over and over.

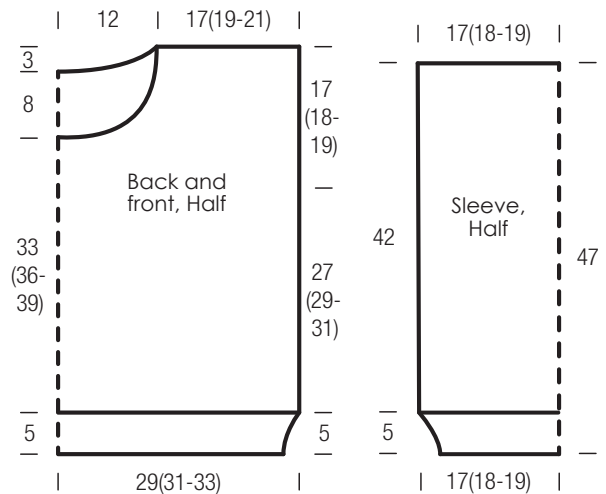
**Gauge:** 24 sts and 25 rows grid pattern with size 3.5 needles = 10 x 10 cm.

**Back:** Cast on 142 (150 - 158) sts with size 2.5 needles. For the band, work 5 cm = 18 rows of ribbing. Then continue in grid pattern with size 3.5 needles. After 27 (29 - 31) cm = 68 (72 - 78) rows from the end of the waistband, mark the beginning of the armholes on both sides and continue knitting straight. When the armhole measures 14 (15 - 16) cm = 34 (38 - 40) rows, cast off the middle 48 sts for the round neckline and continue knitting both sides separately. On the inner edge, cast off 1x 3 sts and 1x 2 sts on every 2nd row for further curving. When the neckline measures 3 cm = 8 rows, cast off the remaining 42 (46 - 50) shoulder sts. Finish the other side in the opposite way.

**Front:** Knit like the back, but with a deeper neckline. To do this, cast off the middle 36 sts when the armhole is 6 (7 - 8) cm = 14 (18 - 20) rows and continue knitting both sides separately. On the inner edge, cast off 1x 3 sts, 1x 2 sts and 1 st 6 times on every 2nd row for the further curve. Cast off the shoulder sts on the outer edge at the same height as on the back. Finish the other side in the opposite direction

**Sleeves:** Cast on 82 (86 - 94) sts with size 2.5 needles. For the waistband, work 5 cm = 18 rows of ribbing. Then continue in grid pattern with size 3.5 needles. After 42 cm = 106 rows from the end of the waistband, loosely cast off the sts.

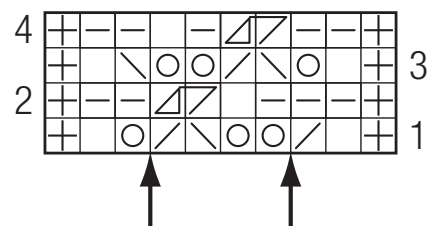
**Finishing:** Stretch the pieces, moisten and allow to dry. Close the seams. Using size 2.5 circular needle, pick up 128 sts from the neckline. For the band, work ribbing in rounds. When the band is 2.5 cm high, cast off the sts as they appear. Insert the sleeves.



#### Chart key:

- = selv st
- = k1
- = p1
- = 1 yo
- = k2tog
- = skp = slip 1 st as if to knit, knit 1 st, pass slipped st over knitted st
- = 2 yo, next WS row k 1st yo, p 2nd yo.
- = p2tog, but do not let them slip from the left needle, k2tog again = 2 sts

#### Chart:



## PULLOVER

## GAUGE SWATCH

Before you begin knitting...

...make a gauge swatch. Use the recommended needles, yarns and pattern stitch for your gauge swatch. It should measure approx. 12 cm x 12 cm. Cast on and bind off rows, as well as selvage stitches should not be included in the measurement. Pin your swatch and block it as you would the finished pieces of the garment. Count stitches and rows over 10 cm. If your gauge swatch is too small, switch to larger needles. If your gauge swatch is too big, switch to smaller needles.

## ABBREVIATIONS

st = stitch

Rr= row

rd = round

yo = yarn over

RL = running length

continued = continuous

col. = color

acc. = according

k = knit

tog = together

p = purl

dec. = decrease

inc. = increase

rem. = remaining(s)

ch = chain stitch(s)

sl st = slip stitch(s)

dc = single stitch(s)

dc = double crochet

dc = double treble crochet

nd. = needle

rep = repeat

no. = number

image = illustration