



© Lana Grossa GmbH

Design 53 – Filati Journal 67

CARDIGAN SOTTILE

CARDIGAN · SOTTILE

Design 53 – Filati Journal 67



Size One size

Materials: 500 g of Lana Grossa **Sottile** (85% cotton, 15% Merino wool; 250 m/50 g) in Coral (**col 3**). Size 3 and 5 mm needles; cable needle [cn].

Selvage stitches: On every row: Sl first st kwise, k last st.

Rib patt: K1, p1.

St st: K on RS, p on WS.

Rev St st: P on RS, k on WS.

Chart patt: Numbers at right edge of chart indicate RS rows; on WS rows, work sts as they appear, knit into row 1 yos. Position sts as given in instructions. Work rows 1 – 62 once, then rep rows 3 – 62.

Gauges: 22 sts and 32 rows = 10 x 10 cm in rib patt on size 3 mm needles; 21 sts and 25 rows = 10 x 10 cm in chart patt on size 5 mm needles.

Back: With size 3 mm needles cast on 125 sts. Next row (WS): Selvage st, * p1, k1; rep from * to last 2 sts, p1, selvage st. Work in rib patt as set by last row until piece meas 7 cm from cast-on, ending with a RS row. Change to size 5 mm needles. Next row (WS): Selvage st, purl to last st, selvage st and at same time, decrease 23 sts evenly across row = 102 sts. Next row (RS): Selvage st, 2 sts in St st; work row 1 of chart = work 1 st before patt rep, work patt rep 7 times, work 4 sts after patt rep; 2 sts in St st, selvage st = 116 sts. Work in patt as set by last row and foll chart for a total of 68 rows = 27 cm. Shape armholes: Bind off 4 sts at beg of next 2 rows, 3 sts at beg of next 2 rows, 1 st at beg of next 4 rows = 98 sts. At same time, while binding off, drop sts indicated by dbl arrows at top of chart and unravel down to yos made on chart row 1. Cont in patt until a total of 46 rows has been worked from beg of armhole shaping and armhole meas 18 cm. Shape shoulders: At each shoulder edge bind off 6 sts 3 times, 7 sts 2 times and at same time, again drop and unravel sts indicated by dbl arrows while binding off = 34 sts. At same time, when working 3rd RS shoulder bind-off row, work neck as foll: Bind off center 28 sts. Working each side separately, bind off 3 sts 1 time, again dropping and unraveling sts indicated by dbl arrows while binding off.

Left front: With size 3 mm needles cast on 62 sts. Next row (WS): Selvage st, * p1, k1; rep from *, end selvage st. Work in rib patt as set by last row until piece meas 7 cm from cast-on, ending with a RS row. Change to size 5 mm needles. Next

row (WS): Selvage st, purl to last st, selvage st and at same time, decrease 12 sts evenly across row = 50 sts. Next row (RS): Selvage st; work row 1 of chart = work last 6 sts of patt rep, then work patt rep 3 times, work 4 sts after patt rep; selvage st = 57 sts. Work in patt as set by last row and foll chart until same length as back to armhole. Shape armhole: At beg of RS rows bind off 4 sts 1 time, 3 sts 1 time, 2 sts 1 time, 1 st 1 time = 47 sts. At same time, while binding off, drop sts indicated by dbl arrows at top of chart and unravel down to yos made on chart row 1. Cont in patt until same length as back to shoulder. Shape shoulder at right edge same as for back and at same time, again drop and unravel sts indicated by dbl arrows while binding off = 15 sts rem for neckband. Cast on 1 st at right edge of neckband (work as selvage st throughout) = 16 sts for neckband and cont in patt for 8 cm. Bind off all sts and at same time, again drop and unravel sts indicated by dbl arrows while binding off.

Right front: Work same as left front, reversing all shaping and positioning sts for chart patt on first RS row as foll: Selvage st; work row 1 of chart = work 1 st before patt rep, work patt rep 3 times, then work first 9 sts of patt rep once more; selvage st = 57 sts.

Sleeves: With size 3 mm needles cast on 54 sts. Next row (WS): Selvage st, * p1, k1; rep from *, end selvage st. Work in rib patt as set by last row until piece meas 7 cm from cast-on, ending with a RS row. Change to size 5 mm needles. Next row (WS): Selvage st, purl to last st, selvage st and at same time, decrease 10 sts evenly across row = 44 sts. Next row (RS): Selvage st; work row 1 of chart = work patt rep 13 times, then work 3 sts after patt rep; selvage st = 50 sts. Work in patt as set by last row and foll chart for a total of 56 rows = 22 cm. Shape sleeve: Next RS (inc) row: Selvage st, yo, patt to last st, yo, selvage st. On foll WS row knit into the yo, then cont to work this st in rev St st. Rep RS inc row every 6th row 4 times, then every 4th row 5 times = 70 sts. For these incs, on foll WS row, purl into the yo, then cont to work these sts in St st. Work even for 5 rows, ending with a WS row. Shape sleeve cap: Bind off 4 sts at beg of next 2 rows, 3 sts at beg of next 2 rows, 2 sts at beg of next 4 rows, 1 st at beg of next 14 rows, 4 sts at beg of next 4 rows. Bind off rem 18 sts. At same time, while binding off, drop sts indicated by dbl arrows at top of chart and unravel down to yos made on chart row 1. Additionally, drop sts worked on first inc row of sleeve shaping and unravel down to yos.

Finishing: Pin pieces to measurements and block. Sew shoulder seams. Sew bound-off edges of neckbands tog, then sew neckband to back neck. Sew in sleeves. Sew side and sleeve seams. Carefully weave in all ends.

CARDIGAN · SOTTILE

Design 53 – Filati Journal 67

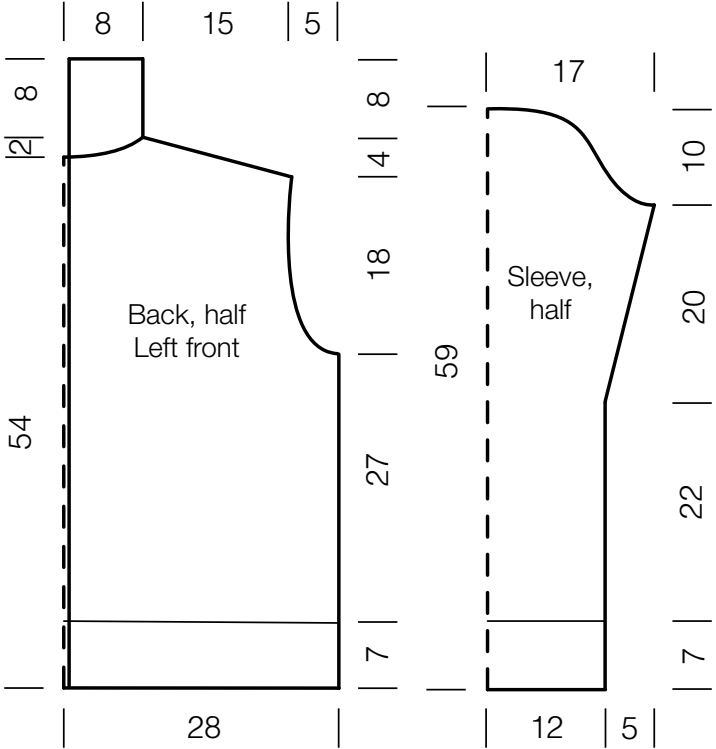
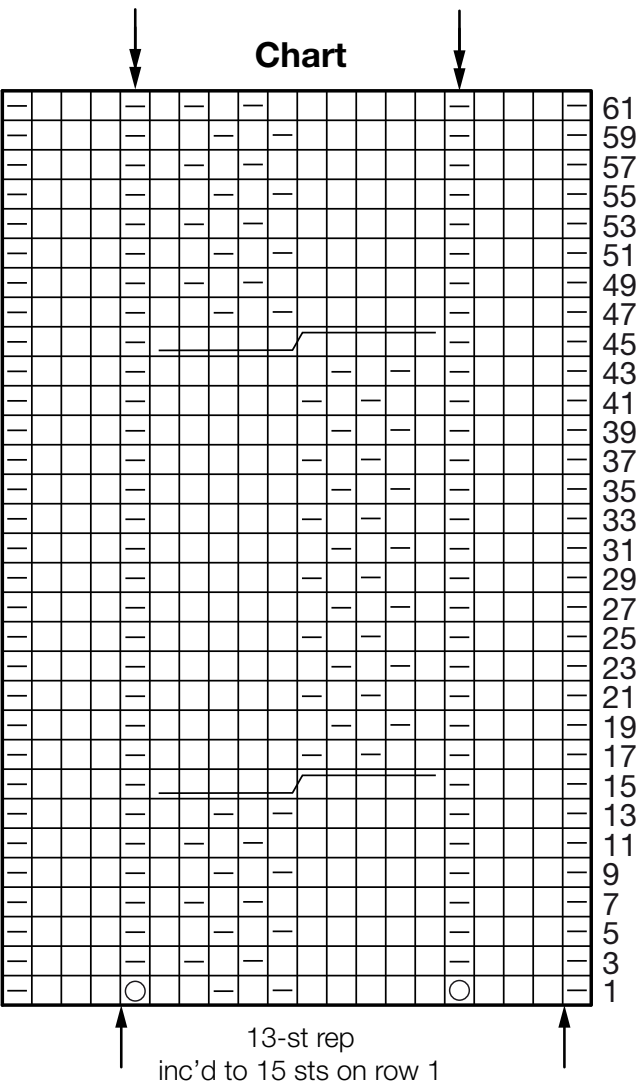


Chart key:

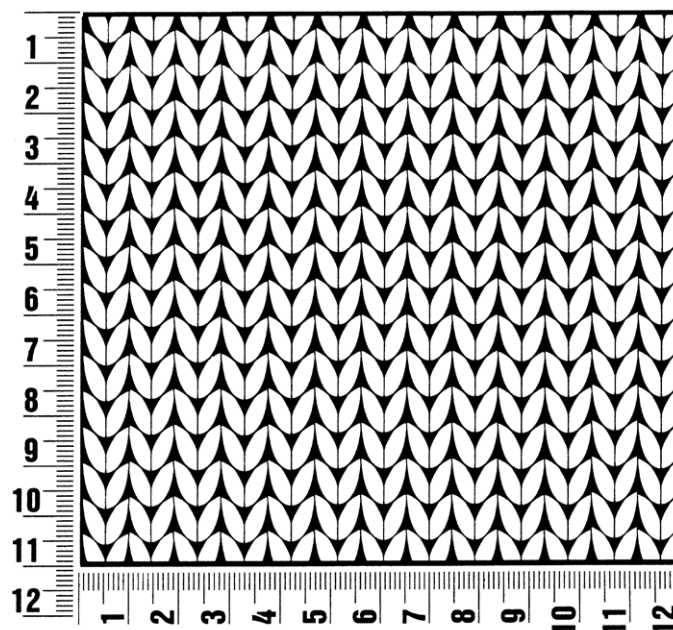
- = k1
- = p1
- = yo

= sl 5 sts to cn and hold in back of work, k5, then k5 from cn

Gauge Swatch

Before you begin ...

...make a gauge swatch. Use the recommended needles, yarns and pattern stitch for your gauge swatch. It should measure approx. 12 cm x 12 cm. Cast-on and bind-off rows, as well as selvedge stitches should not be included in the measurement. Pin your swatch and block it as you would the finished pieces of the garment. Count stitches and rows over 10 cm. If your gauge swatch is too small, switch to larger needles. If your gauge swatch is too big, switch to smaller needles.



Abbreviations

beg = begin(ning) · **ch** = chain · **cont** = continue · **dec** = decreas(e)(ing) · **inc** = increas(e)(ing) · **k** = knit · **kwise** = as if to knit
meas = measures · **M1L** = lift strand between sts from front to back and knit this strand through the back loop · **M1R** = lift strand between sts from the back and knit this strand through the front loop · **patt** = pattern · **pm** = place marker · **p** = purl
pwise = as if to purl · **rem** = remain(ing) · **rep** = repeat(s) · **rev St st** = reverse stockinette stitch · **rnd(s)** = round(s) · **RS** = right side · **sc** = single crochet · **skp** = slip 1 stitch as if to knit, knit 1 stitch, pass slipped stitch over knitted stitch · **sk2p** = slip 1 stitch as if to knit, knit 2 together, pass slipped stitch over knitted stitch · **s2kp** = slip 2 stitches as if to knit, k 1 stitch, pass slipped stitches over knitted stitch · **sl** = slip · **st(s)** = stitch(es) · **St st** = stockinette stitch · **tbl** = through the back loop · **tog** = together · **wyib** = with yarn in back of work · **wyif** = with yarn in front of work · **WS** = wrong side · **yo(s)** = yarn over(s)

Publisher's Info

Publisher: Lana Grossa GmbH, Gaimersheim, www.lana-grossa.com
Photographer: Nicolas Olonetzky, www.nicolasolonetzky.com