



© Lana Grossa GmbH

Design 02 – Classici 26

PULLOVER SETASURI

PULLOVER · SETASURI

Design 02 – Classici 26



Size 36/38 (40/42, 44)

Instructions are given for first size. Figures in parenthesis refer to larger sizes. When only one figure is given, it applies to all sizes.

Materials: 250 (275, 300) g of Lana Grossa **Setasuri** (69% Suri alpaca, 31% silk; 212 m/25 g) in Light Beige (**col 58**). Size 4 and 5 mm needles; size 4 and 4.5 mm circular needles, each 40 cm long; cable needle [cn]; two 20 mm mother-of-pearl buttons [by Union Knopf, item 46286, col 14].

Note: Work with 2 strands held tog throughout.

Rib patt: K1, p1.

Slip st rib: Multiple of 2 + 1 + 2 selvage sts. **Row 1 (RS):** Slip st selvage, sl 1 pwise wyib, * p1, sl 1 pwise wyib; rep from *, end slip st selvage. **Row 2 (WS):** Slip st selvage, p1, * k1, p1; rep from *, end slip st selvage. Rep rows 1 and 2.

Rev St st: P on RS, k on WS.

Chart patt: Numbers at right edge of chart indicate RS rows; on WS rows, work sts as they appear, purl all yos. **Back and front:** Work rows 1 – 120 once. **Sleeves:** Work rows 1 – 98 once.

Selvage sts: On every row: Knit first and last st.

Slip stitch selvage: On RS row, ktbl first st, sl last st pwise wyib; on WS row, ptbl first st, sl last st pwise wyif.

Gauges: With size 5 mm needles and 2 strands held tog: 18.5 sts and 22.5 rows = 10 x 10 cm in chart patt; 14.5 sts and 22.5 rows = 10 x 10 cm in rev St st.

Back: With size 4 mm needles and 2 strands held tog cast on 93 (99, 105) sts. Next row (WS): Selvage st, * p1, k1; rep from * to last 2 sts, p1, selvage st. Work in rib patt as set by last row until piece meas 5 (6, 7) cm from cast-on, increasing 8 sts evenly across last WS row = 101 (107, 113) sts. Change to size 5 mm needles. Next row (RS): Selvage st, 0 (3, 6) sts in rev St st; work row 1 of chart = 99 sts; 0 (3, 6) sts in rev St st, selvage st. Cont in patt as set by last row, work chart rows 1 – 120 once. **At same time,** when piece meas 38 (39, 40) cm from cast-on, place marker in first and last st on last WS row to indicate beg of armholes. Cont in patt until piece meas 57 (58, 59) cm from cast-on, ending with chart row 120. Bind off all sts.

Front: With size 4 mm needles and 2 strands held tog cast on 93 (99, 105) sts. Next row (WS): Selvage st, * k1, p1; rep from * to last 2 sts, k1, selvage st. Work in rib patt as set by last row until piece meas 5 (6, 7) cm from cast-on, increasing 8 sts evenly across last WS row = 101 (107, 113) sts. Change to size 5 mm needles. Work same as back until chart has been worked for a total of 72 rows and piece meas 37.5 (38.5, 39.5) cm from cast-on. Divide for placket: Next row (RS): Bind off center 9 sts. Working each side separately, work even for 14 cm. Shape neck: Bind off 4 sts at each neck edge 1 time, 2 sts 1 time, 1 st 5 times and when piece meas 57 (58, 59) cm from cast-on and last row worked is chart row 120, bind off all sts.

Sleeves: With size 4 mm needles and 2 strands held tog cast on 45 sts. Next row (WS): Selvage st, * p1, k1; rep from * to last 2 sts, p1, selvage st. Work in rib patt as set by last row until piece meas 5 (6, 7) cm from cast-on, increasing 6 sts evenly across last WS row = 51 sts. Change to size 5 mm needles. Next row (RS): Selvage st, 10 sts in rev St st; work row 1 of chart = 29 sts; 10 sts in rev St st, selvage st. Cont in patt as set by last row, work chart rows 1 – 98 once. **At same time,** shape sleeve as foll: Inc 1 st at each end of 13th row, then every alt 10th and 12th row 7 times = 67 sts. Work increased sts in rev St st. When piece meas 48 (49, 50) cm from cast-on, bind off all sts.

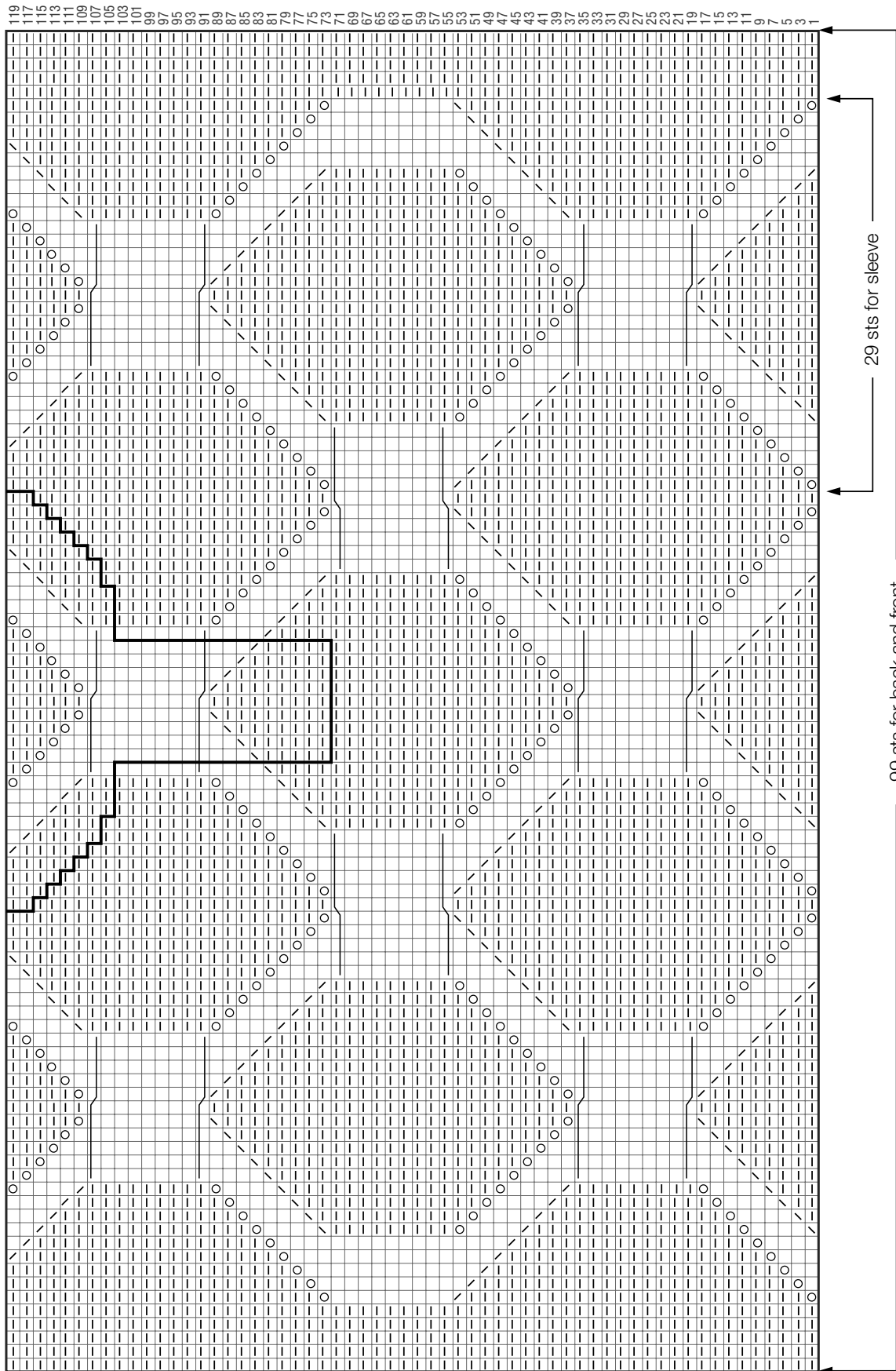
Finishing: Pin pieces to measurements and block. Sew shoulder seams. **Button band:** With size 4 mm needles and 2 strands held tog cast on 11 sts. Work slip st rib for 14 cm. Bind off all sts as they appear. **Buttonhole band:** Work same as button band until piece meas 2.5 cm, ending with a WS row. Next RS (buttonhole) row: Patt over first 4 sts, [k2tog, yo] for buttonhole, patt to end. Cont in patt for 10 cm, work 2nd buttonhole same as first buttonhole. Sew buttonhole band to right edge of placket, sew button band to left edge of placket. Overlap right band over left band and sew through both thicknesses at bind off. **Collar:** With size 4 mm circular needle and 2 strands held tog, pick up and k 93 sts evenly along neck edge: 5 sts in top edge of buttonhole band, 28 sts along right front neck edge, 37 sts along back neck edge, 28 sts along left front neck edge and 5 sts in top edge of button band. Work slip st rib for 4 cm, ending with a WS row. Change to size 4.5 mm circular needle. Cont in slip st rib for 8 cm. Loosely bind off all sts in rib. Sew on sleeves between markers. Sew side and sleeve seams. Sew on buttons.

PULLOVER · SETASURI

Design 02 – Classici 26



Chart



PULLOVER · SETASURI

Design 02 – Classici 26



Chart key:

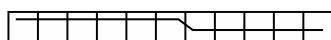
□ = k1

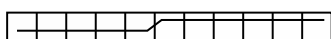
▢ = p1

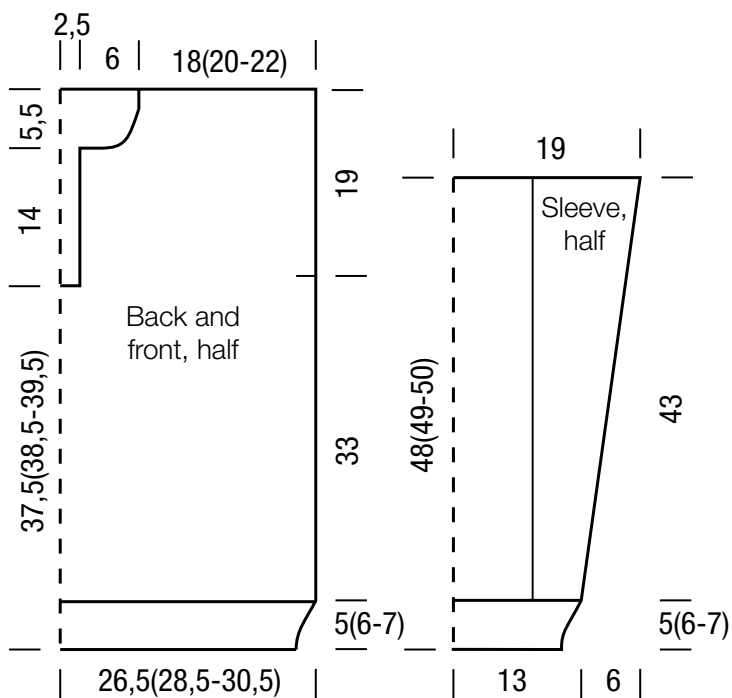
⊙ = yo

▧ = k2tog

⊞ = skp: sl 1 kwise, k1, pass slipped st over knitted st

 = sl 5 sts to cn and hold in front of work, k6, then k5 from cn

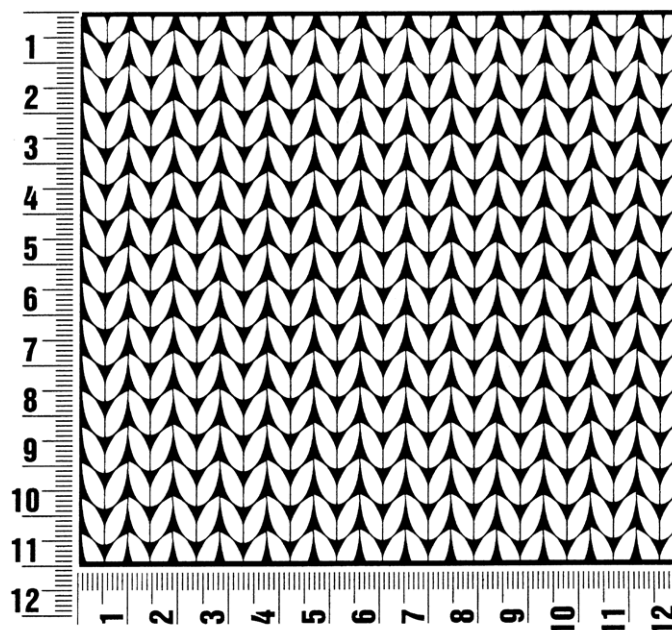
 = sl 6 sts to cn and hold in back of work, k5, then k6 from cn



Gauge Swatch

Before you begin ...

...make a gauge swatch. Use the recommended needles, yarns and pattern stitch for your gauge swatch. It should measure approx. 12 cm x 12 cm. Cast-on and bind-off rows, as well as selvage stitches should not be included in the measurement. Pin your swatch and block it as you would the finished pieces of the garment. Count stitches and rows over 10 cm. If your gauge swatch is too small, switch to larger needles. If your gauge swatch is too big, switch to smaller needles.



Abbreviations

beg = begin(ning) · **ch** = chain · **cont** = continue · **dec** = decreas(e)(ing) · **inc** = increas(e)(ing) · **k** = knit · **kwise** = as if to knit
meas = measures · **M1L** = lift strand between sts from front to back and knit this strand through the back loop · **M1R** = lift strand between sts from the back and knit this strand through the front loop · **patt** = pattern · **pm** = place marker · **p** = purl
pwise = as if to purl · **rem** = remain(ing) · **rep** = repeat(s) · **rev St st** = reverse stockinette stitch · **rnd(s)** = round(s) · **RS** = right side · **sc** = single crochet · **skp** = slip 1 stitch as if to knit, knit 1 stitch, pass slipped stitch over knitted stitch · **sk2p** = slip 1 stitch as if to knit, knit 2 together, pass slipped stitch over knitted stitch · **s2kp** = slip 2 stitches as if to knit, k 1 stitch, pass slipped stitches over knitted stitch · **sl** = slip · **st(s)** = stitch(es) · **St st** = stockinette stitch · **tbl** = through the back loop · **tog** = together · **wyib** = with yarn in back of work · **wyif** = with yarn in front of work · **WS** = wrong side · **yo(s)** = yarn over(s)

Publisher's Info

Publisher: Lana Grossa GmbH, Gaimersheim, www.lana-grossa.com

Photographer: Susan Buth, www.susanbuth.com