



© Lana Grossa GmbH

Design 34 – Classici 26

CROCHET CARDIGAN SOTTILE

CROCHET CARDIGAN · SOTTILE

Design 34 – Classici 26



Size 36/38 (40/42, 44/46, 48/50)

Instructions are given for first size. Figures in parenthesis refer to larger sizes. When only one figure is given, it applies to all sizes.

Materials: 450 (500, 550, 600) g of Lana Grossa **Sottile** (85% cotton, 15% Merino wool; 250 m/50 g) in Sage Green (**col 14**). Size 4 mm crochet hook; size 3.5 mm circular needle, 120 cm long; one set size 3.5 mm double-pointed needles [dpns].

Rib patt: K1, p1.

Crochet patt: Multiple of 6 + 1 + 3. Work according to chart. Numbers at right and left edge of chart indicate rows. Work rows 1 – 3 once, then rep rows 2 and 3.

Selvage sts: On RS row, ktbl first st, sl last st pwise wyib; on WS row, ptbl first st, sl last st pwise wyif.

Gauge: 24 sts and 9 rows = 10 x 10 cm in crochet patt with size 4 mm hook.

Note: Body and sleeves are crocheted. Front and neckband, bottom band and sleeve cuffs are knitted during finishing.

Back: With size 4 mm hook ch 121 (133, 139, 151) + ch 3. Work chart for 62 (61, 60, 59) cm, working 6-st patt rep between arrows 18 (20, 21, 23) times across row. Place marker at each edge to indicate beg of armholes. Cont in patt until piece meas 85 cm from beg. Fasten off.

Left front: With size 4 mm hook ch 55 (61, 67, 73) + ch 3. Work chart for 60 cm, working 6-st patt rep between arrows 7 (8, 9, 10) times across row. Shape neck: Dec 1 st at neck edge on next row, then every alt row 11 times = 43 (49, 55, 61) sts. Cont in patt until piece meas 85 cm from beg. Fasten off.

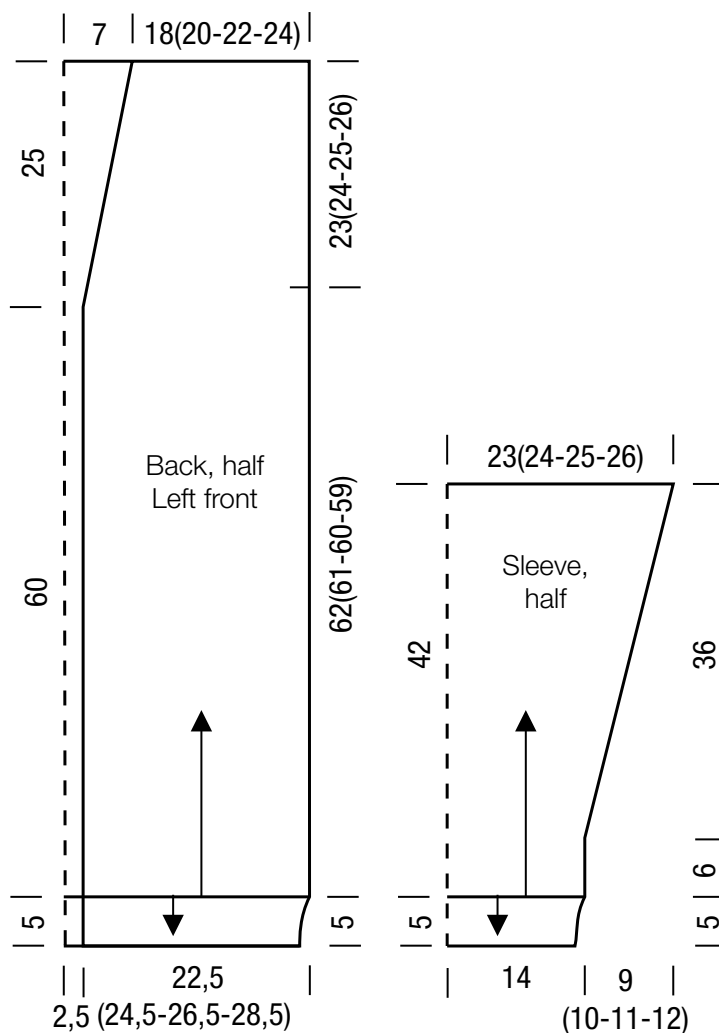
Right front: Work same as left front, reversing all shaping.

Sleeves: With size 4 mm hook ch 67 + ch 3. Work chart, working 6-st patt rep between arrows 9 times across row, and shape sleeve as foll: Inc 1 st at each end of 6th row, then every alt row 11 (9, 6, 4) times, then every foll row 10 (14, 19, 23) times. To increase, work 2 dc in 2nd dc at beg of row and in 2nd to last dc at end of row. After having increased a total of 6 dc, work increased sts into patt.

Finishing: Pin pieces to measurements and block. Join shoulders with sl st. **Bottom band:** With size 3.5 mm circular needle and RS facing, pick up and k 229 (245, 267, 287) sts along bottom edge of body: 54 (58, 64, 68) sts along left front, 121 (129, 139, 151) sts along back and 54 (58, 64, 68) sts along right front. Next row (WS): Selvage st, * p1, k1; rep from * to last 2 sts, p1, selvage st. Work in rib patt as set by last row until band meas 5 cm, ending with a RS row. Purl next WS row, then bind off all sts kwise. **Front and neckband:** With size 3.5 mm circular needle and RS facing, pick up and k 162 sts along straight edge and 74 sts along shaped edge of right front, 41 sts along back neck, 74 sts along shaped edge and 162 sts along straight edge of left front = 513 sts. Next row (WS): Selvage st, * p1, k1; rep from * to last 2 sts, p1, selvage st. Work in rib patt as set by last row until band meas 5 cm, ending with a RS row. Purl next WS row, then bind off all sts kwise. Sew on sleeves between markers. Sew side and sleeve seams. **Sleeve cuffs:** With size 3.5 mm dpns and RS facing, pick up and k 68 sts evenly around bottom edge of sleeve. Arrange sts evenly on 4 needles = 17 sts per needle, place beg of rnd marker and join for working in rnds. Work in rib patt for 5 cm. Bind off all sts in rib.

CROCHET CARDIGAN · SOTTILE

Design 34 – Classici 26



Chart

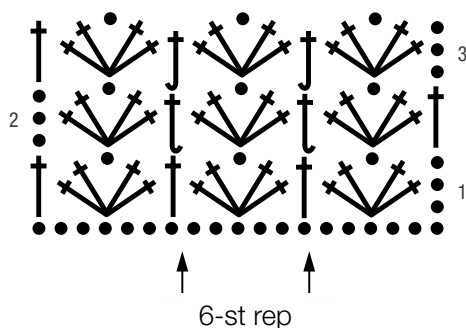


Chart key:

● = chain (ch)

↑ = double crochet (dc)

↑ = back post dc (bpdc): Yo hook, insert hook from back to front to back around post of st one row below, work dc as you would normally

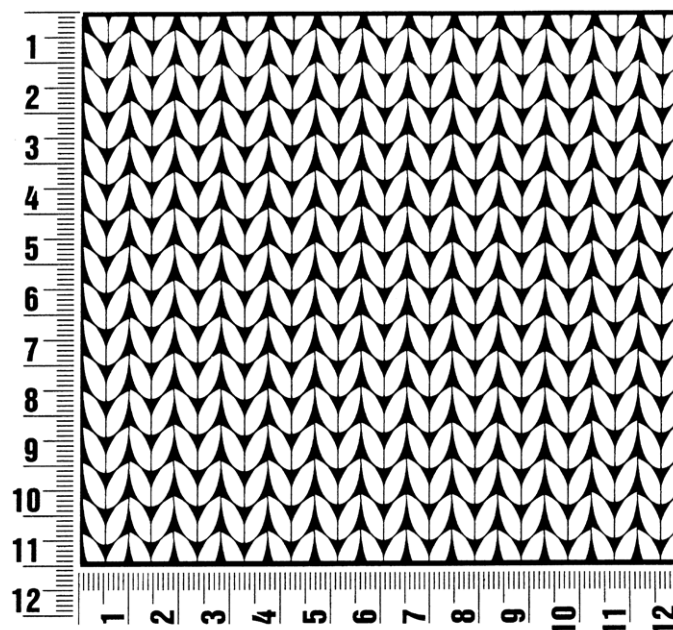
↑ = front post dc (fpdc): Yo hook, insert hook from front to back to front around post of st one row below, work dc as you would normally

↑ = [2 dc, ch 1, 2 dc] all in same st and/or sp

Gauge Swatch

Before you begin ...

...make a gauge swatch. Use the recommended needles, yarns and pattern stitch for your gauge swatch. It should measure approx. 12 cm x 12 cm. Cast-on and bind-off rows, as well as selvedge stitches should not be included in the measurement. Pin your swatch and block it as you would the finished pieces of the garment. Count stitches and rows over 10 cm. If your gauge swatch is too small, switch to larger needles. If your gauge swatch is too big, switch to smaller needles.



Abbreviations

beg = begin(ning) · **ch** = chain · **cont** = continue · **dec** = decreas(e)(ing) · **inc** = increas(e)(ing) · **k** = knit · **kwise** = as if to knit
meas = measures · **M1L** = lift strand between sts from front to back and knit this strand through the back loop · **M1R** = lift strand between sts from the back and knit this strand through the front loop · **patt** = pattern · **pm** = place marker · **p** = purl
pwise = as if to purl · **rem** = remain(ing) · **rep** = repeat(s) · **rev St st** = reverse stockinette stitch · **rnd(s)** = round(s) · **RS** = right side · **sc** = single crochet · **skp** = slip 1 stitch as if to knit, knit 1 stitch, pass slipped stitch over knitted stitch · **sk2p** = slip 1 stitch as if to knit, knit 2 together, pass slipped stitch over knitted stitch · **s2kp** = slip 2 stitches as if to knit, k 1 stitch, pass slipped stitches over knitted stitch · **sl** = slip · **st(s)** = stitch(es) · **St st** = stockinette stitch · **tbl** = through the back loop · **tog** = together · **wyib** = with yarn in back of work · **wyif** = with yarn in front of work · **WS** = wrong side · **yo(s)** = yarn over(s)

Publisher's Info

Publisher: Lana Grossa GmbH, Gaimersheim, www.lana-grossa.com

Photographer: Susan Buth, www.susanbuth.com