



© Lana Grossa GmbH

Design 26 – Gomitolo 13

---

# **CARDIGAN COTONELLA**

# CARDIGAN · COTONELLA

## Design 26 – Gomitolo 13



**Size** 36/38 (40/42, 44/46, 48/50)

Instructions are given for first size. Figures in parenthesis refer to larger sizes. When only one figure is given, it applies to all sizes.

**Materials:** **300 (300, 400, 400) g** of Lana Grossa **Cotonella** (100% Pima cotton; 280 m/100 g) in Yellow Green/Red/Wine/Fuchsia/Red Violet/Purple/Beige (**col 2**) and **200 (200, 300, 300) g** in Apricot/Salmon/Orange/Yellow Green/Dark Green/Black Green/Nut Brown (**col 6**). Size 4 and 4.5 mm needles; short and long size 4 mm circular needles.

**Twisted rib:** **Row 1 (RS):** \* P1, k1tbl; rep from \*. **Row 2 (WS):** \* P1tbl, k1; rep from \*. Rep rows 1 and 2 for twisted rib.

**St st:** K on RS, p on WS.

**Main patt:** Multiple of 4 + 1. **Rows 1 and 2 with col 6:** Work in St st. **Rows 3 – 6 with col 2:** Work in St st. **Row 7 (RS) with col 6:** K3, \* k1b (insert needle in st 5 rows below first st on left needle, pull yarn through, drop st off the left needle), k3; rep from \* to last 4 sts, k1b, k3. **Row 8 (WS) with col 6:** Purl. **Rows 9 – 12 with col 2:** Work in St st. **Row 13 (RS) with col 6:** K5, \* k1b, k3; rep from \* to last 2 sts, k2. **Row 14 (WS) with col 6:** Purl. Work rows 1 – 14 once, then rep rows 3 – 14.

**Garage st:** K every row.

**Gauge:** 18 sts and 36 rows = 10 x 10 cm in main patt on size 4.5 mm needles.

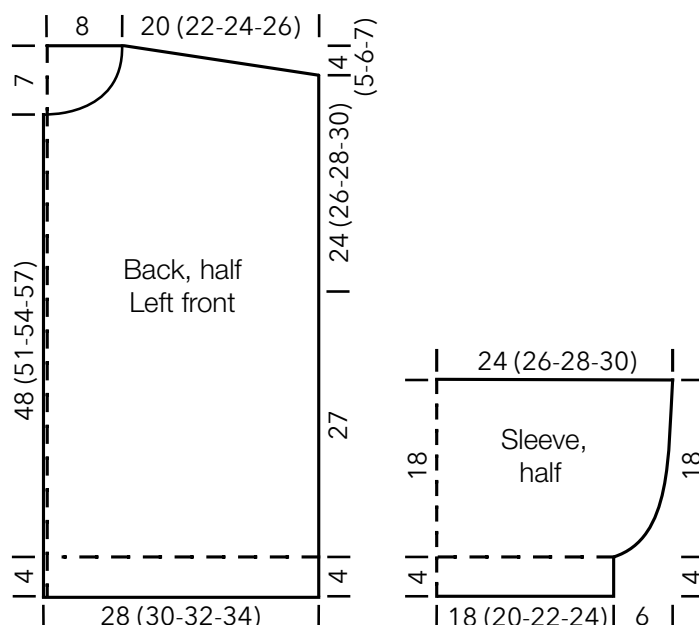
**Back:** With size 4 mm needles and col 2 cast on 98 (106, 114, 122) sts. Work in twisted rib for 4 cm, increasing 1 st at end of last WS row = 99 (107, 115, 123) sts. Change to size 4.5 mm needles. Work in main patt for 27 cm. Place marker in first and last st on last WS row to indicate beg of armholes. Cont until piece meas 24 (26, 28, 30) cm from armhole markers, ending with a WS row. Shape shoulders: At each shoulder edge bind off 4 sts 9 (10, 11, 12) times. Bind off rem 27 sts.

**Left front:** With size 4 mm needles and col 2 cast on 50 (54, 58, 62) sts. Work in twisted rib for 4 cm, increasing 1 st at end of last WS row = 51 (55, 59, 63) sts. Change to size 4.5 mm needles. Work in main patt for 27 cm. Place marker in last st on last WS row to indicate beg of armhole. Cont until piece meas 48 (51, 54, 57) cm from end of twisted rib, ending with a RS row. Shape neck: At beg of WS rows bind off 4 sts 1 time, 2 sts 2 times, 1 st 7 times and when same length as back to shoulder, shape shoulder at right edge same as for back. No sts rem.

**Right front:** Work same as left front, reversing all shaping.

**Sleeves:** With size 4 mm needles and col 2 cast on 60 (68, 76, 84) sts. Work in twisted rib for 4 cm, increasing 7 sts evenly across last WS row = 67 (75, 83, 91) sts. Change to size 4.5 mm needles. Work in main patt and shape sleeve as foll: Inc 1 st at each end of 5th row, then every 6th row 9 times = 87 (95, 103, 111) sts. Work increased sts into patt. Work even until piece meas 18 cm from end of twisted rib. Bind off all sts.

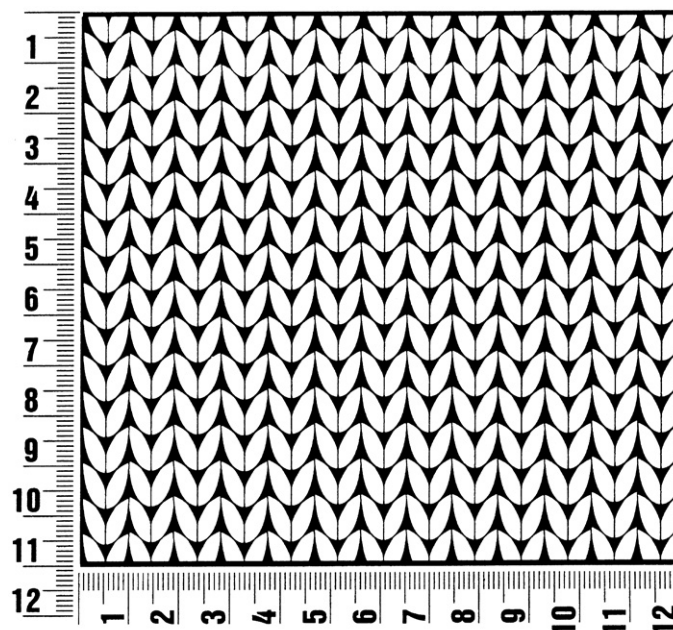
**Finishing:** Pin pieces to measurements and block. Sew shoulder seams. **Left front band:** With longer size 4 mm circular needle, col 2 and RS facing pick up and k 94 (99, 104, 109) sts evenly along left front edge. Work in garter st for 2 cm. Bind off all sts. Repeat for right front band. **Collar:** With shorter size 4 mm circular needle and col 2, beginning at center of right front band and ending at center of left front band pick up and k 71 sts evenly along neck edge. Work in garter st for 7 cm. Bind off all sts. Sew on sleeves between markers. Sew side and sleeve seams.



## Gauge Swatch

### Before you begin ...

...make a gauge swatch. Use the recommended needles, yarns and pattern stitch for your gauge swatch. It should measure approx. 12 cm x 12 cm. Cast-on and bind-off rows, as well as selvedge stitches should not be included in the measurement. Pin your swatch and block it as you would the finished pieces of the garment. Count stitches and rows over 10 cm. If your gauge swatch is too small, switch to larger needles. If your gauge swatch is too big, switch to smaller needles.



## Abbreviations

**beg** = begin(ning) · **ch** = chain · **cont** = continue · **dec** = decreas(e)(ing) · **inc** = increas(e)(ing) · **k** = knit · **kwise** = as if to knit  
**meas** = measures · **M1L** = lift strand between sts from front to back and knit this strand through the back loop · **M1R** = lift strand between sts from the back and knit this strand through the front loop · **patt** = pattern · **pm** = place marker · **p** = purl  
**pwise** = as if to purl · **rem** = remain(ing) · **rep** = repeat(s) · **rev St st** = reverse stockinette stitch · **rnd(s)** = round(s) · **RS** = right side · **sc** = single crochet · **skp** = slip 1 stitch as if to knit, knit 1 stitch, pass slipped stitch over knitted stitch · **sk2p** = slip 1 stitch as if to knit, knit 2 together, pass slipped stitch over knitted stitch · **s2kp** = slip 2 stitches as if to knit, k 1 stitch, pass slipped stitches over knitted stitch · **sl** = slip · **st(s)** = stitch(es) · **St st** = stockinette stitch · **tbl** = through the back loop · **tog** = together · **wyib** = with yarn in back of work · **wyif** = with yarn in front of work · **WS** = wrong side · **yo(s)** = yarn over(s)

### Publisher's Info

**Publisher:** Lana Grossa GmbH, Gaimersheim, [www.lana-grossa.com](http://www.lana-grossa.com)

**Photographer:** Wilfried Wulff, [www.wilfriedwulff.com](http://www.wilfriedwulff.com)