



© Lana Grossa GmbH

Design 11 – Lookbook 17

HOODIE GIGANTE

HOODIE • GIGANTE

Design 11 – Lookbook 17



Size 36/38 (40/42, 44/46, 48/50, 52/54)

Instructions are given for first size. Figures in parenthesis refer to larger sizes. When only one figure is given, it applies to all sizes.

Materials: 300 (300, 400, 400, 500) g of Lana Grossa **Gigante** (70% fine alpaca, 30% polyamide; 300 m/100 g) in Petrol/Sea Green/Olive/Light Olive (**col 8**). Size 5.5 and 6 mm needles; short size 5.5 mm circular needle; two 23 mm buttons.

Rib patt: * K2, p2; rep from *, end k2.

St st: K on RS, p on WS.

Selvage sts: On every row: Knit first and last st.

Short-rows: Always work a yo at beg of row. Work yo tog with next st as k2tog on RS rows, p2tog on WS rows as you come to them.

Gauge: 13 sts and 21 rows = 10 x 10 cm in St st on size 6 mm needles.

Back: With size 5.5 mm needles cast on 74 (80, 86, 92, 96) sts. Next row (RS): **For size 36/38 and 44/46:** * K2, p2; rep from *, end k2. **For size 40/42, 48/50 and 52/54:** Selvage st, * k2, p2; rep from * to last 3 sts, k2, selvage st. Cont in rib patt as set by last row until piece meas 4 cm from cast-on, ending with a WS row. Change to size 6 mm needles. Working first and last st as selvage sts, work in St st until piece meas 36 (37, 38, 39, 40) cm from cast-on. Place marker in first and last st on last WS row to indicate beg of armholes. Cont until piece meas 22 (24, 26, 28, 30) cm from armhole markers, ending with a WS row. Shape shoulders and neck: At each shoulder edge bind off 6 sts 4 times (6 sts 1 time, 7 sts 3 times / 7 sts 2 times, 8 sts 2 times / 8 sts 3 times, 9 sts 1 time / 8 sts 1 time, 9 sts 3 times). **At same time**, when working 2nd RS shoulder bind-off row, work neck as foll: Bind off center 18 sts. Working each side separately, bind off 4 sts at each neck edge 1 time. No sts rem.

Front: With size 5.5 mm needles cast on 74 (80, 86, 92, 96) sts. Work same as back to end of rib patt and piece meas 4 cm from cast-on. Change to size 6 mm needles. Working first and last st as selvage sts, work in St st and shape curved hem as foll: Next row (RS): Work to end of row. Next row (WS): Work first 6 (9, 12, 15, 18) sts, turn. Next row (RS): Yo, work to end of row. Next row (WS): Work first 9 (12, 15, 18, 21) sts, turn. Next row (RS): Yo, work to end of row. Continue working short-rows in this manner, working 3 additional sts on next

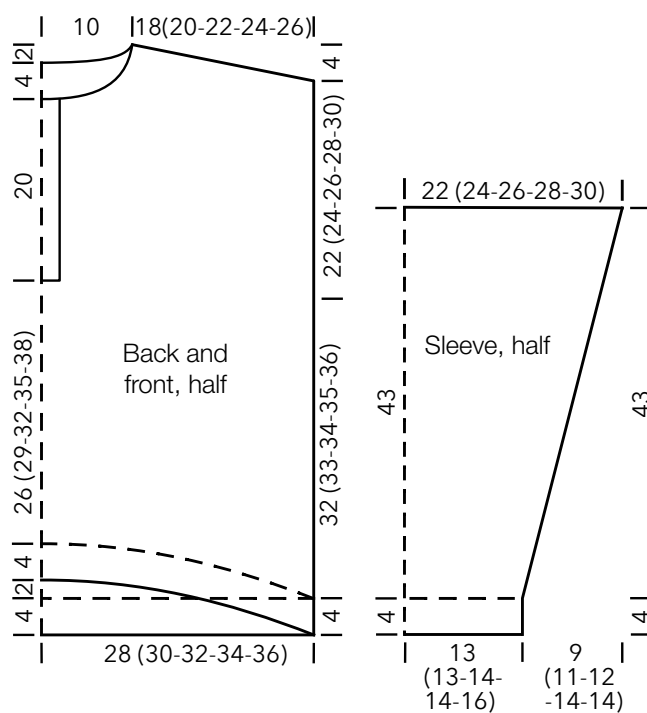
5 WS rows, = 24 (27, 30, 33, 36) sts are in work. Next row (RS): Yo, work to end of row. Next row (WS): Work to end of row. Next row (RS): Work first 6 (9, 12, 15, 18) sts, turn. Next row (WS): Yo, work to end of row. Next row (RS): Work first 9 (12, 15, 18, 21) sts, turn. Next row (WS): Yo, work to end of row. Continue working short-rows in this manner, working 3 additional sts on next 5 RS rows, = 24 (27, 30, 33, 36) sts are in work. Cont across all sts until piece meas 36 (37, 38, 39, 40) cm from cast-on, measured along side edge. Place marker in first and last st on last WS row to indicate beg of armholes. Cont for 0 (2, 4, 6, 8) cm, ending with a WS row. Divide for placket: Next row (RS): Work first 34 (37, 40, 43, 45) sts, place on hold and cont across rem sts for **right front** as foll: Work next 6 sts in rib patt, work 33 (36, 39, 42, 44) sts in St st, selvage st. Cont in patt as set by last row until right front meas 3 cm from divide, ending with a WS row. Next RS (buttonhole) row: Work rib patt over first 2 sts, bind off next 2 sts, patt to end. On foll WS row cast on 2 sts over bound-off sts. Work 2nd buttonhole in same way, spaced 6 cm apart. Cont until right front meas 20 cm from divide, ending with a WS row. Shape neck: Work first 6 sts and place on hold, work to end. At beg of RS rows, bind off 3 sts 2 times, 2 sts 2 times and when same length as back to shoulders, shape shoulder at left edge same as for back. No sts rem. **Left front:** Rejoin yarn and with size 6 mm needles, pick up and k 6 sts behind right front buttonhole placket, then work across held left front sts = 40 (43, 46, 49, 50) sts. Complete as given for right front, reversing shaping and omitting buttonholes.

Sleeves: With size 5.5 mm needles cast on 34 (34, 38, 38, 42) sts. Work in rib patt for 4 cm, increasing 2 (4, 2, 4, 2) sts evenly across last WS row = 36 (38, 40, 42, 44) sts. Change to size 6 mm needles. Work in St st and shape sleeve as foll: Inc 1 st at each end of 7th (5th, 5th, 3rd, 3rd) row, then every 8 (6, 6, 4, 4)th row 9 (11, 13, 15, 17) times = 56 (62, 68, 74, 80) sts. Work even until piece meas 43 cm from end of rib patt. Bind off all sts.

Finishing: Sew shoulder seams. **Hood:** With size 5.5 mm circular needle and RS facing, pick up and k 80 sts evenly along neck edge: 6 sts from holder, 18 sts along right front neck edge, 32 sts along back neck edge, 18 sts along left front neck edge and 6 sts from holder. Working first and last 6 sts in rib patt as established and rem sts in St st, work even until hood meas 20 cm from pick-up row, ending with a WS row. Place marker at center of work and shape hood as foll: Dec 1 st before and after marker every RS row until piece meas 31 cm from pick-up row. Bind off rem sts. Sew seam at top of hood. Sew on sleeves between markers. Sew side and sleeve seams. Sew on buttons.

HOODIE · GIGANTE

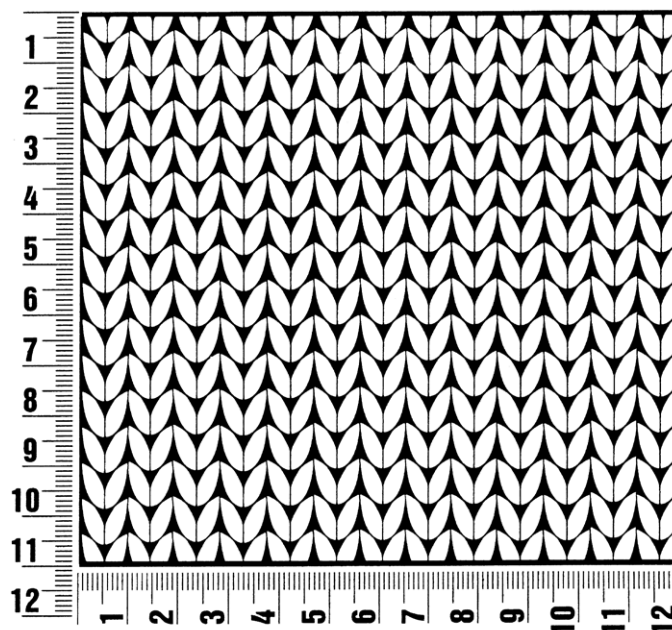
Design 11 – Lookbook 17



Gauge Swatch

Before you begin ...

...make a gauge swatch. Use the recommended needles, yarns and pattern stitch for your gauge swatch. It should measure approx. 12 cm x 12 cm. Cast-on and bind-off rows, as well as selvedge stitches should not be included in the measurement. Pin your swatch and block it as you would the finished pieces of the garment. Count stitches and rows over 10 cm. If your gauge swatch is too small, switch to larger needles. If your gauge swatch is too big, switch to smaller needles.



Abbreviations

beg = begin(ning) · **ch** = chain · **cont** = continue · **dec** = decreas(e)(ing) · **inc** = increas(e)(ing) · **k** = knit · **kwise** = as if to knit
meas = measures · **M1L** = lift strand between sts from front to back and knit this strand through the back loop · **M1R** = lift strand between sts from the back and knit this strand through the front loop · **patt** = pattern · **pm** = place marker · **p** = purl
pwise = as if to purl · **rem** = remain(ing) · **rep** = repeat(s) · **rev St st** = reverse stockinette stitch · **rnd(s)** = round(s) · **RS** = right side · **sc** = single crochet · **skp** = slip 1 stitch as if to knit, knit 1 stitch, pass slipped stitch over knitted stitch · **sk2p** = slip 1 stitch as if to knit, knit 2 together, pass slipped stitch over knitted stitch · **s2kp** = slip 2 stitches as if to knit, k 1 stitch, pass slipped stitches over knitted stitch · **sl** = slip · **st(s)** = stitch(es) · **St st** = stockinette stitch · **tbl** = through the back loop · **tog** = together · **wyib** = with yarn in back of work · **wyif** = with yarn in front of work · **WS** = wrong side · **yo(s)** = yarn over(s)

Publisher's Info

Publisher: Lana Grossa GmbH, Gaimersheim, www.lana-grossa.com

Photographer: Wilfried Wulff, www.wilfriedwulff.com