



© Lana Grossa GmbH

Design 16 – Lookbook 17

JACKET ALPACA AIR

JACKET · ALPACA AIR

Design 16 – Lookbook 17



Size 36/38 (40/42, 44/46, 48/50)

Instructions are given for first size. Figures in parenthesis refer to larger sizes. When only one figure is given, it applies to all sizes.

Materials: 350 (400, 450, 500) g of Lana Grossa **Alpaca Air** (62% baby alpaca, 11% fine Merino wool, 27% polyamide; 140 m/50 g) in Off White (**col 1**). Size 5 mm needles; four 22 mm buttons in brown.

St st: K on RS, p on WS.

Rev St st: P on RS, k on WS.

Two-stitch selvage: At beg of row, sl 1 pwise wyif, k1. At end of row, sl 1 pwise wyif, k1.

9-st right front band: WS row: [K1tbl, p1tbl] 3 times, k1tbl, two-stitch selvage. RS row: Two-stitch selvage, [p1tbl, k1tbl] 3 times, p1tbl.

Buttonhole: Patt over first 5 sts, bind off 1 st, work to end. On foll WS row cast on 1 st over bound-off st.

Gauge: 16 sts and 22 rows = 10 x 10 cm in St st on size 5 mm needles.

Back: With size 5 mm needles cast on 102 (108, 114, 120) sts. Next row (WS): * P1, k1; rep from * to end. Work in St st until piece meas 36 cm from cast-on. Place marker in first and last st on last WS row to indicate beg of armholes. Cont until piece meas 19 (21, 23, 25) cm from armhole markers, ending with a WS row. Shape shoulders: At each shoulder edge bind off 7 sts 3 times, 8 sts 2 times (8 sts 5 times / 8 sts 2 times, 9 sts 3 times / 9 sts 4 times, 10 sts 1 time). Bind off rem 28 sts.

Left front: With size 5 mm needles cast on 80 (84, 88, 92) sts. Next row (WS): * P1, k1; rep from * to end. Next row (RS): Work 77 (81, 85, 89) sts in St st, 1 st in rev St st, two-stitch selvage. Cont in patt as set by last row until piece meas 36 cm from cast-on. Place marker in last st on last WS row to indicate beg of armhole. Cont until piece meas 16 (18, 20, 22) cm from armhole marker, ending with a WS row. Shape neck and shoulders: Next row (RS): Work first 47 (50, 53, 56) sts, bind off next 14 sts, work to end. Working each side separately, bind off 3 sts at each neck edge 1 time, 2 sts 1 time, 1 st 2 times. At same time, when piece meas 3 cm from beg of neck shaping, shape shoulders as foll: Shape shoulder at right edge same as for back, shape shoulder at left edge as foll: At beg of WS rows bind off 7 sts 1 time, 8 sts 1 time (8 sts 2 times / 8 sts 1 time, 9 sts 1 time / 9 sts 2 times).

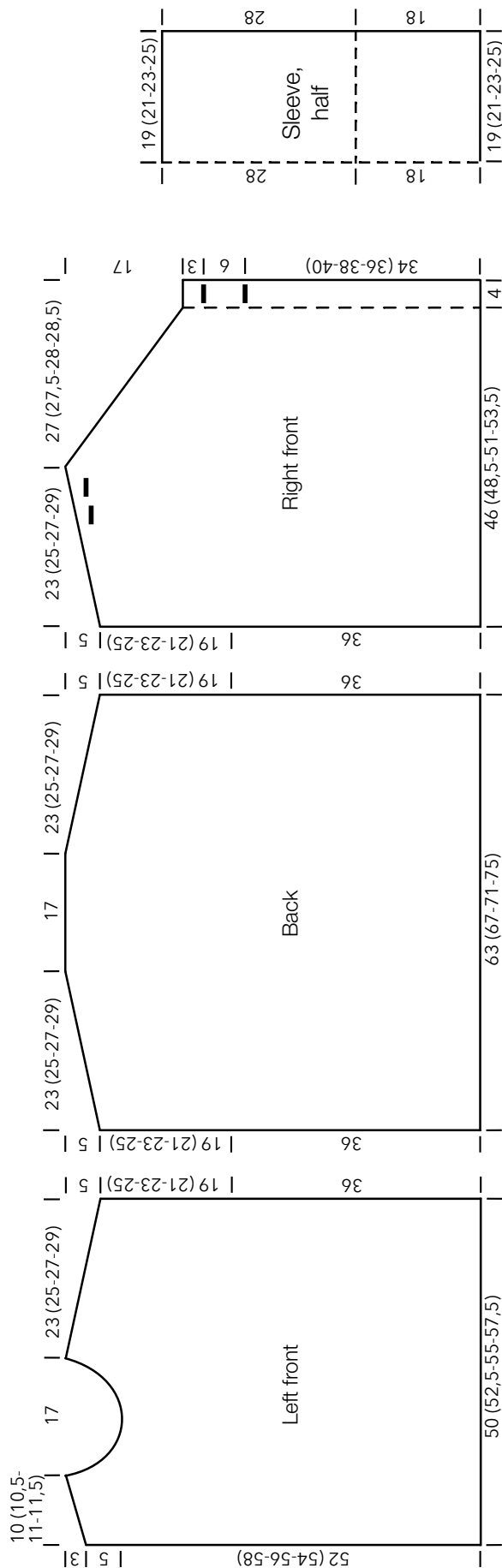
Right front: With size 5 mm needles cast on 80 (84, 88, 92) sts. Next row (WS): * P1, k1; rep from * to last 9 sts, work 9-st right front band. Next row (RS): Work 9-st right front band, work in St st to end. **For size 36/38:** Cont in patt as set by last row until piece meas 34 cm from cast-on, ending with a WS row. Next row (RS): Work buttonhole. Work a 2nd buttonhole 6 cm apart and when piece meas 36 cm from cast-on, place armhole marker at left edge. **For size 40/42:** Cont in patt as set by last row until piece meas 36 cm from cast-on. Place armhole marker at left edge. Next row (RS): Work buttonhole. Work a 2nd buttonhole 6 cm apart. **For size 44/46:** Cont in patt as set by last row until piece meas 36 cm from cast-on. Place armhole marker at left edge. Cont until piece meas 38 cm from cast-on, ending with a WS row. Next row (RS): Work buttonhole. Work a 2nd buttonhole 6 cm apart. **For size 48/50:** Cont in patt as set by last row until piece meas 36 cm from cast-on. Place armhole marker at left edge. Cont until piece meas 40 cm from cast-on, ending with a WS row. Next row (RS): Work buttonhole. Work a 2nd buttonhole 6 cm apart. **For all sizes:** Cont until piece meas 3 cm from 2nd buttonhole, ending with a WS row. Shape neck: At beg of RS rows bind off 7 (8, 9, 10) sts 1 time, 2 sts 18 times and when piece meas 19 (21, 23, 25) cm from armhole marker, work 2 more buttonholes and shape shoulder as foll: Next row (RS): Work first 20 sts, k2tog, skp, work to end. Next row (WS): Bind off 7 (8, 8, 9) shoulder sts, work to last 22 sts, cast on 2 sts over decreased sts, work to end. Next row (RS): Work first 10 sts, k2tog, skp, work to end. Next row (WS): Bind off 7 (8, 8, 9) shoulder sts, work to last 12 sts, cast on 2 sts over decreased sts, work to end. Complete shoulder shaping: At beg of WS rows bind off 7 sts 1 time, 8 sts 2 times (8 sts 3 times / 9 sts 3 times / 9 sts 2 times, 10 sts 1 time).

Sleeves: With size 5 mm needles cast on 60 (66, 72, 78) sts. Next row (WS): * P1, k1; rep from * to end. Work in rev St st until piece meas 18 cm from cast-on, ending with a WS row. Work in St st until piece meas 46 cm from cast-on. Bind off all sts.

Finishing: Sew shoulder seams. Sew on sleeves between markers. Sew side and sleeve seams. Sew all seams with the exception of the rev St st portion of sleeves with mattress st and from WS (so seam forms a ridge on RS). Sew rev St st portion of sleeves with mattress st and from RS. Sew buttons to left front to correspond with buttonholes. Sew buttons to short shoulder edge of left front to correspond with buttonholes on right front.

JACKET · ALPACA AIR

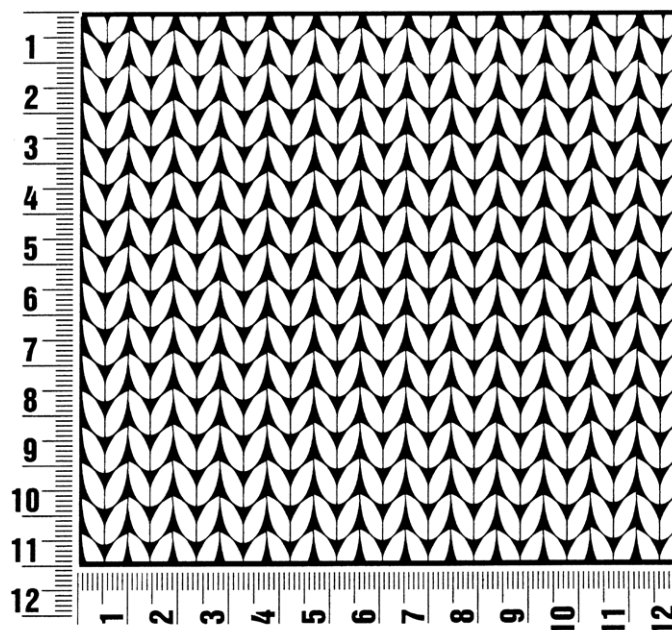
Design 16 – Lookbook 17



Gauge Swatch

Before you begin ...

...make a gauge swatch. Use the recommended needles, yarns and pattern stitch for your gauge swatch. It should measure approx. 12 cm x 12 cm. Cast-on and bind-off rows, as well as selvedge stitches should not be included in the measurement. Pin your swatch and block it as you would the finished pieces of the garment. Count stitches and rows over 10 cm. If your gauge swatch is too small, switch to larger needles. If your gauge swatch is too big, switch to smaller needles.



Abbreviations

beg = begin(ning) · **ch** = chain · **cont** = continue · **dec** = decreas(e)(ing) · **inc** = increas(e)(ing) · **k** = knit · **kwise** = as if to knit
meas = measures · **M1L** = lift strand between sts from front to back and knit this strand through the back loop · **M1R** = lift strand between sts from the back and knit this strand through the front loop · **patt** = pattern · **pm** = place marker · **p** = purl
pwise = as if to purl · **rem** = remain(ing) · **rep** = repeat(s) · **rev St st** = reverse stockinette stitch · **rnd(s)** = round(s) · **RS** = right side · **sc** = single crochet · **skp** = slip 1 stitch as if to knit, knit 1 stitch, pass slipped stitch over knitted stitch · **sk2p** = slip 1 stitch as if to knit, knit 2 together, pass slipped stitch over knitted stitch · **s2kp** = slip 2 stitches as if to knit, k 1 stitch, pass slipped stitches over knitted stitch · **sl** = slip · **st(s)** = stitch(es) · **St st** = stockinette stitch · **tbl** = through the back loop · **tog** = together · **wyib** = with yarn in back of work · **wyif** = with yarn in front of work · **WS** = wrong side · **yo(s)** = yarn over(s)

Publisher's Info

Publisher: Lana Grossa GmbH, Gaimersheim, www.lana-grossa.com

Photographer: Wilfried Wulff, www.wilfriedwulff.com