



© Lana Grossa GmbH

Design 14 – Classici 27

PULLOVER
CASHMERE 16 FINE & SILKHAIR

PULLOVER · CASHMERE 16 FINE & SILKHAIR

Design 14 – Classici 27



Size 36/38 (40/42, 44)

Instructions are given for first size. Figures in parenthesis refer to larger sizes. When only one figure is given, it applies to all sizes.

Materials: 250 (300, 350) g of Lana Grossa **Cashmere 16 Fine** (80% Merino wool, 10% cashmere, 10% polyamide; 320 m/50 g) in Off White (**col 9**) and 175 (225, 250) g of Lana Grossa **Silkhair** (70% superkid mohair, 30% silk; 210 m/25 g) in Black Brown (**col 209**). Size 4.5 and 5 mm needles; size 4.5 mm circular needle, 40 cm long; cable needle [cn].

Note: Work with 1 strand of each yarn held tog throughout = 2 strands held tog.

Rib patt: P2, k2.

St st: K on RS, p on WS.

Rev St st: P on RS, k on WS.

Cable A: Worked over 4 sts. Rows 1 and 5 (RS): K4. Rows 2, 4, 6 (WS): P4. Row 3 (RS): Sl 2 sts to cn and hold in front of work, k2, then k2 from cn. Rep rows 1 – 6.

Cable B: Worked over 4 sts. Rows 1 and 5 (RS): K4. Rows 2, 4, 6 (WS): P4. Row 3 (RS): Sl 2 sts to cn and hold in back of work, k2, then k2 from cn. Rep rows 1 – 6.

Selvage sts: On every row: Knit first and last st.

Full-fashion decrease (dbl decrease) 1: At beg of RS row, selvage st, 2 sts in rev St st, 4 sts cable A, 2 sts in rev St st, skp (sk2p); at end of RS row, work to last 11 (12) sts, k2tog (k3tog), 2 sts in rev St st, 4 sts cable B, 2 sts in rev St st, selvage st – 1 (2) st(s) decreased at each edge.

Full-fashion decrease (dbl decrease) 2: At beg of RS row, selvage st, 1 st in St st, skp (sk2p); at end of RS row, work to last 4 (5) sts, k2tog (k3tog), 1 st in St st, selvage st – 1 (2) st(s) decreased at each edge.

Full-fashion increase: On RS row: M1R, 2 sts in from each edge.

Gauge: 19 sts and 25 rows = 10 x 10 cm in St st with size 5 mm needles and 2 strands held tog.

Back: With size 4.5 mm needles and 2 strands held tog cast on 106 (114, 122) sts. Next row (WS): Selvage st, p1, * k2, p2; rep from * to last 4 sts, k2, p1, selvage st. Work in rib patt as set by last row until piece meas 9 cm from cast-on, decreasing 10 sts evenly across last WS row = 96 (104, 112) sts. Change to size 5 mm needles. Maintaining selvage sts, work in St st and shape sides as foll: Working full-fashion inc, inc 1 st at each end of 9th row, then every 12th row 5 times = 108 (116, 124) sts. Work even until piece meas 37 cm from cast-on, ending with a WS row. Shape raglan: Bind off 2 sts at beg of next 2 rows = 104 (112, 120) sts. Working full-fashion dec (dbl dec) 1, dec 1 st at each end of next 17 (17, 15) RS rows, 2 sts at each end of next 8 (10, 13) RS rows and when piece meas 58 (59, 60) cm from cast-on, bind off rem 36 sts.

Front: Work same as back to raglan, ending with a WS row. Shape raglan: Bind off 2 sts at beg of next 2 rows = 104 (112, 120) sts. Working full-fashion dec (dbl dec) 1, dec 1 st at each end of next 17 (17, 15) RS rows, 2 sts at each end of next 6 (8, 11) RS rows. At same time, when piece meas 51 (52, 53) cm from cast-on, shape neck as foll: Next row (RS): Bind off center 16 sts. Working each side separately, bind off 3 sts at each neck edge 1 time, 2 sts 2 times, 1 st 3 times, 4 sts 1 time.

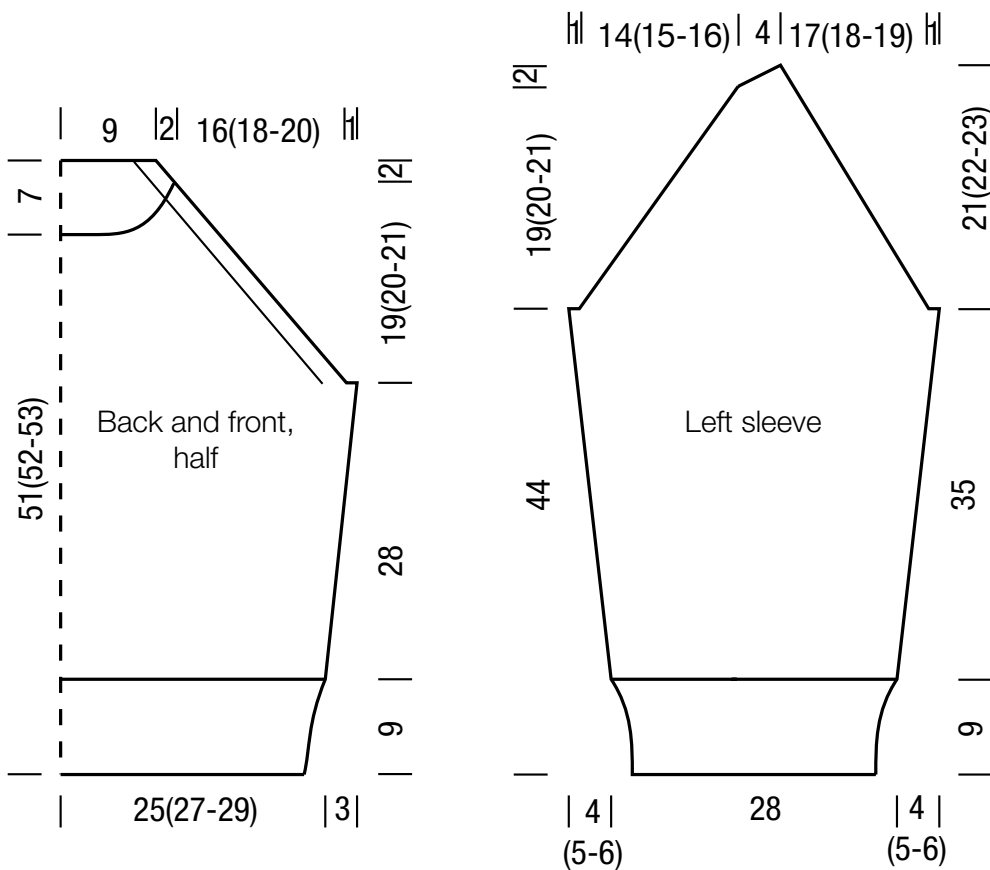
Left sleeve: With size 4.5 mm needles and 2 strands held tog cast on 54 sts. Next row (WS): Selvage st, p1, * k2, p2; rep from * to last 4 sts, k2, p1, selvage st. Work in rib patt as set by last row until piece meas 9 cm from cast-on, ending with a WS row. Change to size 5 mm needles. Maintaining selvage sts, work in St st and shape sleeve as foll: Working full-fashion inc, inc 1 st at each end of 13 (11, 9)th row, then every 12th row 3 times, then every 10th row 4 times (then every alt 8th and 10th row 9 times / then every 8th row 9 times, then every 6th row 2 times) = 70 (74, 78) sts. Work even until piece meas 44 cm from cast-on, ending with a WS row. Shape sleeve cap: Bind off 2 sts at beg of next 2 rows = 66 (70, 74) sts. Working full-fashion dec (dbl dec) 2, dec 1 st at each end of next 21 RS rows, 2 sts at each end of next 3 (4, 5) RS rows. Bind off 2 sts at beg of next WS row, dec 2 sts at beg of next 4 rows. Bind off rem 2 sts.

Right sleeve: Work same as left sleeve, reversing cap shaping.

Finishing: Pin pieces to measurements and block. Sew raglan, side and sleeve seams. Collar: With size 4.5 mm circular needle and 2 strands held tog, pick up and k 92 sts evenly around neck edge. Place beg of rnd marker and join for working in rnds. Work in rib patt for 8 cm. Loosely bind off all sts in rib.

PULLOVER · CASHMERE 16 FINE & SILKHAIR

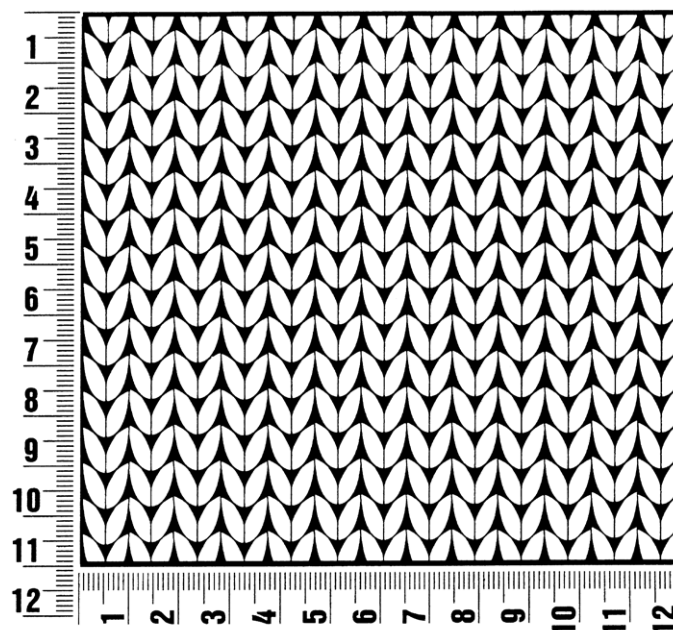
Design 14 – Classici 27



Gauge Swatch

Before you begin ...

...make a gauge swatch. Use the recommended needles, yarns and pattern stitch for your gauge swatch. It should measure approx. 12 cm x 12 cm. Cast-on and bind-off rows, as well as selvage stitches should not be included in the measurement. Pin your swatch and block it as you would the finished pieces of the garment. Count stitches and rows over 10 cm. If your gauge swatch is too small, switch to larger needles. If your gauge swatch is too big, switch to smaller needles.



Abbreviations

beg = begin(ning) · **ch** = chain · **cont** = continue · **dec** = decreas(e)(ing) · **inc** = increas(e)(ing) · **k** = knit · **kwise** = as if to knit
meas = measures · **M1L** = lift strand between sts from front to back and knit this strand through the back loop · **M1R** = lift strand between sts from the back and knit this strand through the front loop · **patt** = pattern · **pm** = place marker · **p** = purl
pwise = as if to purl · **rem** = remain(ing) · **rep** = repeat(s) · **rev St st** = reverse stockinette stitch · **rnd(s)** = round(s) · **RS** = right side · **sc** = single crochet · **skp** = slip 1 stitch as if to knit, knit 1 stitch, pass slipped stitch over knitted stitch · **sk2p** = slip 1 stitch as if to knit, knit 2 together, pass slipped stitch over knitted stitch · **s2kp** = slip 2 stitches as if to knit, k 1 stitch, pass slipped stitches over knitted stitch · **sl** = slip · **st(s)** = stitch(es) · **St st** = stockinette stitch · **tbl** = through the back loop · **tog** = together · **wyib** = with yarn in back of work · **wyif** = with yarn in front of work · **WS** = wrong side · **yo(s)** = yarn over(s)

Publisher's Info

Publisher: Lana Grossa GmbH, Gaimersheim, www.lana-grossa.com

Photographer: Susan Buth