



© Lana Grossa GmbH

Design 26 – Filati Journal 68

PULLOVER SUPERKID SETA

PULLOVER · SUPERKID SETA

Design 26 – Filati Journal 68



Size 36/38 (40/42, 44/46, 48/50, 52/54)

Instructions are given for first size. Figures in parenthesis refer to larger sizes. When only one figure is given, it applies to all sizes.

Materials: 200 (225, 250, 275, 300) g of Lana Grossa **Superkid Seta** (65% superkid mohair, 35% silk; 100 m/25 g) in Orchid (col 7). Size 4 and 5 mm needles; short size 4 mm circular needle.

Twisted rib: Row 1 (RS): P1, k1tbl. Row 2 (WS): P1tbl, k1. Rep rows 1 and 2 for twisted rib.

St st: K on RS, p on WS.

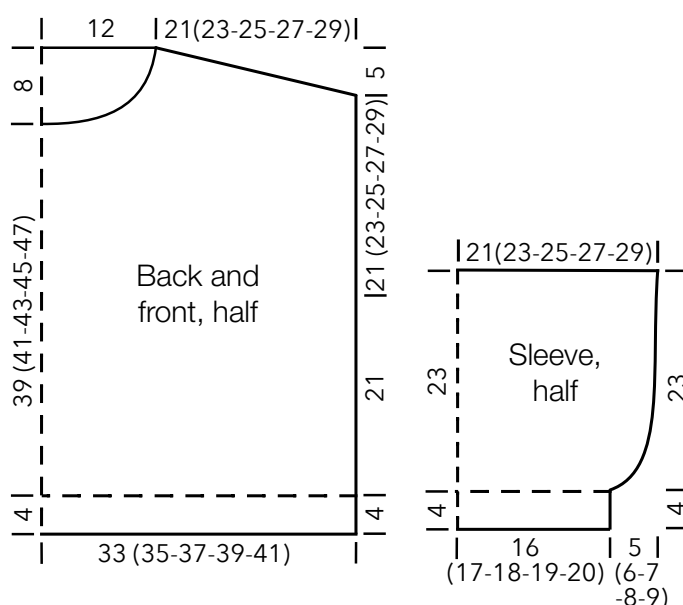
Gauge: 16 sts and 22 rows = 10 x 10 cm in St st on size 5 mm needles.

Back: With size 4 mm needles cast on 108 (114, 120, 126, 132) sts. Work in twisted rib for 4 cm, ending with a WS row. Change to size 5 mm needles. Work in St st for 21 cm. Place marker in first and last st on last WS row to indicate beg of armholes. Cont until piece meas 21 (23, 25, 27, 29) cm from armhole markers, ending with a WS row. Shape shoulders: At each shoulder edge bind off 7 sts 5 times (7 sts 2 times, 8 sts 3 times / 8 sts 4 times, 9 sts 1 time / 8 sts 1 times, 9 sts 4 times / 9 sts 3 times, 10 sts 2 times). Bind off rem 38 sts.

Front: Work same as back until piece meas 18 (20, 22, 24) cm from armhole markers, ending with a WS row. Shape neck: Next row (RS): Bind off center 14 sts. Working each side separately, bind off 3 sts at each neck edge 1 time, 2 sts 3 times, 1 st 3 times and when same length as back to shoulders, shape shoulders same as for back. No sts rem.

Sleeves: With size 4 mm needles cast on 52 (56, 60, 64, 68) sts. Work in twisted rib for 4 cm, ending with a WS row. Change to size 5 mm needles. Work in St st for 23 cm, increasing 18 (20, 22, 24, 26) sts evenly across first row = 70 (76, 82, 88, 94) sts. Bind off all sts.

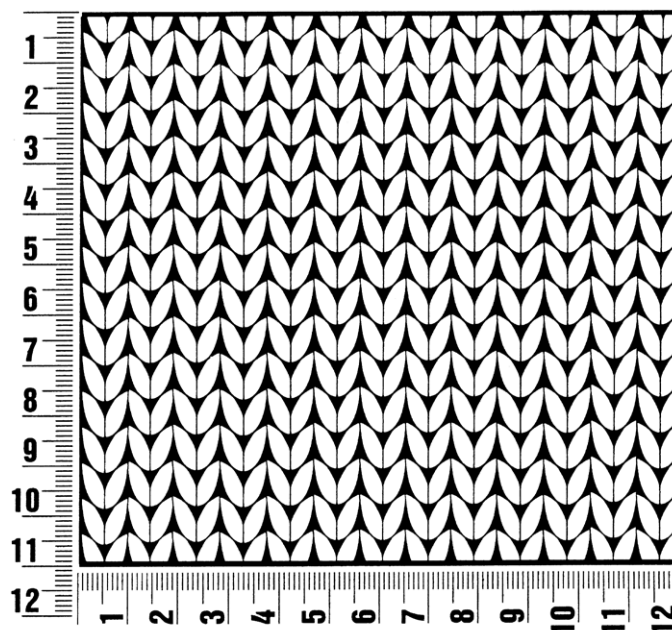
Finishing: Pin pieces to measurements and block. Sew shoulder seams. **Neckband:** With size 4 mm circular needle, pick up and k 118 sts evenly around neck edge. Place beg of rnd marker and join for working in rnds. Purl 1 rnd. Work in twisted rib for 2.5 cm. Next rnd: K2tog around and bind off at same time. Sew on sleeves between markers. Sew side and sleeve seams.



Gauge Swatch

Before you begin ...

...make a gauge swatch. Use the recommended needles, yarns and pattern stitch for your gauge swatch. It should measure approx. 12 cm x 12 cm. Cast-on and bind-off rows, as well as selvedge stitches should not be included in the measurement. Pin your swatch and block it as you would the finished pieces of the garment. Count stitches and rows over 10 cm. If your gauge swatch is too small, switch to larger needles. If your gauge swatch is too big, switch to smaller needles.



Abbreviations

beg = begin(ning) · **ch** = chain · **cont** = continue · **dec** = decreas(e)(ing) · **inc** = increas(e)(ing) · **k** = knit · **kwise** = as if to knit
meas = measures · **M1L** = lift strand between sts from front to back and knit this strand through the back loop · **M1R** = lift strand between sts from the back and knit this strand through the front loop · **patt** = pattern · **pm** = place marker · **p** = purl
pwise = as if to purl · **rem** = remain(ing) · **rep** = repeat(s) · **rev St st** = reverse stockinette stitch · **rnd(s)** = round(s) · **RS** = right side · **sc** = single crochet · **skp** = slip 1 stitch as if to knit, knit 1 stitch, pass slipped stitch over knitted stitch · **sk2p** = slip 1 stitch as if to knit, knit 2 together, pass slipped stitch over knitted stitch · **s2kp** = slip 2 stitches as if to knit, k 1 stitch, pass slipped stitches over knitted stitch · **sl** = slip · **st(s)** = stitch(es) · **St st** = stockinette stitch · **tbl** = through the back loop · **tog** = together · **wyib** = with yarn in back of work · **wyif** = with yarn in front of work · **WS** = wrong side · **yo(s)** = yarn over(s)

Publisher's Info

Publisher: Lana Grossa GmbH, Gaimersheim, www.lana-grossa.com
Photographer: Nicolas Olonetzky, www.nicolasolonetzky.com