



© Lana Grossa GmbH

Design 5 – Lookbook 18

PULLOVER SILKHAIR

PULLOVER · SILKHAIR

Design 5 – Lookbook 18



Size 36/38 (40/42, 44/46, 48/50)

Instructions are given for first size. Figures in parenthesis refer to larger sizes. When only one figure is given, it applies to all sizes.

Materials: **25 (50, 50, 50) g** of Lana Grossa **Silkhair** (70% superkid mohair, 30% silk; 210 m/25 g) in Charcoal (**col 183**); **25 (25, 25, 25) g each** in Azure Blue (**col 203**), Salmon (**col 212**), Yolk (**col 170**), Apricot (**col 199**), Pale Green (**col 211**), Grey Beige (**col 184**) and Pale Blue (**col 201**); **75 (75, 75, 75) g** in White (**col 117**). Size 3 and 4 mm needles; short size 3 mm circular needle.

Note: Work with 2 strands held tog as given in instructions.

Rib patt: P1, k1.

Slip st patt: Multiple of 6 + 1. **Row 1 (RS):** K2, * sl 3 pwise wyib, k3; rep from * to last 5 sts, sl 3 pwise wyib, k2. **Row 2 (WS):** P3, * sl 1 pwise wyif, p5; rep from * to last 4 sts, sl 1 pwise wyif, p3. **Rows 3, 7, 9 (RS):** Knit all sts. **Row 4, 8, 10 (WS):** Purl all sts. **Row 5 (RS):** K5, * sl 3 pwise wyib, k3; rep from * to last 2 sts, k2. **Row 6 (WS):** P6, * sl 1 pwise wyif, p5; rep from *, end p1. Rep rows 1 – 10 for slip st patt.

Color progression:

Work 4 rows with 1 strand each Charcoal (col 183) and Azure Blue (col 203) held tog,
6 rows with 2 strands Azure Blue (col 203) held tog,
4 rows with 1 strand each Azure Blue (col 203) and Salmon (col 212) held tog,
6 rows with 2 strands Salmon (col 212) held tog,
4 rows with 1 strand each Salmon (col 212) and Yolk (col 170) held tog,
6 rows with 2 strands Yolk (col 170) held tog,
4 rows with 1 strand each Yolk (col 170) and Apricot (col 199) held tog,
6 rows with 2 strands Apricot (col 199) held tog,
4 rows with 1 strand each Apricot (col 199) and Pale Green (col 211) held tog,
6 rows with 2 strands Pale Green (col 211) held tog,
4 rows with 1 strand each Pale Green (col 211) and Grey Beige (col 184) held tog,
6 rows with 2 strands Grey Beige (col 184) held tog,
4 rows with 1 strand each Grey Beige (col 184) and Pale Blue (col 201) held tog,
6 rows with 2 strands Pale Blue (col 201) held tog,
4 rows with 1 strand each Pale Blue (col 201) and White (col 117) held tog,
6 rows with 2 strands White (col 117) held tog = 80 rows.

St st: K on RS, p on WS.

Gauge: 18 sts and 25 rows = 10 x 10 cm in St st with size 4 mm needles and 2 strands held tog.

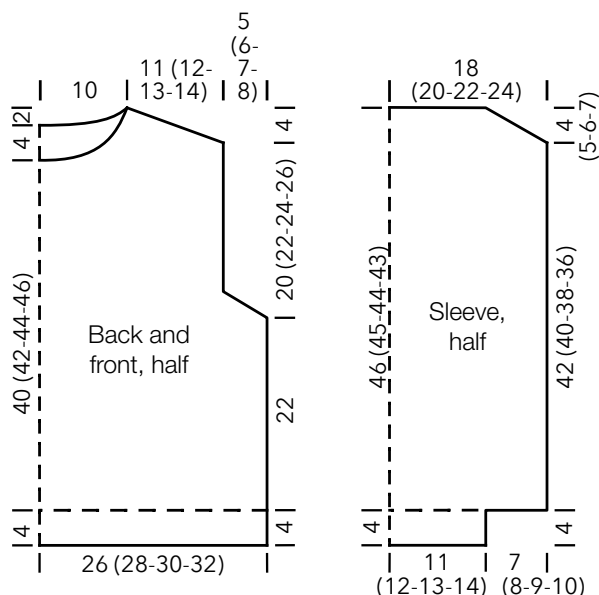
Back: With size 3 mm needles and 2 strands Charcoal held tog cast on 97 (103, 109, 115) sts. Next row (RS): * P1, k1; rep from *, end p1. Work in rib patt as set by last row until piece meas 4

cm from cast-on, ending with a WS row. Change to size 4 mm needles. Work in St st for 2 rows. Work in slip st patt and color progression until piece meas 26 cm from cast-on, ending with a WS row. Shape armholes: Bind off 5 sts at beg of next 2 rows, 2 sts at beg of next 4 (6, 8, 10) rows = 79 (8, 83, 85) sts. Work even in slip st patt until color progression is complete = 80 rows. Work incomplete patt reps at beg and end of rows in St st. Work remainder of back in St st with 2 strands White held tog and when armhole meas 20 (22, 24, 26) cm and last row worked is a WS row, shape shoulders as foll: At each shoulder edge bind off 4 sts 4 times, then 4 (5, 6, 7) sts 1 time. **At same time**, when working 2nd RS shoulder bind-off row, work neck as foll: Bind off center 27 sts. Working each side separately, bind off 3 sts at each neck edge 1 time, 2 sts 1 time, 1 st 1 time. No sts rem.

Front: Work same as back until armhole meas 18 (20, 22, 24) cm, ending with a WS row. Shape neck: Next row (RS): Bind off center 17 sts. Working each side separately, bind off 3 sts at each neck edge 1 time, 2 sts 3 times, 1 st 2 times and when same length as back to shoulders, shape shoulders same as for back. No sts rem.

Sleeves: With size 3 mm needles and 2 strands Charcoal held tog cast on 41 (43, 45, 47) sts. Next row (RS): * P1, k1; rep from *, end p1. Work in rib patt as set by last row until piece meas 4 cm from cast-on, ending with a WS row. Change to size 4 mm needles. Work in St st for 2 rows, increasing 26 (30, 34, 38) sts evenly across first row = 67 (73, 79, 85) sts. Work in slip st patt and color progression for 80 rows. Work remainder of sleeve in St st with 2 strands White held tog and when sleeve meas 46 (44, 42, 40) cm from cast-on and last row worked is a WS row, shape sleeve cap as foll: Bind off 5 (5, 7, 8) sts at beg of next 12 rows. Bind off rem 47 (49, 51, 53) sts.

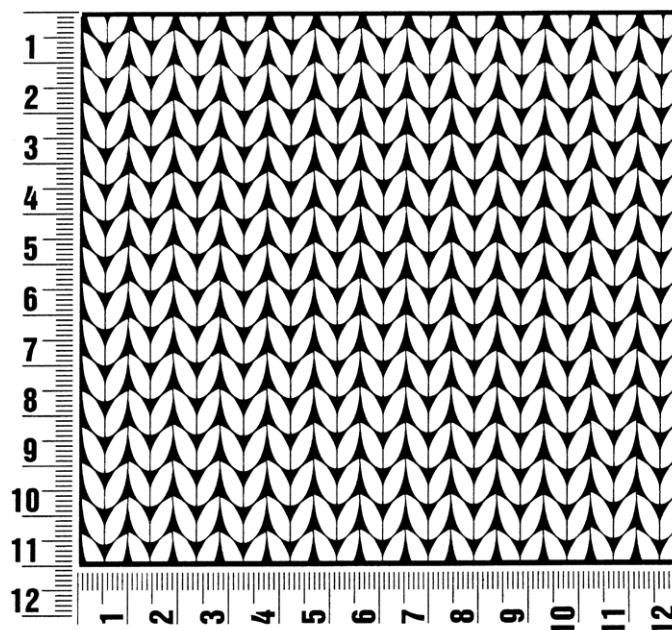
Finishing: Pin pieces to measurements and block. Sew shoulder seams. **Neckband:** With size 3 mm circular needle and 2 strands White held tog, pick up and k 110 sts evenly around neck edge. Place beg of rnd marker and join for working in rnds. Work in rib patt for 2.5 cm. Bind off all sts. Sew in sleeves. Sew side and sleeve seams.



Gauge Swatch

Before you begin ...

...make a gauge swatch. Use the recommended needles, yarns and pattern stitch for your gauge swatch. It should measure approx. 12 cm x 12 cm. Cast-on and bind-off rows, as well as selvedge stitches should not be included in the measurement. Pin your swatch and block it as you would the finished pieces of the garment. Count stitches and rows over 10 cm. If your gauge swatch is too small, switch to larger needles. If your gauge swatch is too big, switch to smaller needles.



Abbreviations

beg = begin(ning) · **ch** = chain · **cont** = continue · **dec** = decreas(e)(ing) · **inc** = increas(e)(ing) · **k** = knit · **kwise** = as if to knit
meas = measures · **M1L** = lift strand between sts from front to back and knit this strand through the back loop · **M1R** = lift strand between sts from the back and knit this strand through the front loop · **patt** = pattern · **pm** = place marker · **p** = purl
pwise = as if to purl · **rem** = remain(ing) · **rep** = repeat(s) · **rev St st** = reverse stockinette stitch · **rnd(s)** = round(s) · **RS** = right side · **sc** = single crochet · **skp** = slip 1 stitch as if to knit, knit 1 stitch, pass slipped stitch over knitted stitch · **sk2p** = slip 1 stitch as if to knit, knit 2 together, pass slipped stitch over knitted stitch · **s2kp** = slip 2 stitches as if to knit, k 1 stitch, pass slipped stitches over knitted stitch · **sl** = slip · **st(s)** = stitch(es) · **St st** = stockinette stitch · **tbl** = through the back loop · **tog** = together · **wyib** = with yarn in back of work · **wyif** = with yarn in front of work · **WS** = wrong side · **yo(s)** = yarn over(s)

Publisher's Info

Publisher: Lana Grossa GmbH, Gaimersheim, www.lana-grossa.com

Photographer: Nicolas Olonetzky, www.olonetzky.com