



© Lana Grossa GmbH

Design 25 – natural KNITS 01

---

**PULLOVER**  
**SUMMER CASHMERE**

# PULLOVER · SUMMER CASHMERE

## Design 25 – natural KNITS 01



**Size** 36/38 (40/42, 44/46)

Instructions are given for first size. Figures in parenthesis refer to larger sizes. When only one figure is given, it applies to all sizes.

**Materials:** 150 (200, 250) g of Lana Grossa **Summer Cashmere** (90% cotton, 10% cashmere; 210 m/50 g) in Cream (**col 2**) and 100 (100, 150) g in Mint (**col 12**). Size 3 and 4 mm needles; size 3 mm circular needle, 50 cm long.

**Selvage stitches:** On every row: Sl first st kwise, k last st.

**Rib patt:** K1, p1.

**St st:** K on RS, p on WS.

**Texture patt:** Work according to chart. Numbers at right edge of chart indicate RS rows, numbers at left edge of chart indicate WS rows. Work to patt rep, work 2 sts between arrows for patt rep, work to end of chart. Rep rows 1 – 6.

**Stripe patt:** Work 10 rows in Mint, 20 rows in Cream alternately throughout.

**Full-fashion increase:** On RS row: M1R, 1 st in from each edge.

**Gauge:** 25 sts and 33 rows = 10 x 10 cm in texture patt on size 4 mm needles.

**Back:** With size 3 mm needles and Cream cast on 109 (119, 129) sts. Next row (WS): Selvage st, \* p1, k1; rep from \* to last 2 sts, p1, selvage st. Work in rib patt as set by last row until piece meas 5 cm from cast-on, increasing 5 sts evenly across last WS row = 114 (124, 134) sts. Change to size 4 mm needles. Maintaining selvage sts, work in St st for 12 rows, ending with a WS row. Work in texture patt and stripe patt for 70 (74, 78) rows and piece meas 25 (26, 27) cm from end of rib patt. Shape armholes: Bind off 4 sts at beg of next 2 rows, 1 st at beg of next 8 rows = 98 (108, 118) sts. Cont in patt until a total of 42 (44, 48) rows has been worked from beg of armhole shaping and armhole meas 12.5 (13.5, 14.5) cm. Shape shoulders: At each shoulder edge bind off 2 sts at beg of next 10 rows, 3 sts at beg of next 4 rows, 4 sts at beg of next 2 rows, 6 sts at beg of next 2 rows (3 sts at beg of next 14 rows, 4 sts at beg of next 2 rows, 6 sts at beg of next 2 rows / 2 sts at beg of next 2 rows, 4 sts at beg of next 14 rows, 6 sts at beg of next 2 rows). Bind off rem 46 sts.

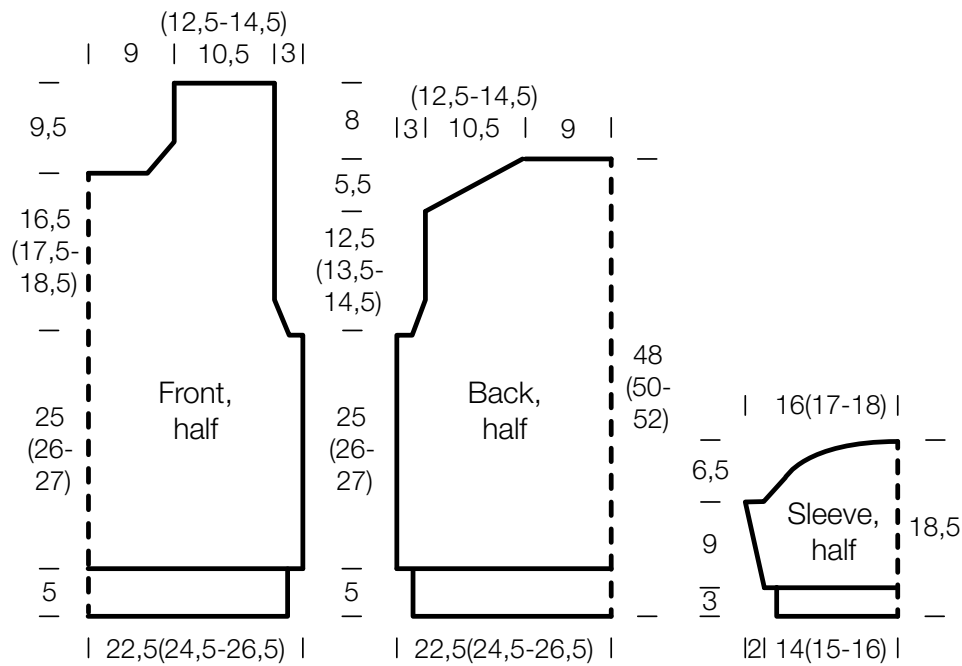
**Front:** Work same as back until a total of 54 (56, 60) rows has been worked from beg of armhole shaping and armhole meas 16.5 (17.5, 18.5) cm. Shape neck: Next row (RS): Bind off center 30 sts. Working each side separately, bind off 1 st at each neck edge 8 times and when a total of 32 rows has been worked from beg of neck shaping and neck meas 9.5 cm, bind off rem 26 (31, 36) sts for each shoulder.

**Sleeves:** With size 3 mm needles and Cream cast on 67 (73, 77) sts. Next row (WS): Selvage st, \* p1, k1; rep from \* to last 2 sts, p1, selvage st. Work in rib patt as set by last row until piece meas 3 cm from cast-on, increasing 5 sts evenly across last WS row = 72 (78, 82) sts. Change to size 4 mm needles. Maintaining selvage sts, work in St st for 2 rows, ending with a WS row. Shape sleeve: Working full-fashion inc, inc 1 st at each end of next RS row. Cont in St st for 3 more rows, ending with a WS row. Work in texture patt and stripe patt and cont sleeve shaping: Working full-fashion inc, inc 1 st at each end of 3rd row worked in texture patt, then every 6th row 3 times = 82 (88, 92) sts. Work increased sts into patt. Work even in patt for 3 rows, ending with a WS row. A total of 30 rows has been worked from end of rib patt – 6 rows in St st and 24 rows in texture patt. Shape sleeve cap: Bind off 4 sts at beg of next 2 rows, 1 st at beg of next 8 rows, 4 sts at beg of next 12 rows. Bind off rem 18 (24, 28) sts.

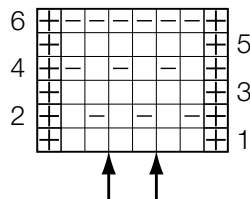
**Finishing:** Pin pieces to measurements and block. Sew shoulder seams. **Neckband:** With size 3 mm circular needle and Cream, pick up and k 108 sts evenly around neck edge. Place beg of rnd marker and join for working in rnds. Work in rib patt for 3 cm. Bind off all sts in rib. Sew in sleeves. Sew side and sleeve seams. Note: The shoulder line of this pullover is moved slightly to the back.

# PULLOVER · SUMMER CASHMERE

Design 25 – natural KNITS 01



## Chart



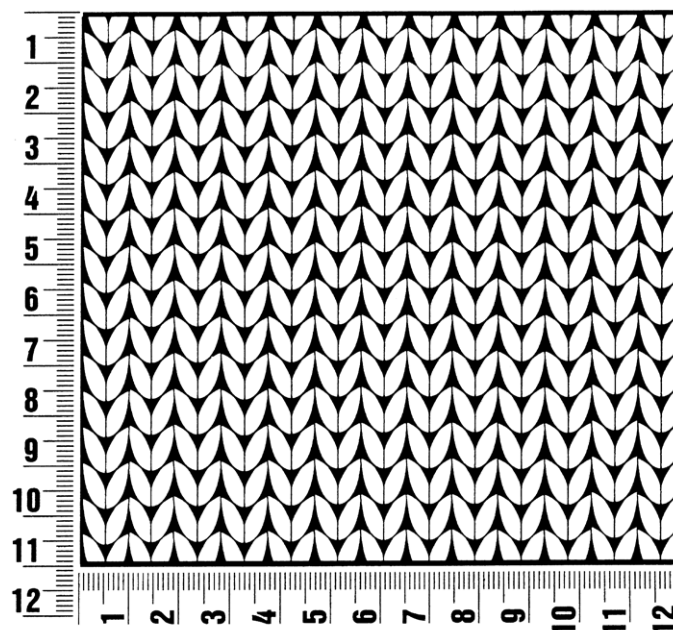
## Chart key:

- ⊕ = selvage st
- = k1
- ▢ = p1

## Gauge Swatch

### Before you begin ...

...make a gauge swatch. Use the recommended needles, yarns and pattern stitch for your gauge swatch. It should measure approx. 12 cm x 12 cm. Cast-on and bind-off rows, as well as selvage stitches should not be included in the measurement. Pin your swatch and block it as you would the finished pieces of the garment. Count stitches and rows over 10 cm. If your gauge swatch is too small, switch to larger needles. If your gauge swatch is too big, switch to smaller needles.



## Abbreviations

**beg** = begin(ning) · **ch** = chain · **cont** = continue · **dec** = decreas(e)(ing) · **inc** = increas(e)(ing) · **k** = knit · **kwise** = as if to knit  
**meas** = measures · **M1L** = lift strand between sts from front to back and knit this strand through the back loop · **M1R** = lift strand between sts from the back and knit this strand through the front loop · **patt** = pattern · **pm** = place marker · **p** = purl  
**pwise** = as if to purl · **rem** = remain(ing) · **rep** = repeat(s) · **rev St st** = reverse stockinette stitch · **rnd(s)** = round(s) · **RS** = right side · **sc** = single crochet · **skp** = slip 1 stitch as if to knit, knit 1 stitch, pass slipped stitch over knitted stitch · **sk2p** = slip 1 stitch as if to knit, knit 2 together, pass slipped stitch over knitted stitch · **s2kp** = slip 2 stitches as if to knit, k 1 stitch, pass slipped stitches over knitted stitch · **sl** = slip · **st(s)** = stitch(es) · **St st** = stockinette stitch · **tbl** = through the back loop · **tog** = together · **wyib** = with yarn in back of work · **wyif** = with yarn in front of work · **WS** = wrong side · **yo(s)** = yarn over(s)

### Publisher's Info

**Publisher:** Lana Grossa GmbH, Gaimersheim, [www.lana-grossa.com](http://www.lana-grossa.com)

**Photographer:** Theresa Rudzki, [www.theresarudzki.com](http://www.theresarudzki.com)